

**Lorna Morishita**

Executive Director of Palliser Airshed Society  
 PO Box 23121 Medicine Hat Mall  
 Medicine Hat AB T1B 4C7

**RE: Palliser Airshed Society (PAS) Ambient Air Monitoring Report – February 2026**

---

Enclosed is the PAS Dashboard Report for the month of **February 2026**.

**Continuous Monitoring – Crescent Heights, Brooks – Meadowplace, Hanna and Raymond Airpointer Monitoring Stations**

Included in this report are: Monthly Air Monitoring Summary Table, Station Issue Summary, Station Summary Graphs and Station Wind Roses.

**Continuous Monitoring Instrumentation Uptime Summary:**

There were no operational times less than 90% in February.

**AAAQO/G Exceedance Summary:**

There was one exceedance of the 1-hour AAAQG for PM<sub>2.5</sub> (80 µg/m<sup>3</sup>) in February.

Station Name	Date	Start Time	End Time	1-Hour PM <sub>2.5</sub> Concentration	Wind Direction	Wind Speed	Reference Number
		(MST)	(MST)	(µg/m <sup>3</sup> )		(km/h)	
Hanna (Airpointer)	20-Feb-26	22:00	23:00	101	ESE	Calm	451092

If you have any questions, please contact the WSP office at 403-519-8480.

**X** *Patrick Andersen*

Patrick Andersen, B.Sc.  
 WSP AQM Data Specialist

**X** 

Lenin Flores  
 Project Manager

# February 2026 Monthly Ambient Air Quality Summary

Feb-26				Palliser Airshed Society				Maximum Recorded Values								
Pollutant (units)	Objectives			Station	Monthly Average	1-Hour Minimum	Exceedence			1-hr		24-hr / 8-hr		Operational Time (%)	Calibration Date	
	1-hr	24-hr	30-day				1-hr	24-hr	30-day	Conc	Day	Conc	Day			
SO <sub>2</sub> (ppb)	172	48	8	Crescent Heights	0.1	0.0	0	0	0	5.6	Feb-14 19:00	0.3	Feb-14	99.4	Feb-04	
NO (ppb)					3.3	0.0					69.5	Feb-22 22:00	14.5	Feb-22	99.4	Feb-03
NO <sub>2</sub> (ppb)	159				7.9	0.9	0				41.0	Feb-22 22:00	21.8	Feb-22	99.4	Feb-03
NO <sub>x</sub> (ppb)					11.2	0.9					110.6	Feb-22 22:00	36.3	Feb-22	99.4	Feb-03
O <sub>3</sub> (ppb)	76				24.9	0.2	0				49.4	Feb-27 02:00	39.8	Feb-26	99.4	Feb-04
CO (ppm)					0.2	0.1					0.4	Feb-06 10:00	0.2	Feb-22	99.0	Feb-04
CO 8-Hour (ppm)	5				-	0.2	0				0.2	Feb-23 03:00	-	-	98.1	-
THC (ppm)					2.3	1.7					3.2	Feb-22 22:00	2.7	Feb-21	98.8	Feb-04
PM <sub>2.5</sub> (µg/m <sup>3</sup> )	80	29			4.9	0.6	0	0			27.4	Feb-05 20:00	9.9	Feb-22	99.4	Feb-04
ET (°C)					-2.0	-25.1					17.8	Feb-04 17:00	10.8	Feb-04	99.4	-
RH (%)					63.8	19.0					100.0	Feb-02 04:00	89.6	Feb-27	99.4	-
GSR (W/m <sup>2</sup> )					93.7	0.0					543.7	Feb-21 13:00	141.7	Feb-24	99.4	-
WSPD (km/h)					4.1	0.4					35.9	Feb-26 13:00	22.5	Feb-26	99.4	25/09/25
WDIR					W										99.4	

Pollutant (units)	Analyzer		Notes
	Make	Model	
SO <sub>2</sub>	TEI	43i-TLE	Logger offline for 4 hours for updates February 12.
NO/NO <sub>2</sub> /NO <sub>x</sub>	TEI	42i	
O <sub>3</sub>	TECO	49i	Analyzer maintenance performed February 3, allowed to stabilize and calibrated February 4.
CO	TEI	48i-TLE	Analyzer offline for 3 hours during February 3 calibration visit.
THC	TECO	51C-LT	Analyzer offline for 4 hours during February 3 calibration visit.
PM <sub>2.5</sub>	API	T640	
ET/RH	RMYoung	41382VC	
GSR	Pyranometer	PY45774	
WS/WD	RMYoung	5305	

Feb-26				Palliser Airshed Society				Maximum Recorded Values								
Pollutant (units)	Objectives			Station	Monthly Average	1-Hour Minimum	Exceedence			1-hr		24-hr / 8-hr		Operational Time (%)	Calibration Date	
	1-hr	24-hr	30-day				1-hr	24-hr	30-day	Conc	Day	Conc	Day			
NO (ppb)				Brooks Meadowplace	1.2	0.0				37.4	Feb-21 10:00	9.8	Feb-21	99.9	Feb-19	
NO <sub>2</sub> (ppb)	159				5.5	0.4	0				30.1	Feb-21 02:00	17.3	Feb-21	99.9	Feb-19
NO <sub>x</sub> (ppb)					6.6	0.3					62.5	Feb-21 10:00	27.1	Feb-21	99.9	Feb-19
O <sub>3</sub> (ppb)	76				24.5	0.0	0				46.2	Feb-07 15:00	39.7	Feb-26	99.9	Feb-20
PM <sub>2.5</sub> (µg/m <sup>3</sup> )	80	29			5.8	0.3	0	0			48.8	Feb-21 07:00	18.1	Feb-21	99.7	Feb-19
ET (°C)					-4.4	-27.6					17.8	Feb-04 15:00	8.1	Feb-07	99.9	-
RH (%)					71.0	21.6					100.0	Feb-02 00:00	89.1	Feb-01	99.9	-
WSPD (km/h)					3.0	0.1					41.7	Feb-17 12:00	30.0	Feb-17	99.9	19/08/25
WDIR					WNW										99.9	

Pollutant (units)	Analyzer		Notes
	Make	Model	
NO/NO <sub>2</sub> /NO <sub>x</sub>	TEI	42iQ	Logger offline for 1 hour for updates February 12.
O <sub>3</sub>	TEI	49iQ	
PM <sub>2.5</sub>	API	T640	Analyzer offline for 1 hour during February 20 calibration visit.
ET/RH	CS	HC2-S3	
WS/WD	RMYoung	5305	

Feb-26				Palliser Airshed Society				Maximum Recorded Values							
Pollutant (units)	Objectives			Station	Monthly Average	1-Hour Minimum	Exceedence			1-hr		24-hr / 8-hr		Operational Time (%)	Calibration Date
	1-hr	24-hr	30-day				1-hr	24-hr	30-day	Conc	Day	Conc	Day		
NO (ppb)				Hanna Airpointer	2.8	0.0				20.5	Feb-25 09:00	5.1	Feb-27	99.3	Feb-26
NO <sub>2</sub> (ppb)	159				6.4	1.1	0			33.7	Feb-25 08:00	14.3	Feb-21	99.3	Feb-26
NO <sub>x</sub> (ppb)					9.2	1.3				45.9	Feb-25 09:00	19.1	Feb-21	99.3	Feb-26
O <sub>3</sub> (ppb)	76				26.8	0.4	0			48.1	Feb-26 23:00	32.2	Feb-25	99.0	Feb-27
PM <sub>2.5</sub> (µg/m <sup>3</sup> )	80	29			4.1	0.0	1	0		100.5	Feb-20 23:00	10.0	Feb-24	100.0	Feb-27
ET (°C)					-5.7	-25.9				11.1	Feb-07 14:00	4.8	Feb-05	100.0	-
RH (%)					73.4	30.0				96.5	Feb-01 14:00	95.1	Feb-01	100.0	-
WSPD (km/h)					0.1	0.0				14.8	Feb-26 10:00	9.0	Feb-26	100.0	26/09/25
WDIR					NW									100.0	

Pollutant (units)	Analyzer			Notes
	Make		Model	
NO/NO <sub>2</sub> /NO <sub>x</sub>	Airpointer API		200e	Analyzer offline during February 27 O3 calibration.
O <sub>3</sub>	Airpointer API		400e	Analyzer offline during February 26 NOx calibration.
PM <sub>2.5</sub>	Sharp		5030	
ET/RH	CS		HC2-S3	
WS/WD	RMYoung		5305	

Feb-26				Palliser Airshed Society				Maximum Recorded Values							
Pollutant (units)	Objectives			Station	Monthly Average	1-Hour Minimum	Exceedence			1-hr		24-hr / 8-hr		Operational Time (%)	Calibration Date
	1-hr	24-hr	30-day				1-hr	24-hr	30-day	Conc	Day	Conc	Day		
NO (ppb)				Raymond Airpointer	0.7	0.0				9.6	Feb-06 21:00	1.6	Feb-22	98.5	Feb-05
NO <sub>2</sub> (ppb)	159				1.5	0.0	0			10.9	Feb-22 20:00	5.2	Feb-22	98.5	Feb-05
NO <sub>x</sub> (ppb)					2.1	0.0				14.5	Feb-21 10:00	6.7	Feb-22	98.5	Feb-05
O <sub>3</sub> (ppb)	76				35.2	8.7	0			49.7	Feb-07 14:00	43.7	Feb-26	98.8	Feb-06
PM <sub>2.5</sub> (µg/m <sup>3</sup> )	80	29			3.8	0.0	0	0		31.0	Feb-21 14:00	14.8	Feb-22	99.9	Feb-06
ET (°C)					-1.5	-29.2				20.2	Feb-06 14:00	12.1	Feb-04	99.9	-
RH (%)					58.1	11.0				100.0	Feb-17 05:00	88.6	Feb-17	99.9	-
WSPD (km/h)					8.8	0.4				36.3	Feb-26 14:00	24.2	Feb-25	99.9	-
WDIR					WSW									99.9	-

Pollutant (units)	Analyzer			Notes
	Make		Model	
NO/NO <sub>2</sub> /NO <sub>x</sub>	Airpointer API		200e	Power outage February 12.
O <sub>3</sub>	Airpointer API		400e	Analyzer offline during February 6 O3 calibration. Span system maintenance February 8. Manual span check February 20.
PM <sub>2.5</sub>	Sharp		5030	
ET/RH	Vaisala		WXT520	
WS/WD	Vaisala		WXT520	

# February 2026 NO<sub>2</sub>

NO<sub>2</sub> AAAQO = 172 ppb

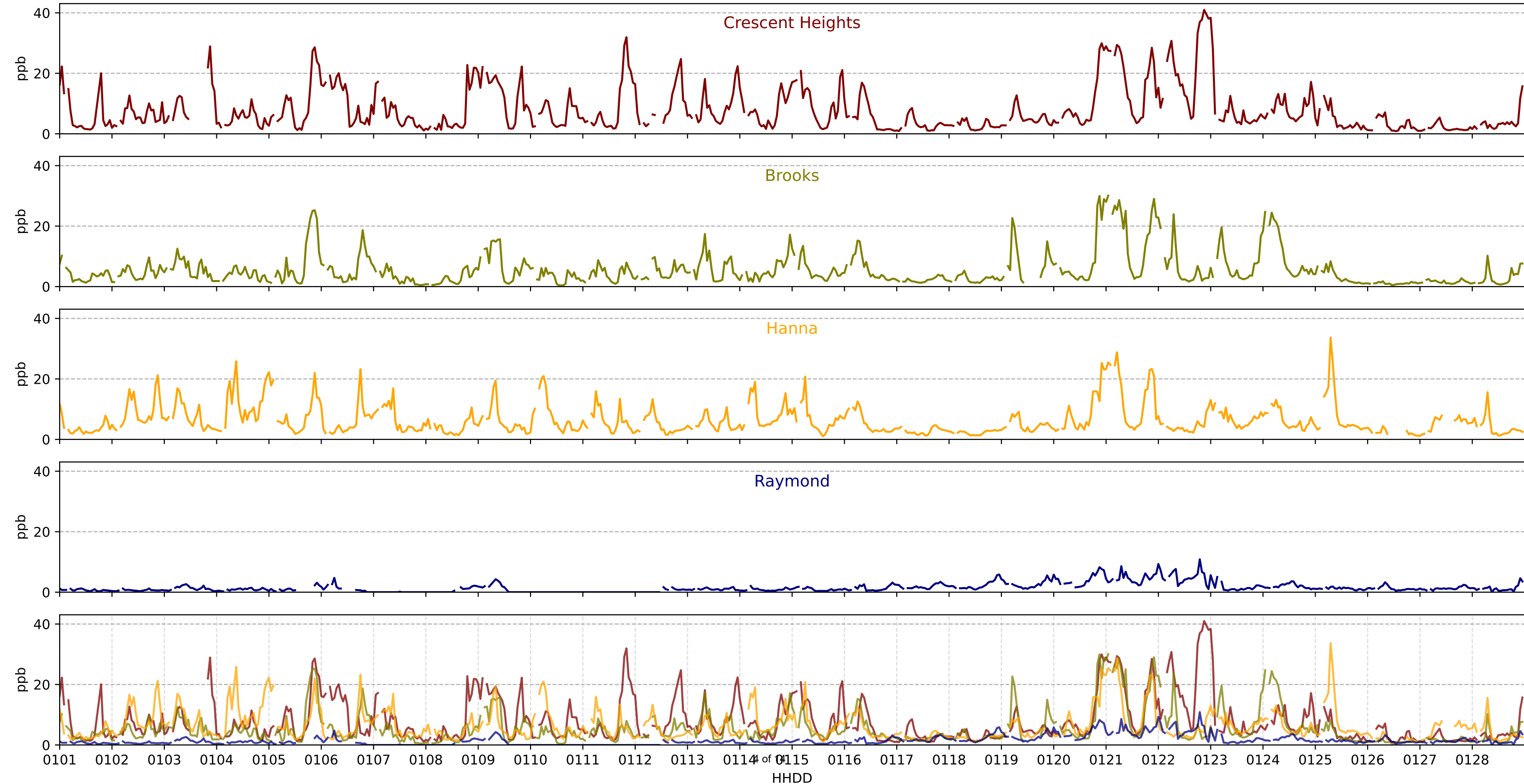
Crescent Heights

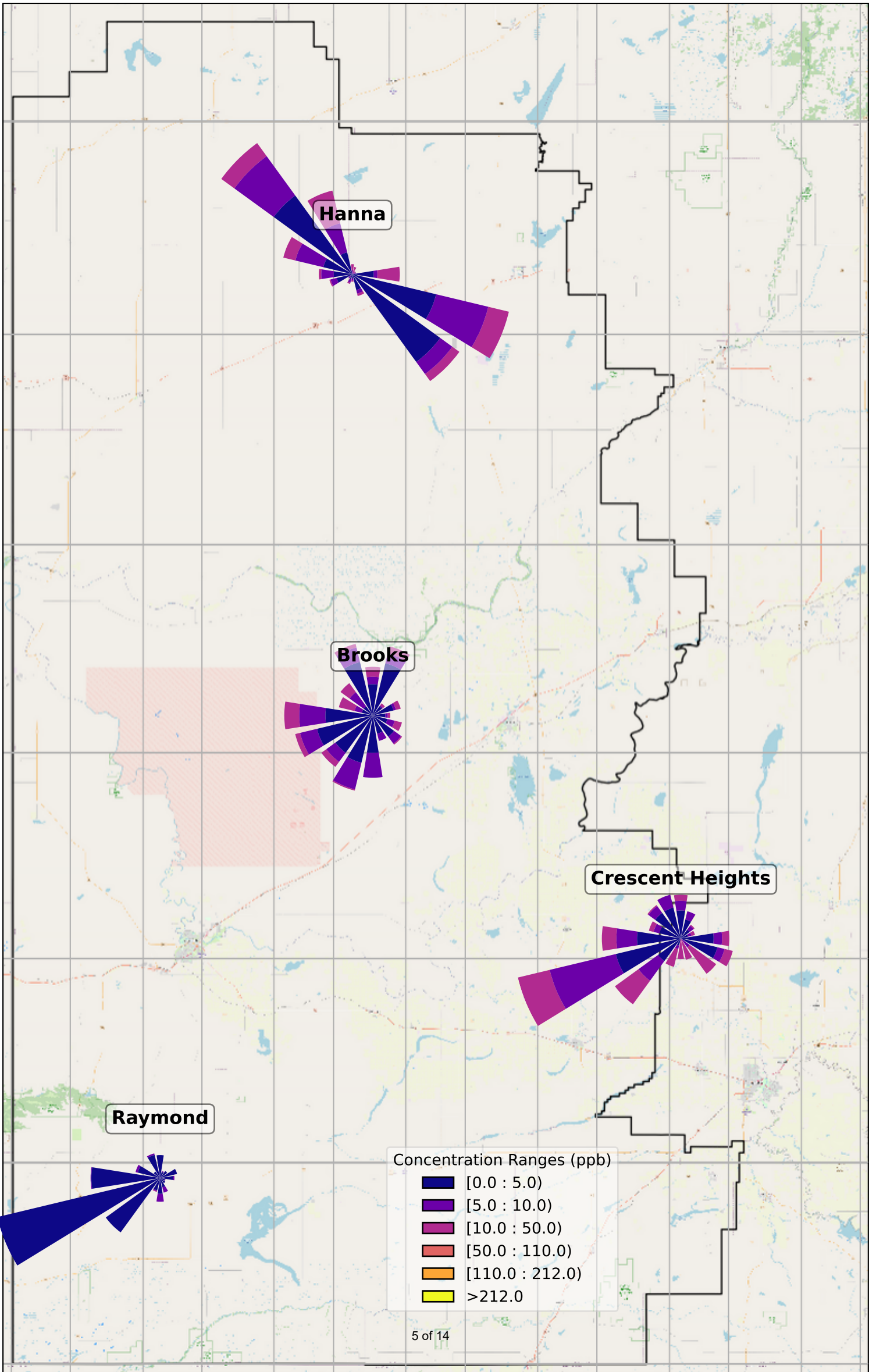
Brooks

Hanna

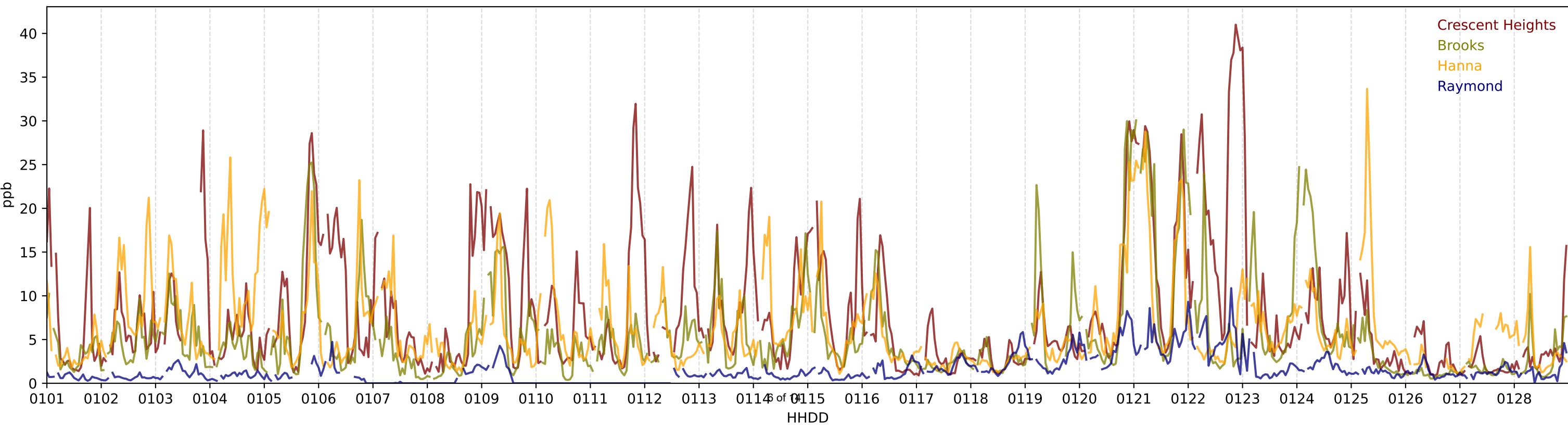
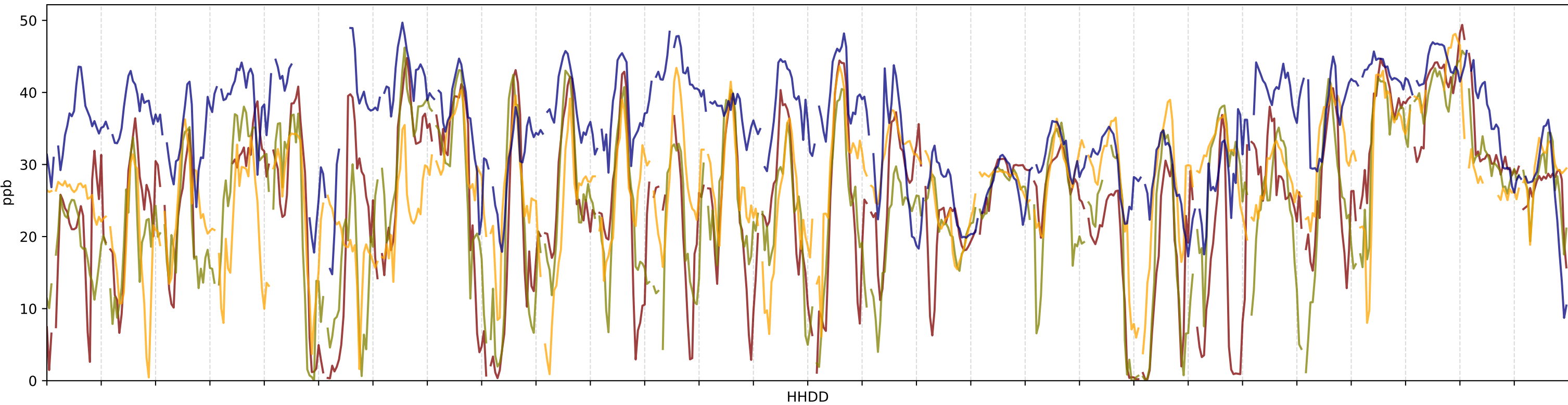
Raymond

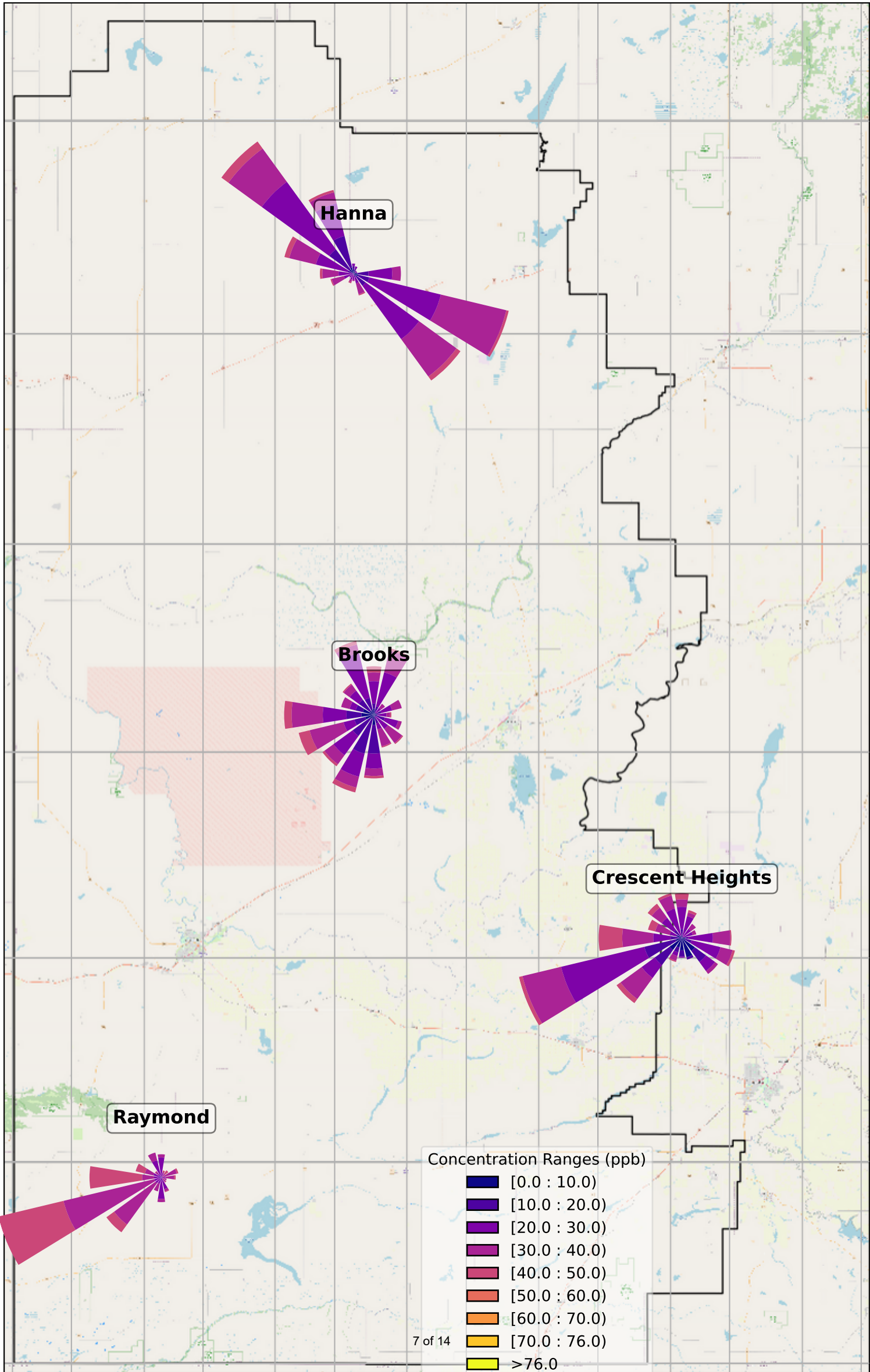
HHDD





February 2026 O<sub>3</sub> vs NO<sub>2</sub>



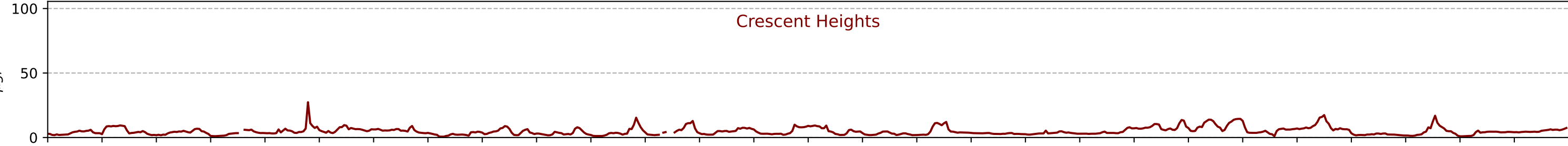


# February 2026 PM<sub>2.5</sub>

PM<sub>2.5</sub> AAAQG = 80  $\mu\text{g}/\text{m}^3$

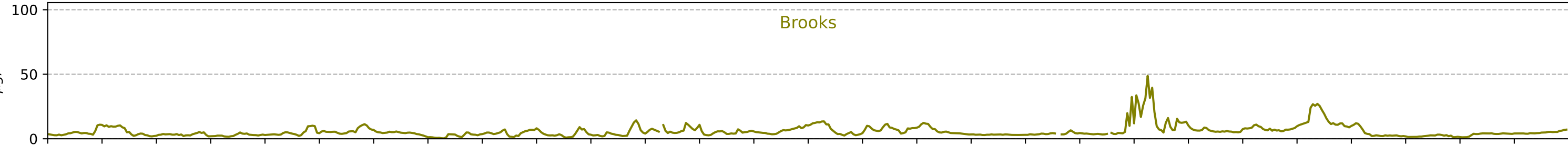
Crescent Heights

$\mu\text{g}/\text{m}^3$



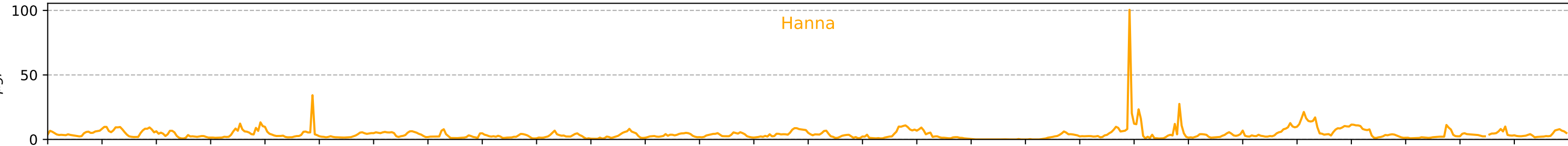
Brooks

$\mu\text{g}/\text{m}^3$



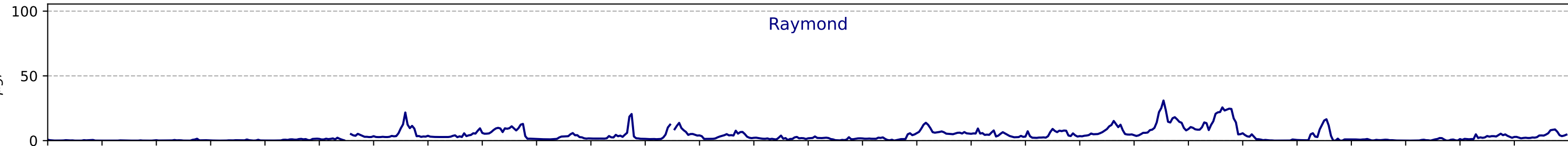
Hanna

$\mu\text{g}/\text{m}^3$



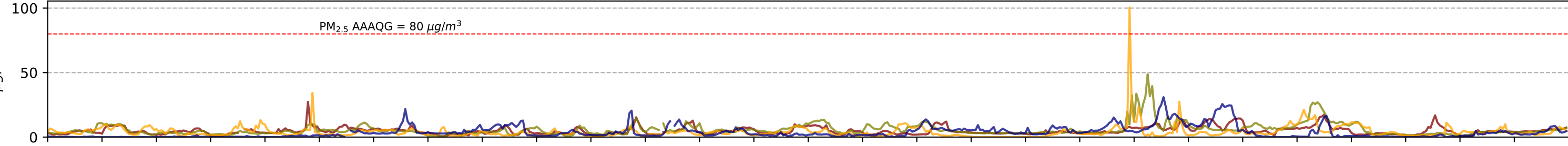
Raymond

$\mu\text{g}/\text{m}^3$

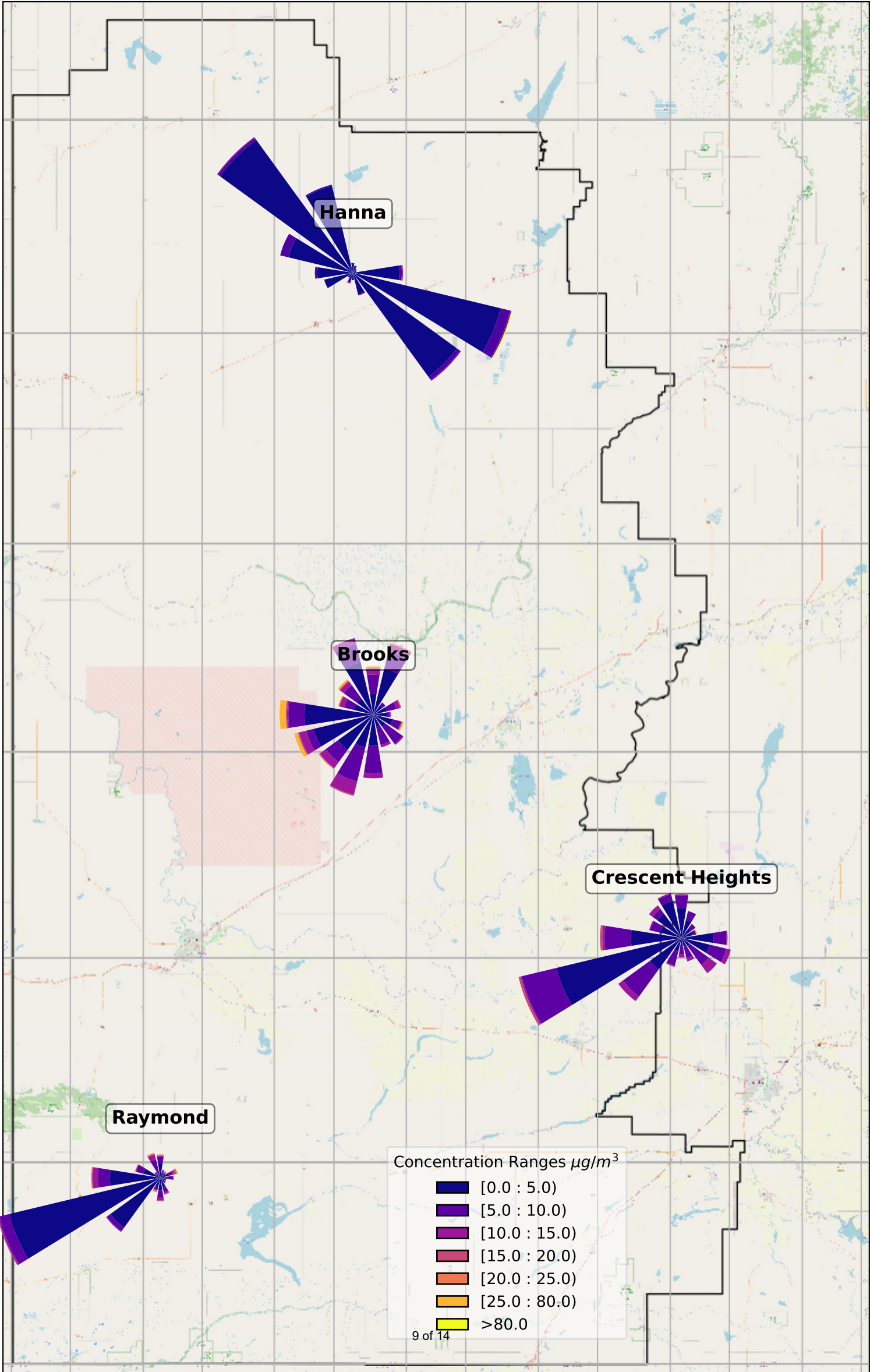


PM<sub>2.5</sub> AAAQG = 80  $\mu\text{g}/\text{m}^3$

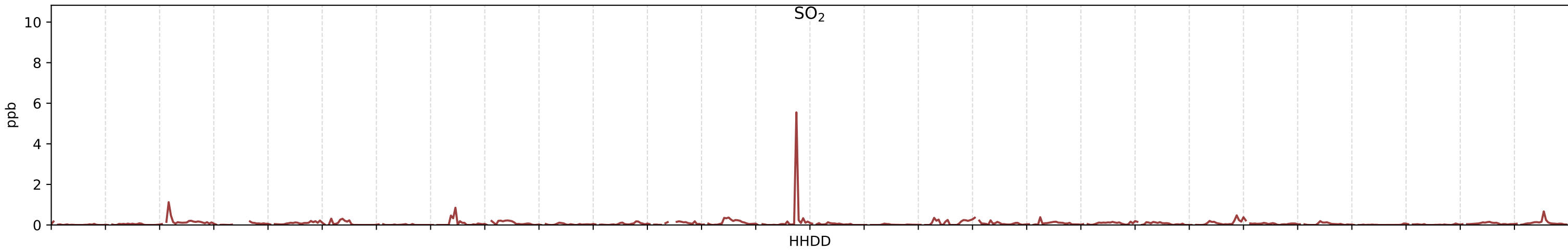
$\mu\text{g}/\text{m}^3$



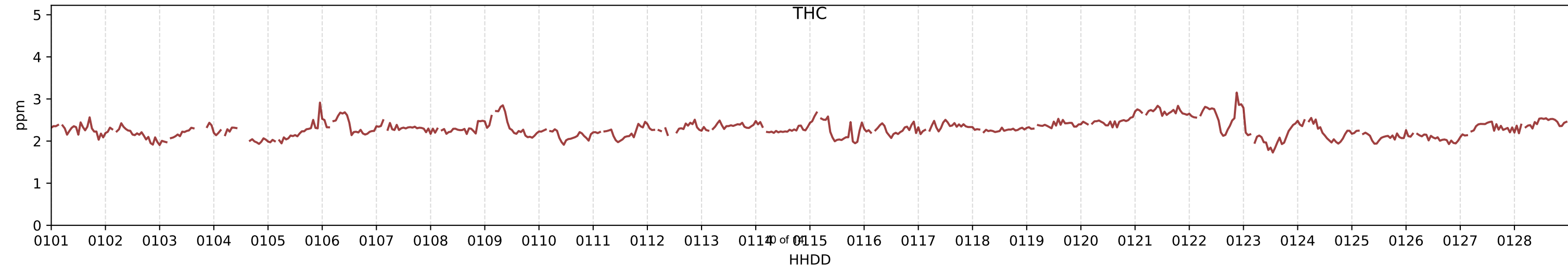
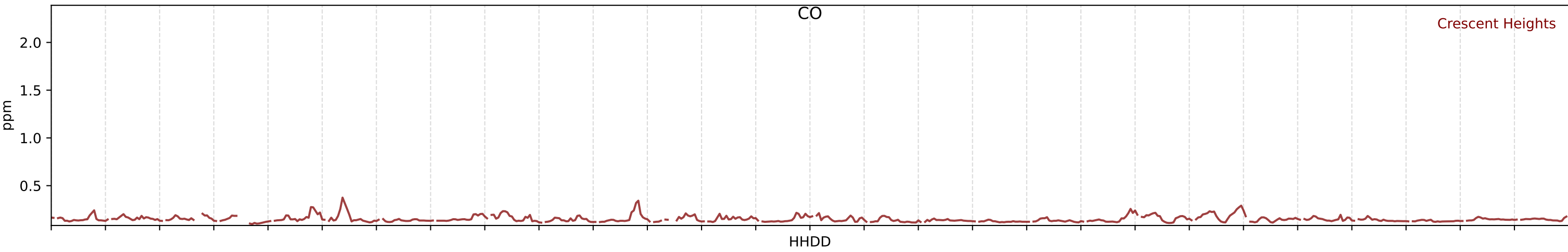
HHDD



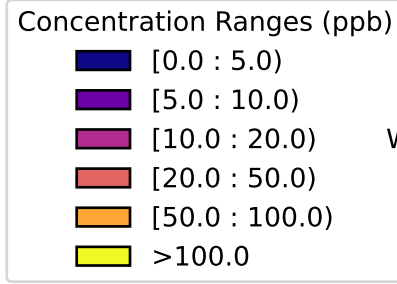
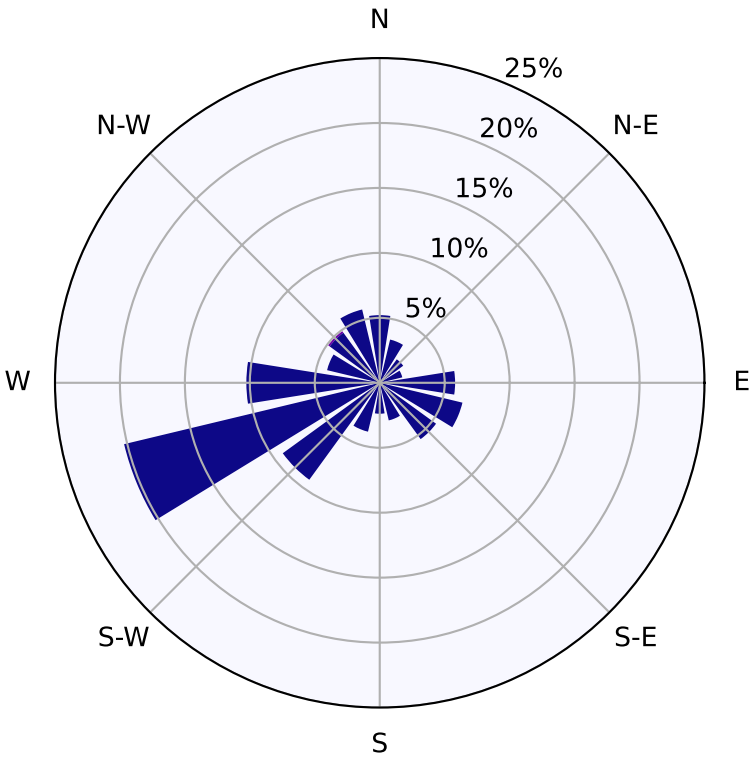
SO<sub>2</sub> AAAQO = 172 ppb



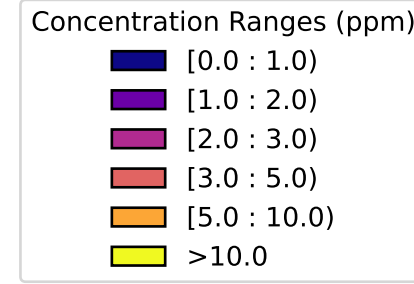
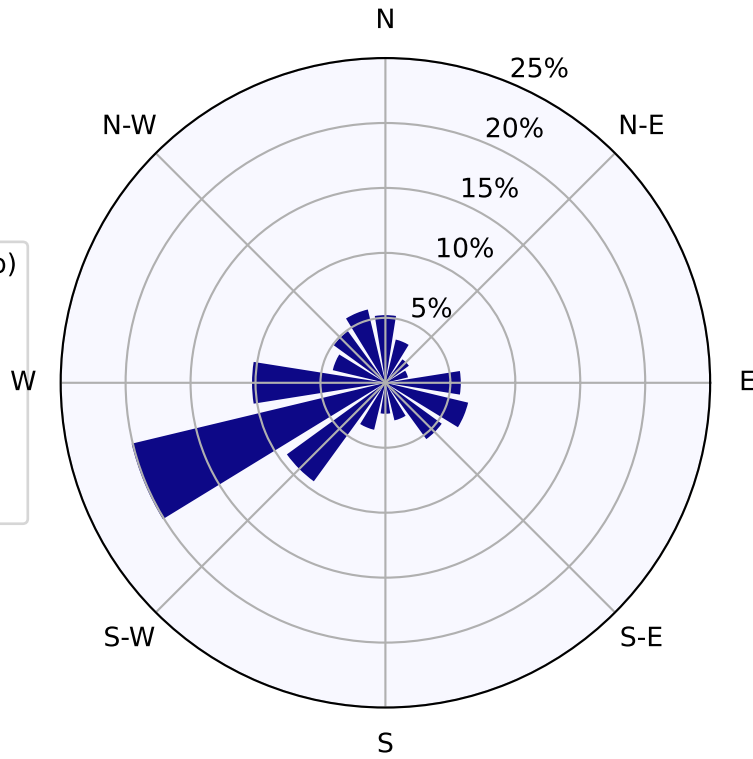
CO AAAQO = 13 ppm



Crescent Heights SO<sub>2</sub>



Crescent Heights CO



Crescent Heights THC

