

May 26, 2026

Lorna Morishita

Executive Director of Palliser Airshed Society
PO Box 23121 Medicine Hat Mall
Medicine Hat AB T1B 4C7

RE: Palliser Airshed Society (PAS) Ambient Air Monitoring Report – April 2026

Enclosed is the PAS Dashboard Report for the month of **April 2026**.

Continuous Monitoring – Crescent Heights, Brooks – Meadowplace, Hanna and Raymond Airpointer Monitoring Stations

Included in this report are: Monthly Air Monitoring Summary Table, Station Issue Summary, Station Summary Graphs and Station Wind Roses.

Continuous Monitoring Instrumentation Uptime Summary:

Due to ongoing operational issues with the NOx analyzer in the Raymond Airpointer the station was removed March 27 for delivery to the vendor for repair. Station remains offline for April. **Reference #452013.**

AAAQO/G Exceedance Summary:

There were no exceedances of the AAAQO/G in April.

If you have any questions, please contact the WSP office at 403-519-8480.

X *Patrick Andersen*

Patrick Andersen, B.Sc.
WSP AQM Data Specialist

X 

Lenin Flores
Project Manager

April 2026 Monthly Ambient Air Quality Summary

Apr-26				Palliser Airshed Society			Maximum Recorded Values									
Pollutant (units)	Objectives			Station	Monthly Average	1-Hour Minimum	Exceedence			1-hr		24-hr / 8-hr		Operational Time (%)	Calibration Date	
	1-hr	24-hr	30-day				1-hr	24-hr	30-day	Conc	Day	Conc	Day			
SO ₂ (ppb)	172	48	8	Crescent Heights	0.0	0.0	0	0	0	0.5	Apr-05 12:00	0.1	Apr-30	99.7	Apr-14	
NO (ppb)					1.1	0.0					36.9	Apr-04 05:00	3.3	Apr-11	99.9	Apr-14
NO ₂ (ppb)	159				4.0	0.1	0				35.5	Apr-29 23:00	9.4	Apr-29	99.9	Apr-14
NO _x (ppb)					5.0	0.2					56.3	Apr-04 05:00	12.4	Apr-29	99.9	Apr-14
O ₃ (ppb)	76				33.9	0.4	0				60.2	Apr-21 17:00	42.1	Apr-25	99.9	Apr-15
CO (ppm)					0.1	0.1					0.3	Apr-01 07:00	0.2	Apr-11	99.7	Apr-15
CO 8-Hour (ppm)	5				-	0.1	0				0.2	Apr-01 09:00	-	-	100.0	-
THC (ppm)					2.2	2.0					2.8	Apr-11 06:00	2.3	Apr-11	99.9	Apr-15
PM _{2.5} (µg/m ³)	80	29			4.4	0.8	0	0			23.7	Apr-06 22:00	7.5	Apr-11	99.9	Apr-15
ET (°C)					5.5	-7.8					26.8	Apr-21 16:00	18.3	Apr-21	99.9	-
RH (%)					61.2	11.7					100.0	Apr-02 06:00	96.1	Apr-02	99.9	-
GSR (W/m ²)					203.8	0.0					886.5	Apr-28 13:00	321.3	Apr-29	99.9	-
WSPD (km/h)					3.3	0.0					46.2	Apr-22 17:00	30.2	Apr-23	99.9	25/09/25
WDIR					NNW										99.9	

Pollutant (units)	Analyzer			Notes
	Make	Model		
SO ₂	TEI	43i-TLE		Logger offline for 1 hour for updates April 30.
NO/NO ₂ /NO _x	TEI	42i		Manual span check April 15.
O ₃	TECO	49i		Analyzer maintenance performed April 14, allowed to stabilize and calibrated April 15.
CO	TEI	48i-TLE		Manual span check April 14.
THC	TECO	51C-LT		
PM _{2.5}	API	T640		
ET/RH	RMYoung	41382VC		
GSR	Pyranometer	PY45774		
WSWD	RMYoung	5305		

Apr-26				Palliser Airshed Society			Maximum Recorded Values									
Pollutant (units)	Objectives			Station	Monthly Average	1-Hour Minimum	Exceedence			1-hr		24-hr / 8-hr		Operational Time (%)	Calibration Date	
	1-hr	24-hr	30-day				1-hr	24-hr	30-day	Conc	Day	Conc	Day			
NO (ppb)				Brooks Meadowplace	0.4	0.0				23.1	Apr-29 06:00	2.6	Apr-29	99.9	Apr-27	
NO ₂ (ppb)	159				2.9	0.4	0				20.0	Apr-29 06:00	6.9	Apr-29	99.9	Apr-27
NO _x (ppb)					3.2	0.1					43.2	Apr-29 06:00	9.5	Apr-29	99.9	Apr-27
O ₃ (ppb)	76				34.5	0.9	0				59.8	Apr-17 16:00	45.1	Apr-25	99.7	Apr-27
PM _{2.5} (µg/m ³)	80	29			5.1	0.4	0	0			16.6	Apr-11 22:00	8.1	Apr-12	96.9	Apr-28
ET (°C)					4.1	-14.9					24.7	Apr-20 17:00	16.5	Apr-21	99.9	-
RH (%)					69.0	18.7					100.0	Apr-02 09:00	97.2	Apr-02	99.9	-
WSPD (km/h)					4.3	0.1					45.6	Apr-22 15:00	36.1	Apr-23	99.9	19/08/25
WDIR					N										99.9	

Pollutant (units)	Analyzer			Notes
	Make	Model		
NO/NO ₂ /NO _x	TEI	42iQ		Logger offline for 1 hour for updates April 30.
O ₃	TEI	49iQ		Manual span check April 9.
PM _{2.5}	API	T640		Analyzer replacement for service on April 27 aborted due to faulty replacement analyzer. Original analyzer placed back into service April 28.
ET/RH	CS	HC2-S3		
WSWD	RMYoung	5305		

Apr-26				Palliser Airshed Society				Maximum Recorded Values							
Pollutant (units)	Objectives			Station	Monthly Average	1-Hour Minimum	Exceedence			1-hr		24-hr / 8-hr		Operational Time (%)	Calibration Date
	1-hr	24-hr	30-day				1-hr	24-hr	30-day	Conc	Day	Conc	Day		
NO (ppb)				Hanna Airpointer	1.3	0.0				11.1	Apr-01 07:00	3.7	Apr-02	99.4	Apr-14
NO ₂ (ppb)	159				3.2	0.5	0			23.9	Apr-17 00:00	6.0	Apr-16	99.4	Apr-14
NO _x (ppb)					4.5	1.0				28.1	Apr-30 06:00	8.9	Apr-16	99.4	Apr-14
O ₃ (ppb)	76				33.9	4.6	0			56.9	Apr-30 18:00	42.3	Apr-18	99.0	Apr-15
PM _{2.5} (µg/m ³)	80	29			3.8	0.0	0	0		15.6	Apr-18 22:00	7.0	Apr-14	100.0	Apr-15
ET (°C)					2.4	-12.9				22.7	Apr-21 16:00	14.8	Apr-21	100.0	-
RH (%)					68.6	18.8				97.4	Apr-15 08:00	93.0	Apr-24	100.0	-
WSPD (km/h)					0.5	0.0				20.0	Apr-06 18:00	14.5	Apr-06	100.0	26/09/25
WDIR					NNE									100.0	

Pollutant (units)	Analyzer			Notes
	Make		Model	
NO/NO ₂ /NO _x	Airpointer API		200e	Analyzer offline during April 15 O ₃ calibration.
O ₃	Airpointer API		400e	Analyzer offline during April 14 NO _x calibration.
PM _{2.5}	Sharp		5030	
ET/RH	CS		HC2-S3	
WS/WD	RMyoung		5305	

April 2026 NO₂

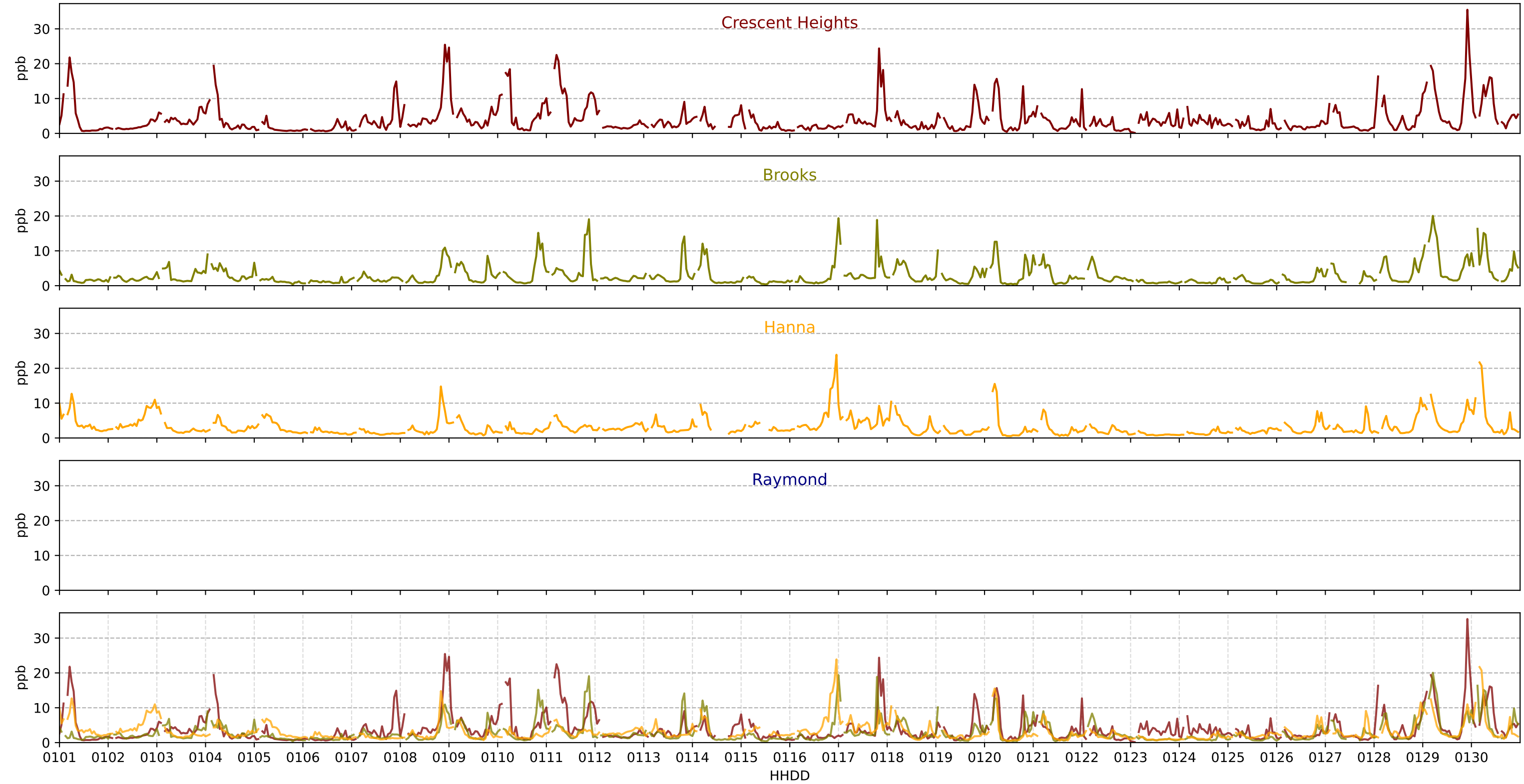
NO₂ AAAQO = 172 pbb

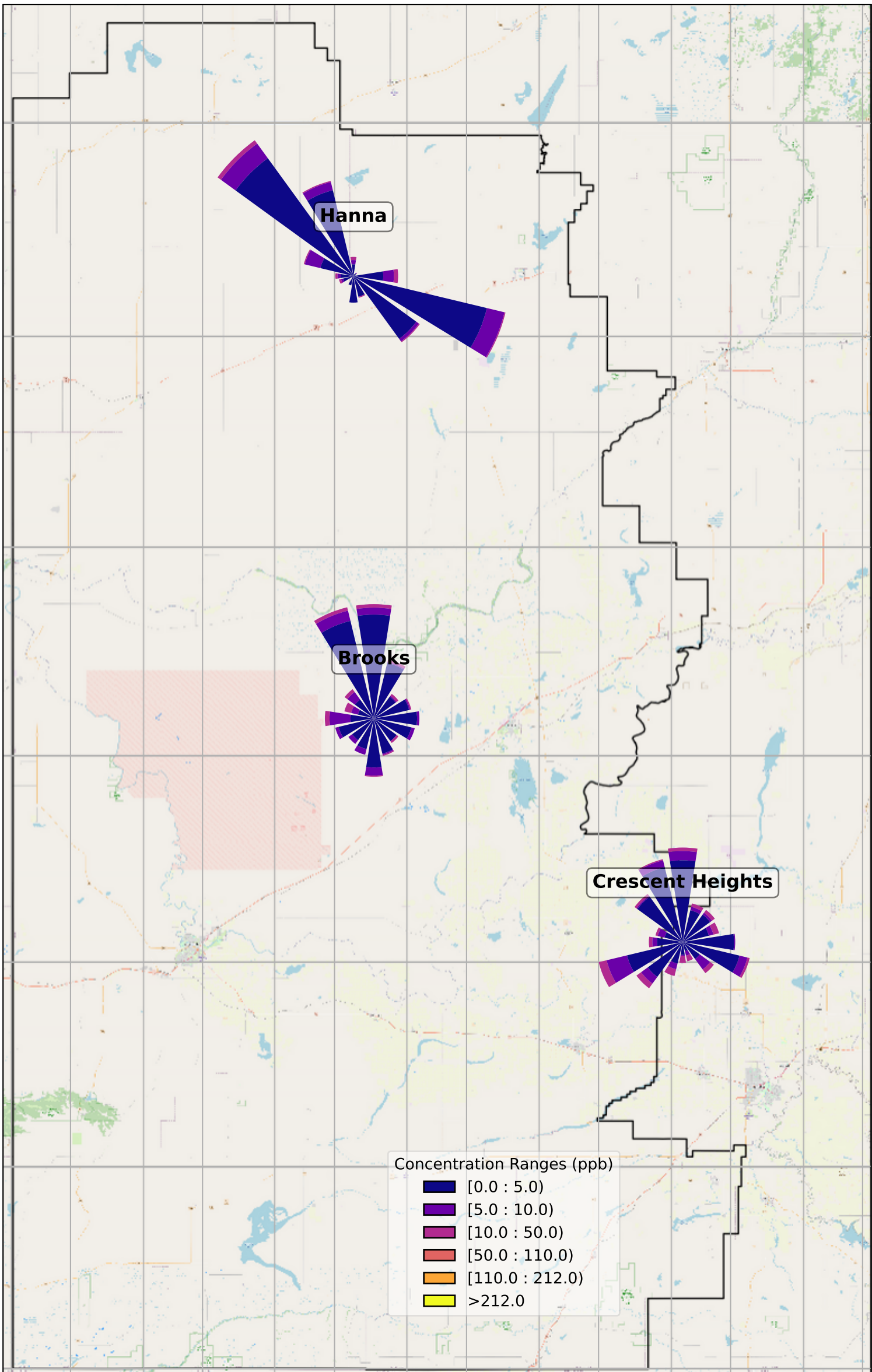
Crescent Heights

Brooks

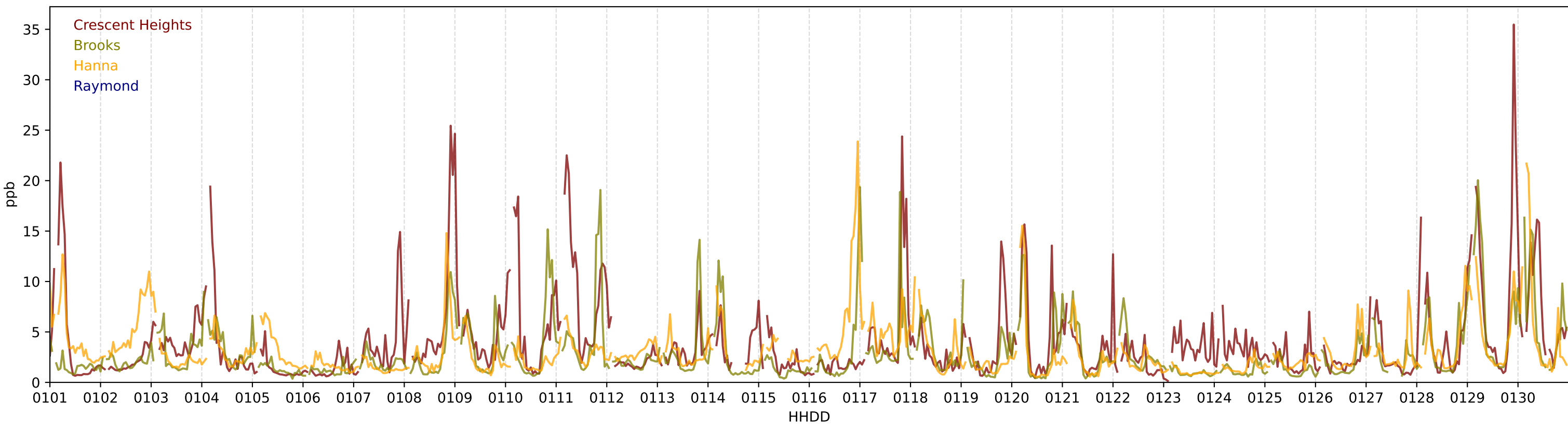
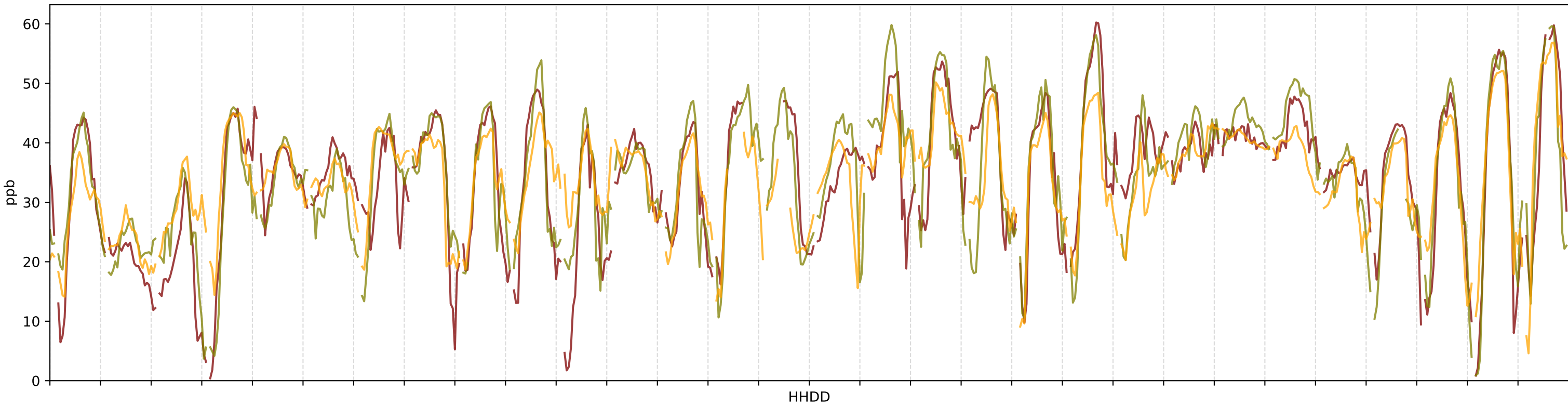
Hanna

Raymond

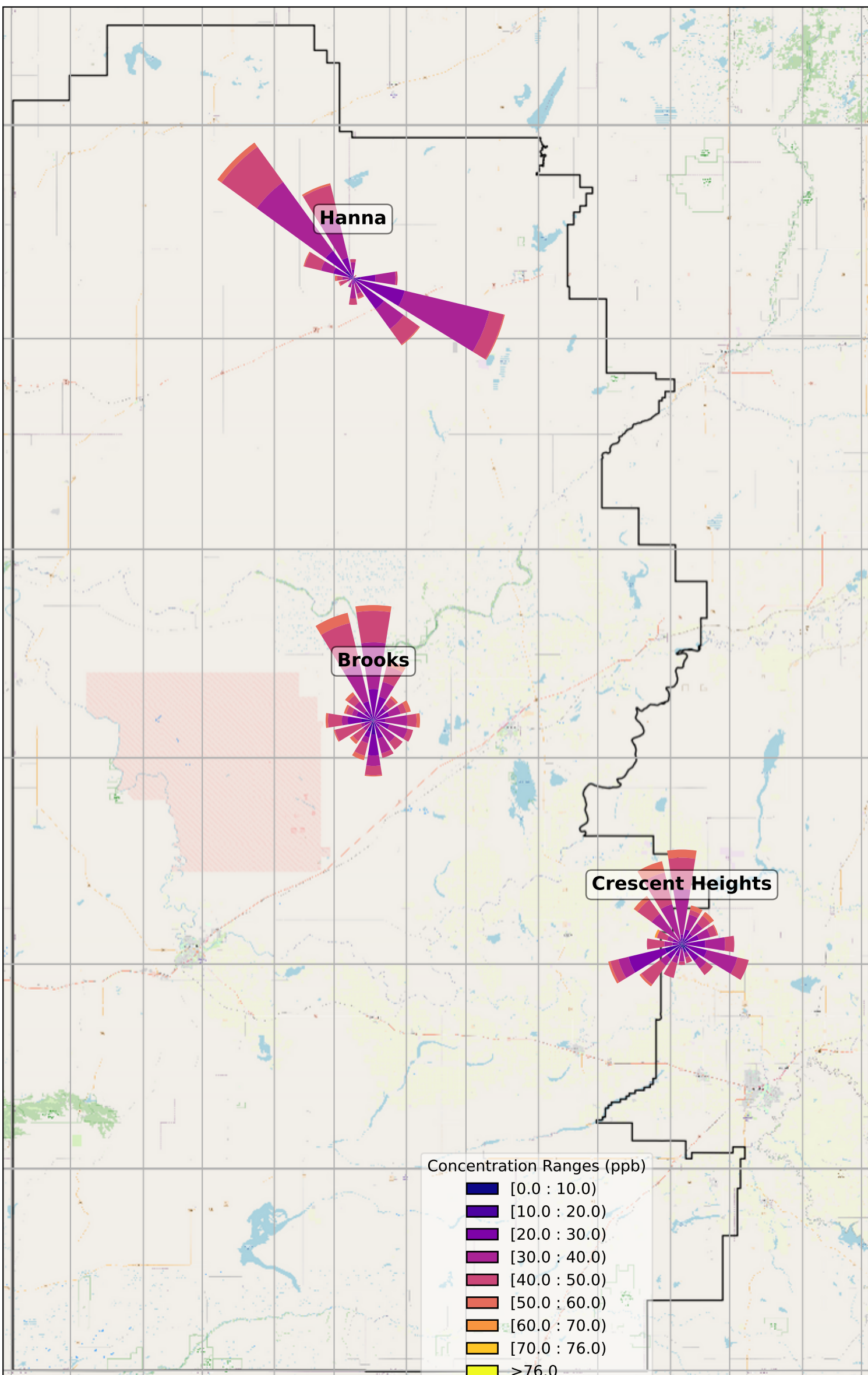




April 2026 O₃ vs NO₂



April 2026 O₃ Roses



Hanna

Brooks

Crescent Heights

Concentration Ranges (ppb)

- [0.0 : 10.0)
- [10.0 : 20.0)
- [20.0 : 30.0)
- [30.0 : 40.0)
- [40.0 : 50.0)
- [50.0 : 60.0)
- [60.0 : 70.0)
- [70.0 : 76.0)
- >76.0

April 2026 PM_{2.5}

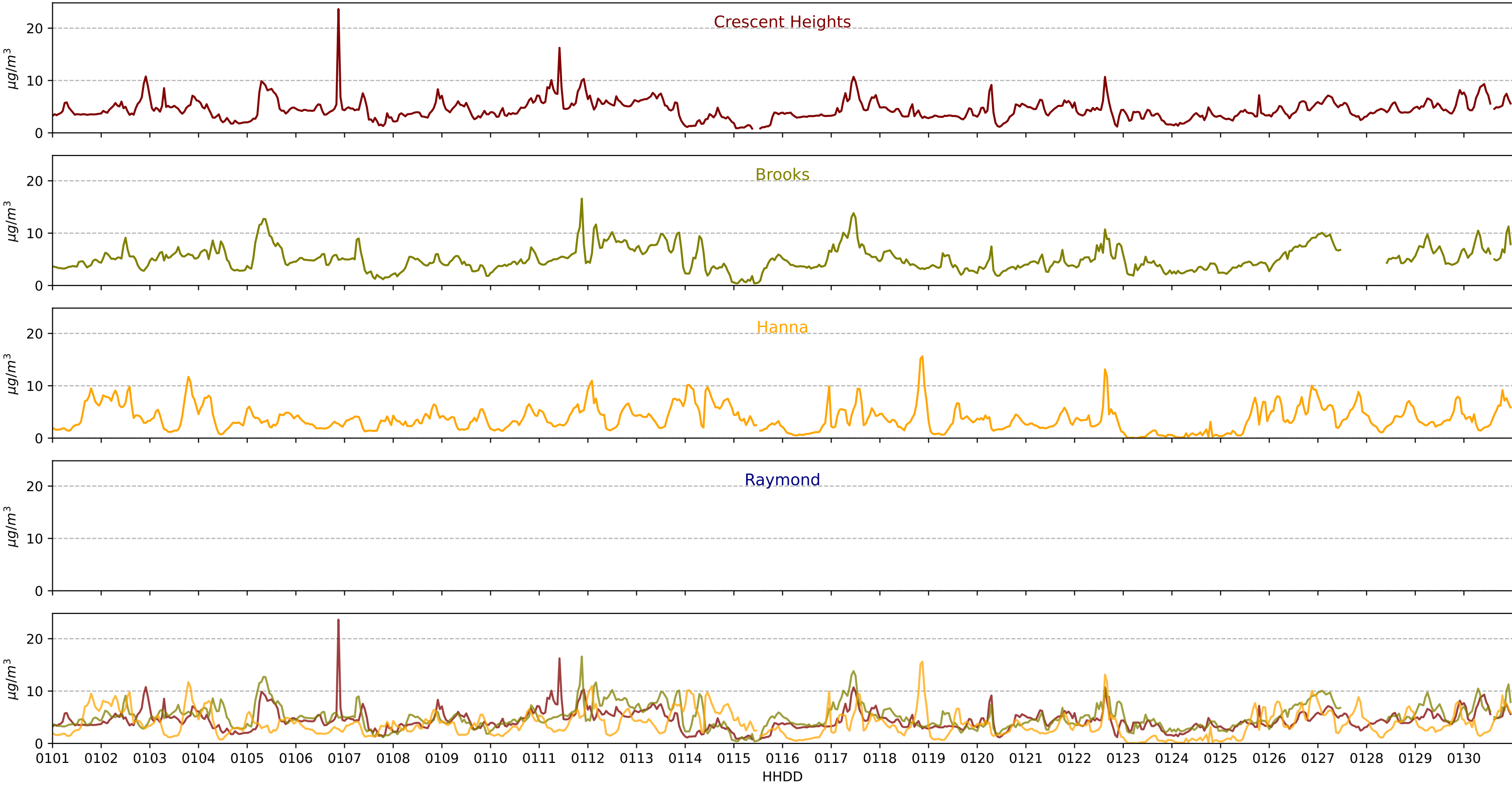
PM_{2.5} AAAQG = 80 $\mu\text{g}/\text{m}^3$

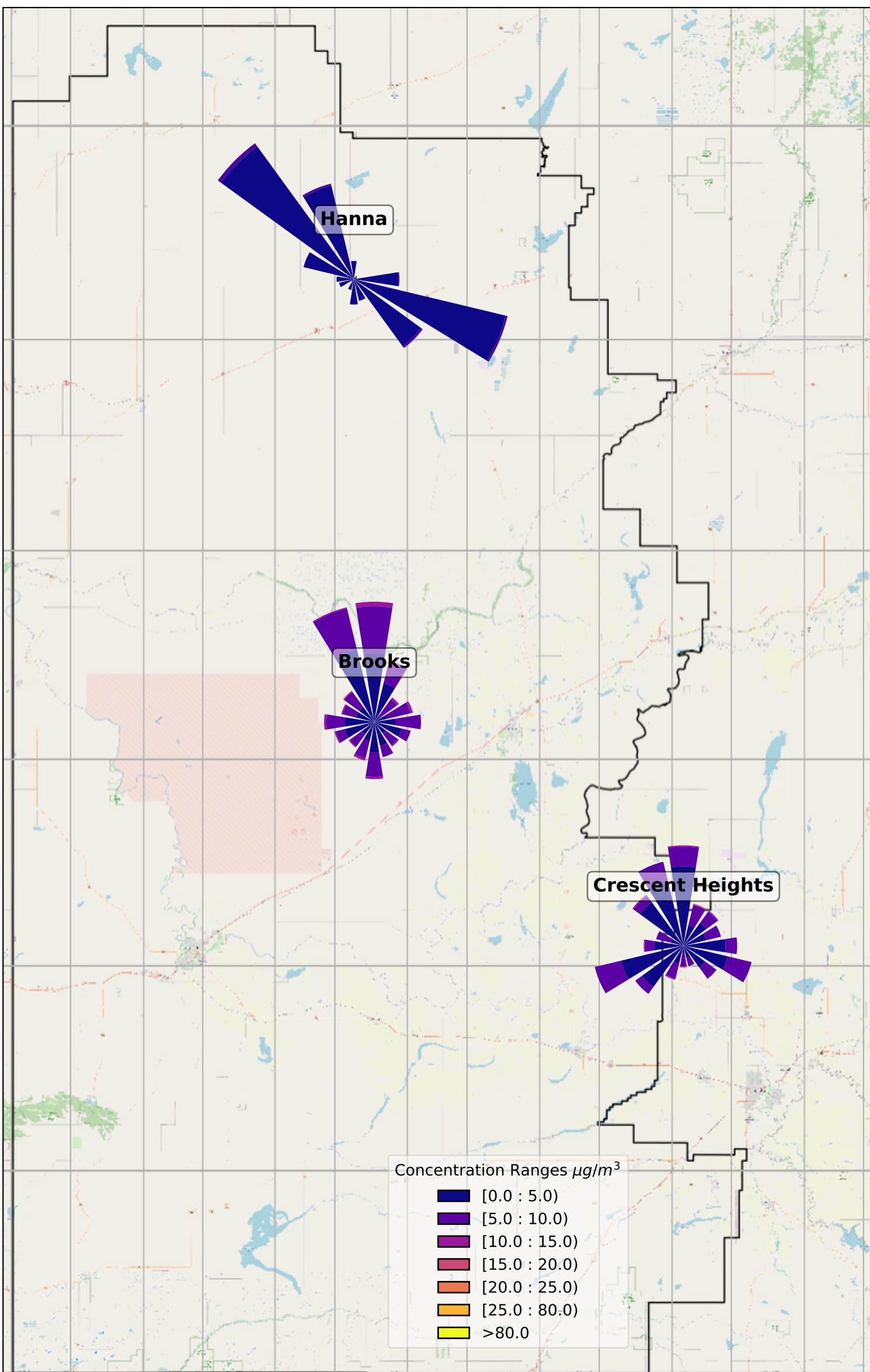
Crescent Heights

Brooks

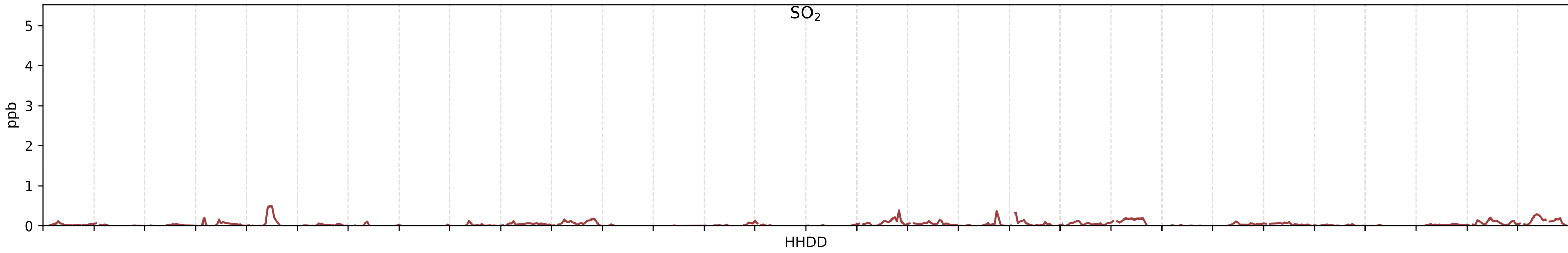
Hanna

Raymond

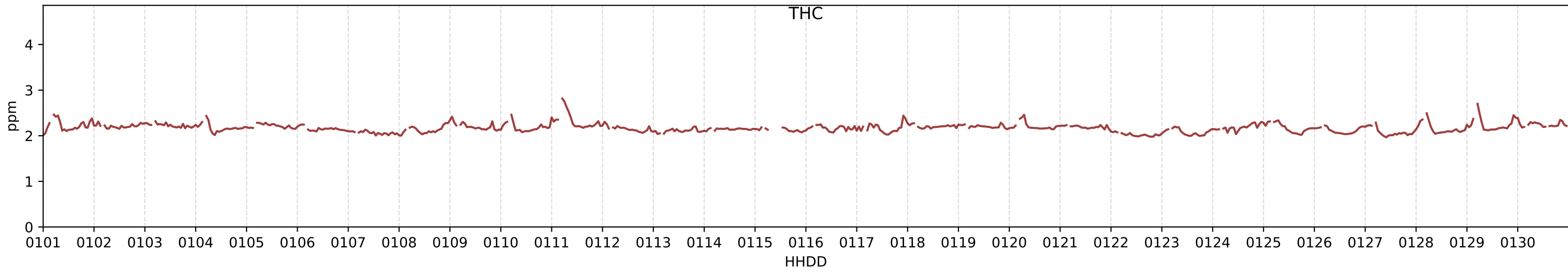
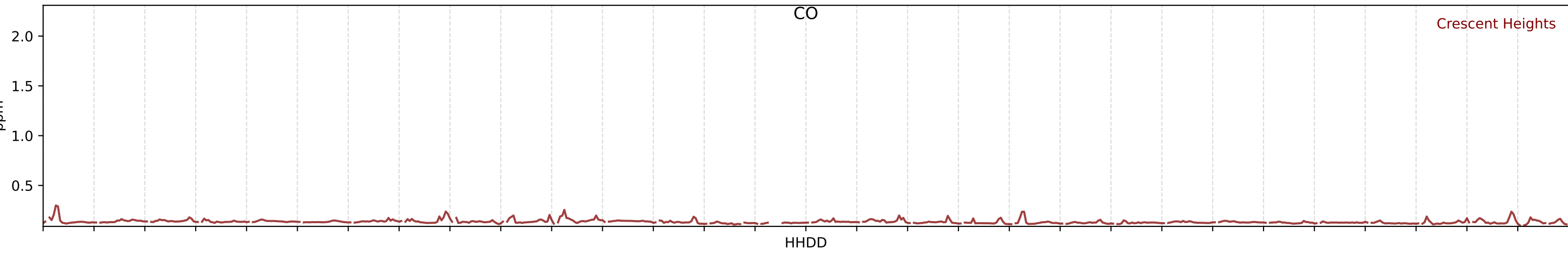




SO₂ AAAQO = 172 ppb

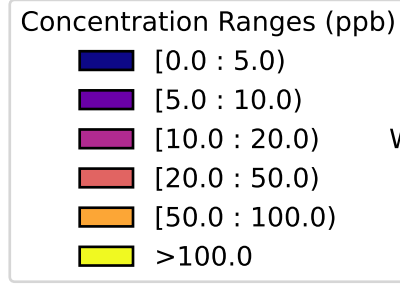
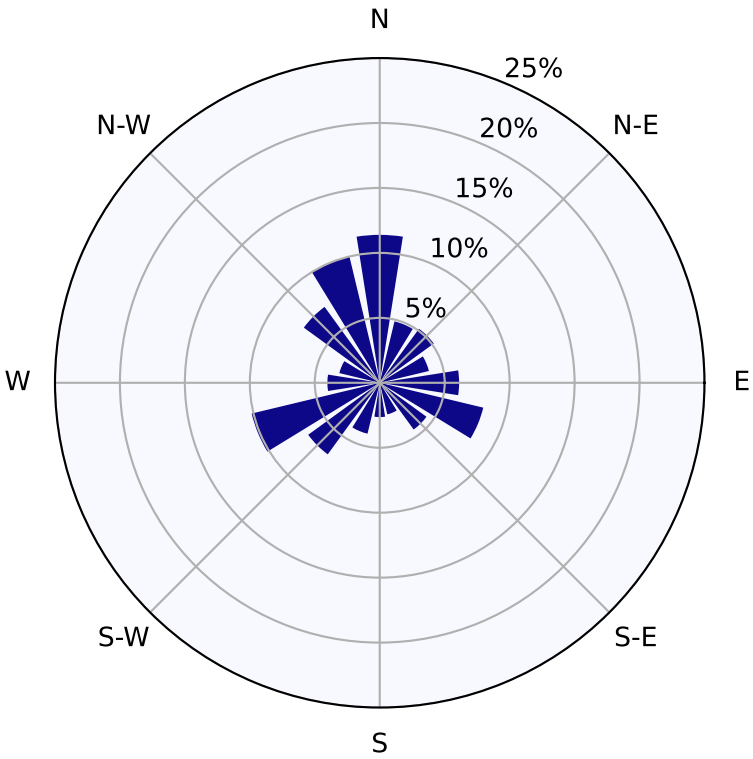


CO AAAQO = 13 ppm

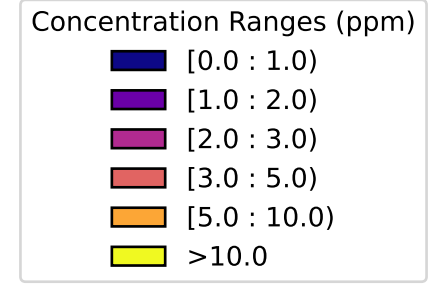
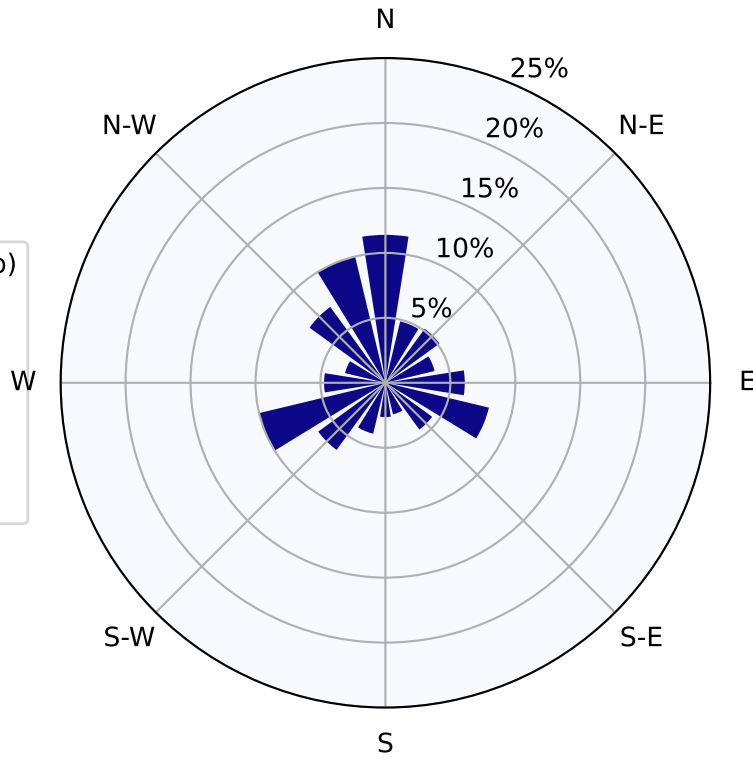


April 2026

Crescent Heights SO₂



Crescent Heights CO



Crescent Heights THC

