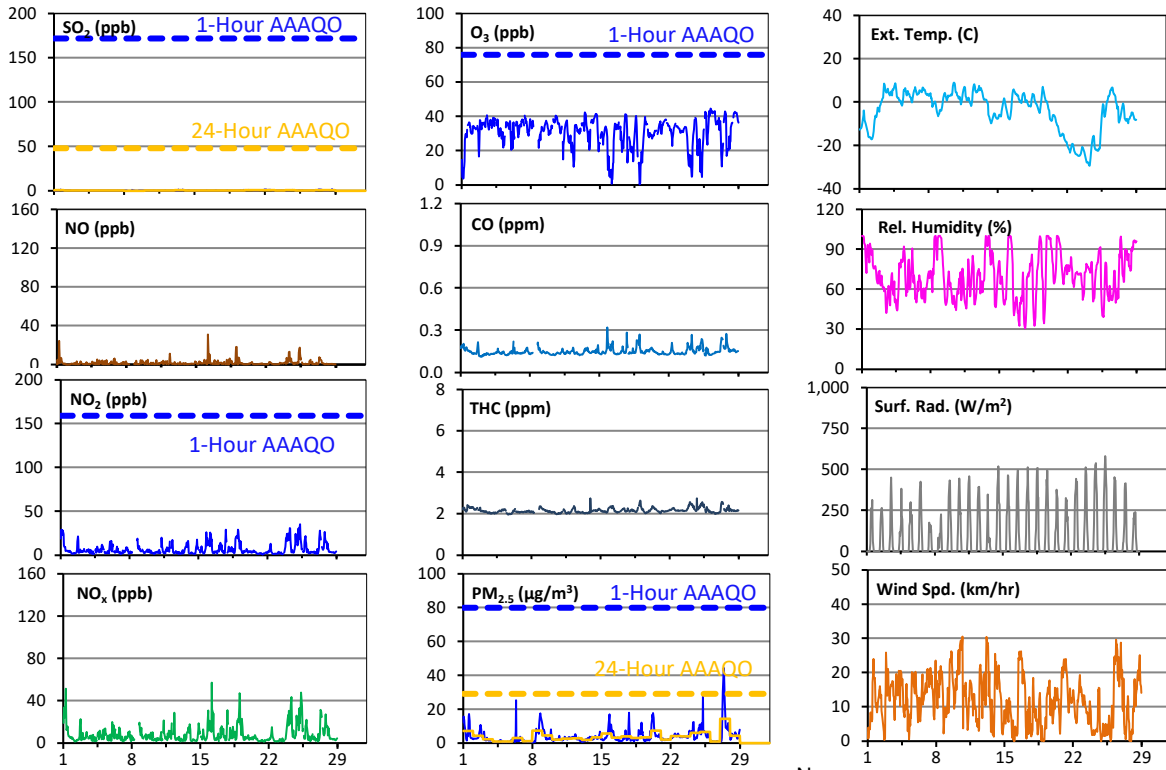
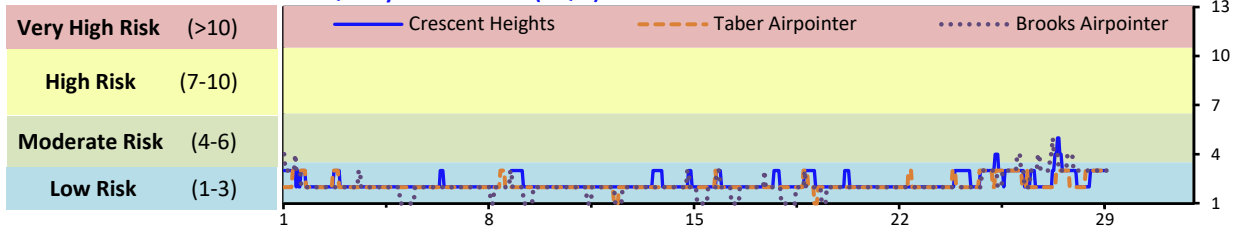


Palliser Airshed Society - February 2023 Summary Report

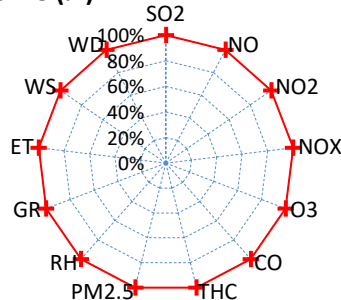
Continuous Sampling Results - Crescent Heights Station

Pollutants		Month Records		24-Hour Records				1-Hour Records			
Name	Conc Unit	Avg. Conc.	Uptime	Maximum		AAAQO Objective	Exceed No.	Maximum		AAAQO Objective	Exceed No.
				Conc	Time			Conc	Time		
SO ₂	ppb	< 1	100.0%	1	Feb-22	48	0	1.0	Feb-13 10:00	172	0
NO	ppb	1.4	100.0%	3.7	Feb-16	-	-	31.0	Feb-16 5:00	-	-
NO ₂	ppb	6.5	100.0%	15.8	Feb-25	-	-	35.2	Feb-25 8:00	159	0
NO _x	ppb	8.0	100.0%	19.4	Feb-25	-	-	57.1	Feb-16 5:00	-	-
O ₃	ppb	31	100.0%	40	Feb-26	-	-	45	Feb-26 5:00	76	0
CO	ppm	0.1	100.0%	0.2	Feb-27	-	-	0.3	Feb-15 20:00	13	0
THC	ppm	2.2	100.0%	2.3	Feb-24	-	-	2.8	Feb-24 19:00	-	-
PM _{2.5}	µg/m ³	4	100.0%	14	Feb-27	29	0	44	Feb-27 9:00	80	0

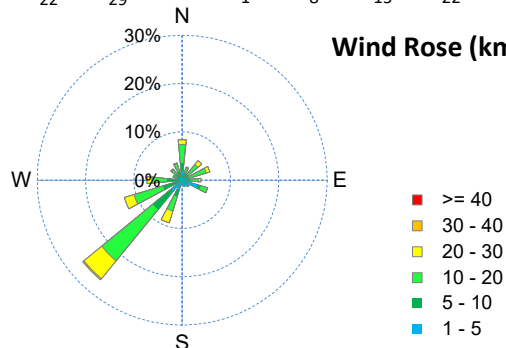
Air Quality Health Index (AQHI)



Instrument Uptime (%)

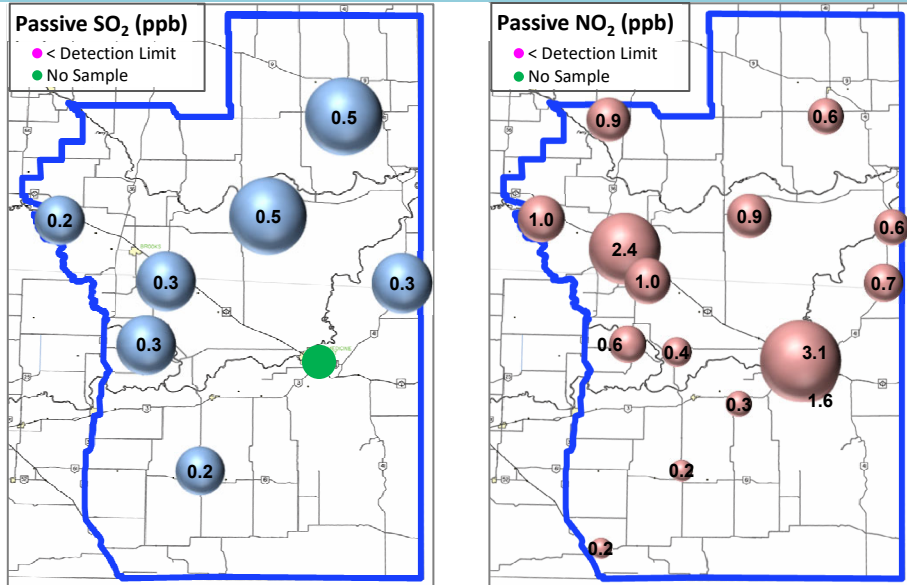


Wind Rose (km/hr)



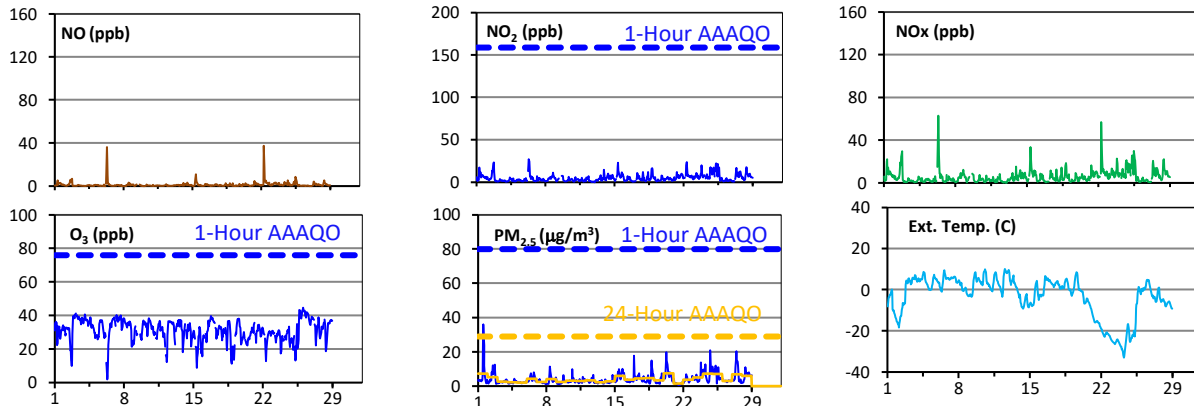
Palliser Airshed Society - February 2023 Summary Report

Passive Sampling Results

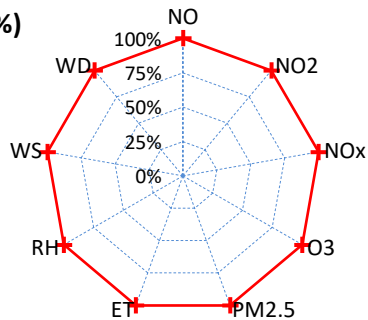


Continuous Sampling Results - Taber Airpointer

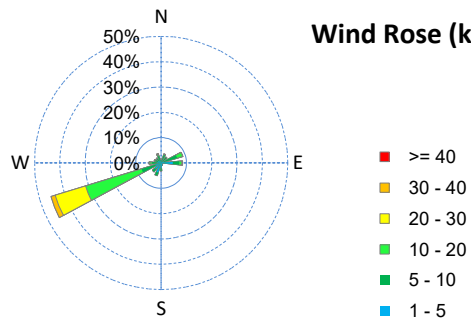
Pollutants	Conc Unit	Month Records		24-Hour Records				1-Hour Records			
		Avg. Conc.	Uptime	Maximum		AAAQO Objective	Exceed No.	Maximum		AAAQO Objective	Exceed No.
				Conc	Time			Conc	Time		
NO	ppb	1.1	100.0%	4.3	Feb-22	-	-	37.5	Feb-22 7:00	-	-
NO ₂	ppb	4.9	100.0%	10.1	Feb-25	-	-	27.1	Feb-06 8:00	159	0
NO _x	ppb	6.0	100.0%	12.2	Feb-25	-	-	63.1	Feb-06 8:00	-	-
O ₃	ppb	31	100.0%	40	Feb-26	-	-	45	Feb-26 2:00	76	0
PM _{2.5}	ug/m3	4	100.0%	7	Feb-20	29	0	36	Feb-01 14:00	80	0



Uptime (%)



Wind Rose (km/hr)

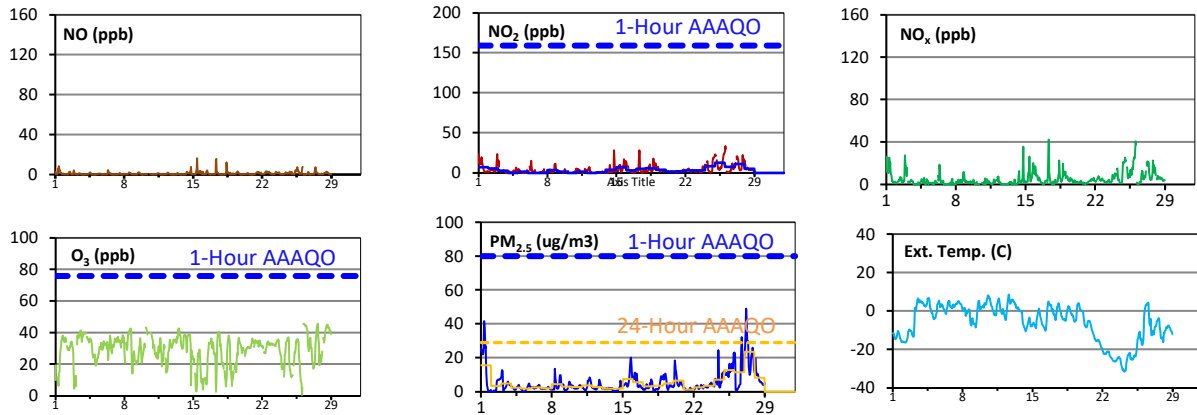


Palliser Airshed Society - February 2023 Summary Report

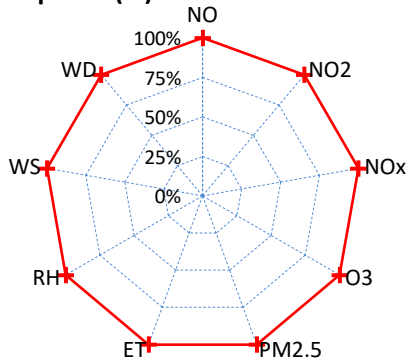
Continuous Sampling Results - Brooks

Pollutants		Month Records		24-Hour Records				1-Hour Records			
Name	Conc Unit	Avg. Conc.	Uptime	Maximum		AAAQO Objective	Exceed No.	Maximum		AAAQO Objective	Exceed No.
				Conc	Time			Conc	Time		
NO	ppb	0.9	100.0%	2.5	Feb-15	-	-	16.2	Feb-15 10:00	-	-
NO ₂	ppb	4.0	100.0%	12.5	Feb-25	-	-	33.4	Feb-26 2:00	159	0
NO _x	ppb	4.9	100.0%	14.7	Feb-25	-	-	42.1	Feb-17 8:00	-	-
O ₃	ppb	29	100.0%	39	Feb-28	-	-	46	Feb-26 6:00	76	0
PM _{2.5}	ug/m3	5	100.0%	24	Feb-27	29	0	49	Feb-27 5:00	80	0

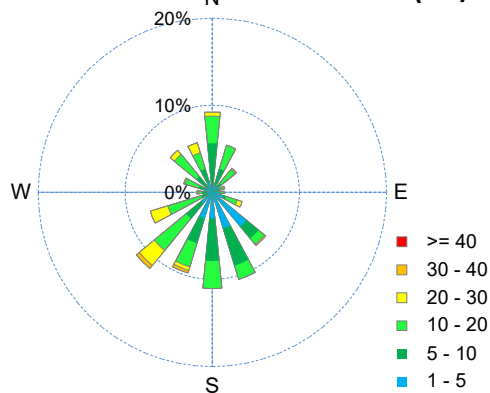
* Dotted lines are for AAAQO limits and solid lines are for averages.



Instrument Uptime (%)



Wind Rose (km/hr)



Monthly Update

- *All data has been validated; data may change after validation process.
- *The measured ambient concentrations of all parameters are within the AAAQO.
- *All compliance parameters at Crescent Heights, Taber and Brooks had > 90% operational uptime.
- * Passive Site 19 SO₂ was not analyzed for February due to a sampling error.