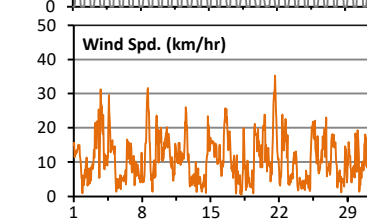
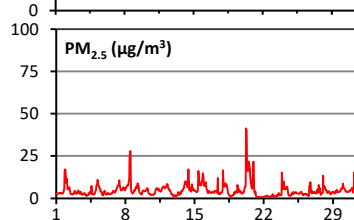
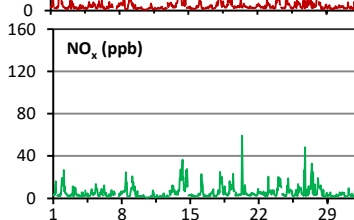
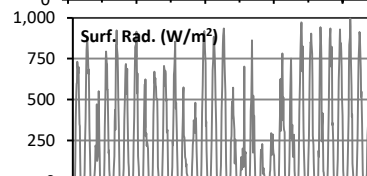
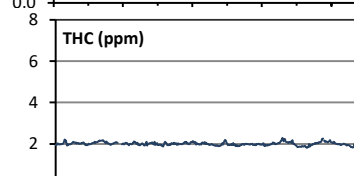
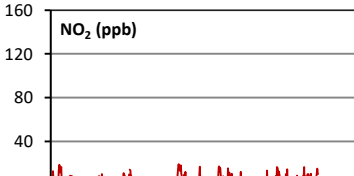
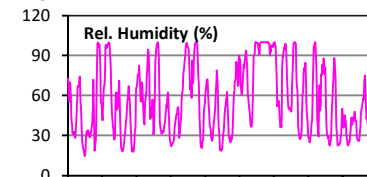
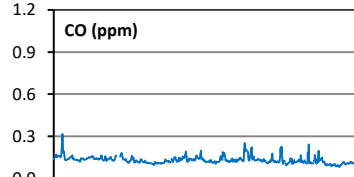
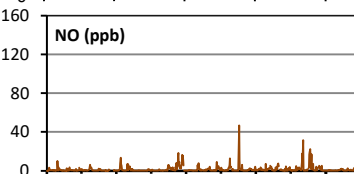
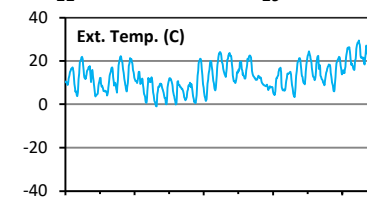
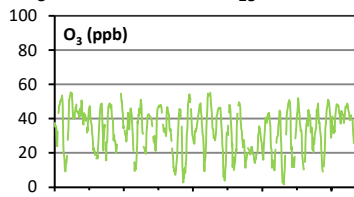
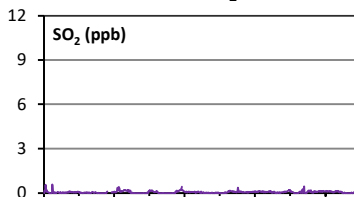
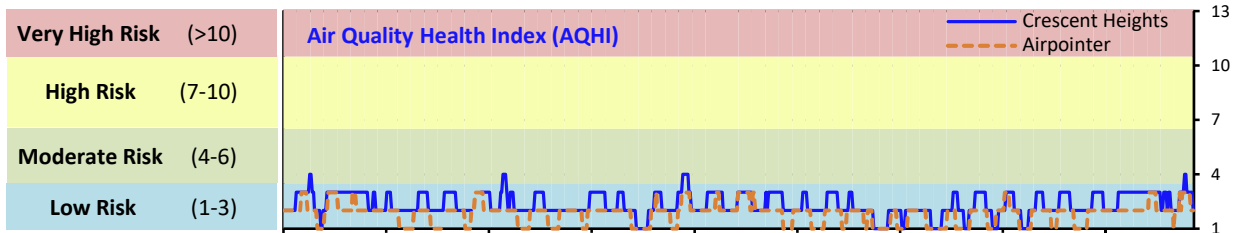


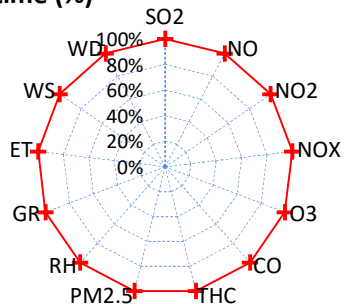
Palliser Airshed Society - May 2020 Summary Report

Continuous Sampling Results - Crescent Heights Station

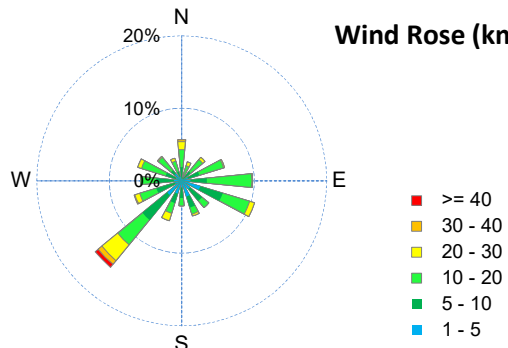
Pollutants	Month Records			24-Hour Records				1-Hour Records				
	Name	Conc Unit	Avg. Conc.	Uptime	Maximum		AAAQO Objective	Exceed No.	Maximum		AAAQO Objective	Exceed No.
					Conc	Time			Conc	Time		
SO ₂	ppb	< 1	100.0%	< 1	May-8	48	0	1	May-01 21:00	172	0	
NO	ppb	1.5	100.0%	6.1	May-14	-	-	46.7	May-20 8:00	-	-	
NO ₂	ppb	4.1	100.0%	8.6	May-14	-	-	19.4	May-14 1:00	159	0	
NO _x	ppb	5.5	100.0%	14.8	May-14	-	-	59.3	May-20 8:00	-	-	
O ₃	ppb	33	100.0%	44	May-3	-	-	60	May-31 16:00	76	0	
CO	ppm	0.1	100.0%	0.2	May-1	-	-	0.3	May-01 22:00	13	0	
THC	ppm	2.0	100.0%	2.1	May-28	-	-	2.3	May-24 0:00	-	-	
PM _{2.5}	µg/m ³	5	100.0%	16	May-20	29	0	41	May-20 6:00	80	0	



Instrument Uptime (%)

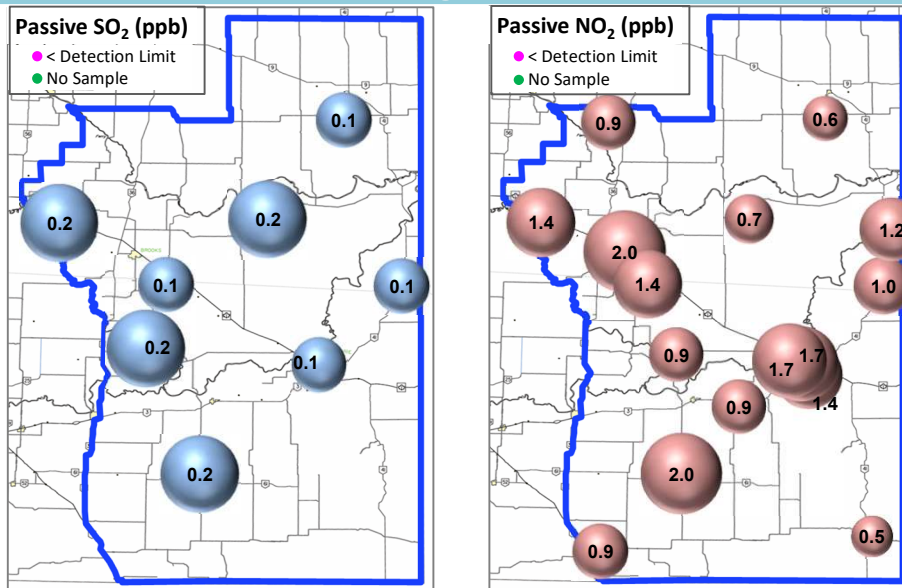


Wind Rose (km/hr)



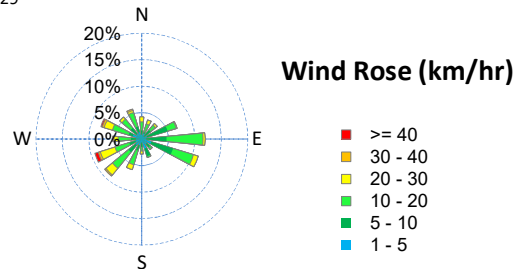
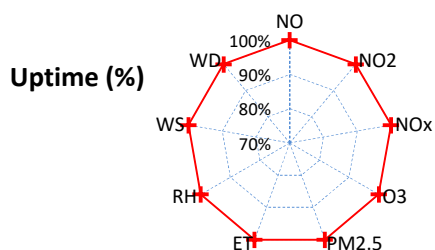
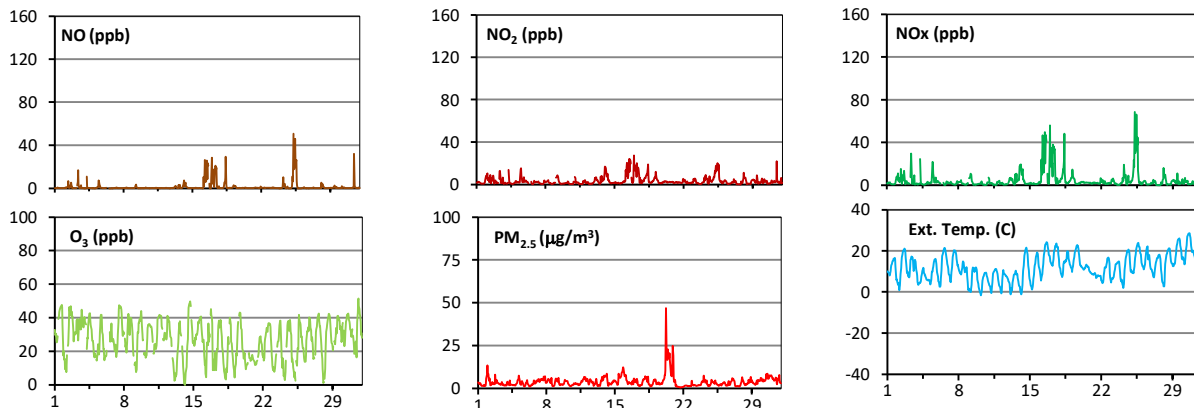
Palliser Airshed Society - May 2020 Summary Report

Passive Sampling Results



Continuous Sampling Results - Medicine Hat Trap Club

Pollutants	Conc Unit	Month Records		24-Hour Records				1-Hour Records			
		Avg. Conc.	Uptime	Maximum		AAAQO Objective	Exceed No.	Maximum		AAAQO Objective	Exceed No.
				Conc	Time			Conc	Time		
NO	ppb	1.4	100.0%	10.5	May-16	-	-	50.8	May-25 7:00	-	-
NO ₂	ppb	3.3	100.0%	11.9	May-16	-	-	27.5	May-17 0:00	159	0
NO _x	ppb	4.7	100.0%	22.4	May-16	-	-	68.5	May-25 7:00	-	-
O ₃	ppb	27	100.0%	35	May-3	-	-	52	May-31 16:00	76	0
PM _{2.5}	ug/m3	4	100.0%	16	May-20	29	0	47	May-20 6:00	80	0



Monthly Update

*All data has been validated; data may change after validation process.

*The measured ambient concentrations of all parameters are within the AAAQO.

*All compliance parameters had > 90% operational uptime.