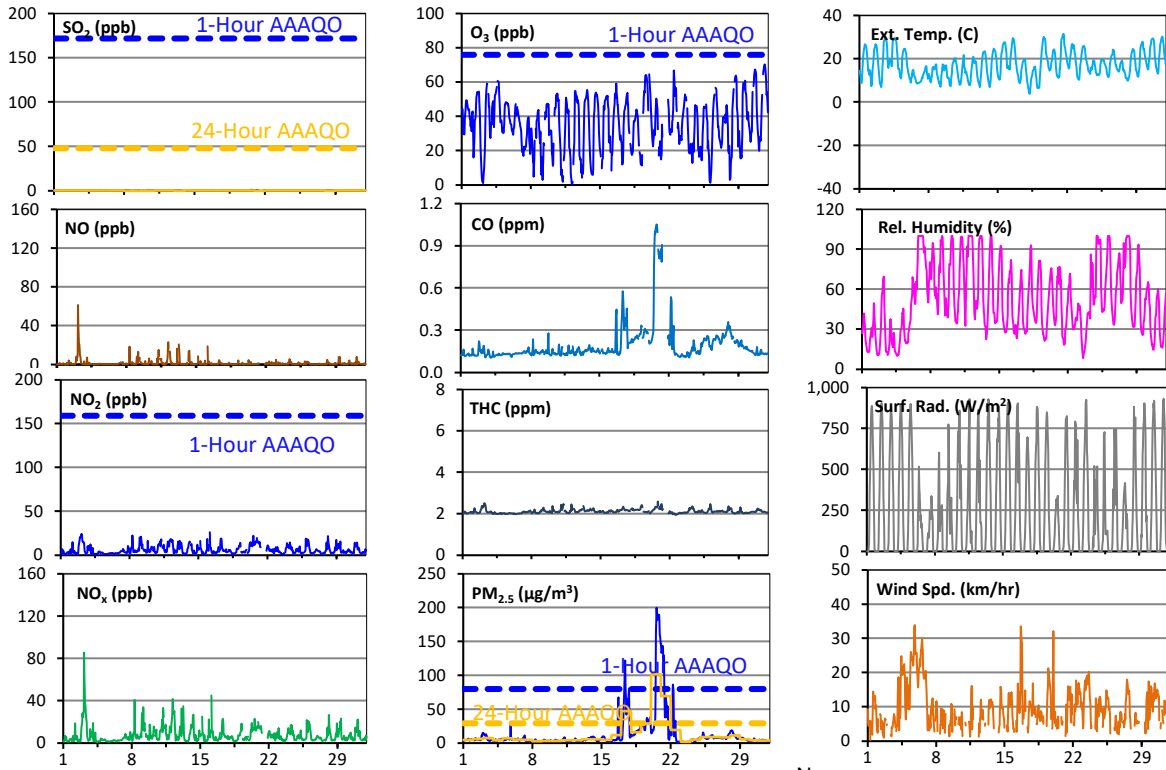
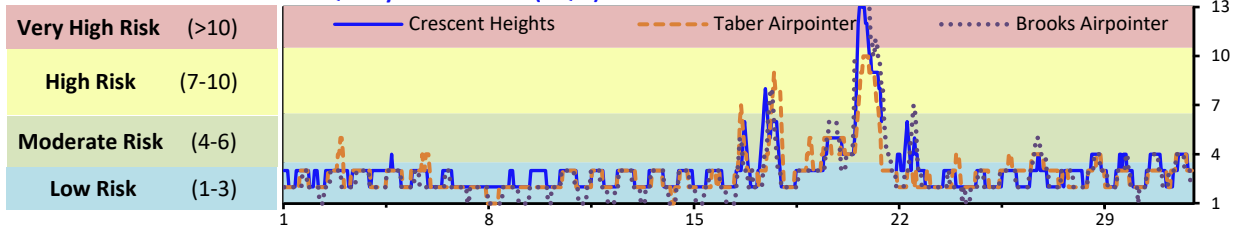


# Palliser Airshed Society - May 2023 Summary Report

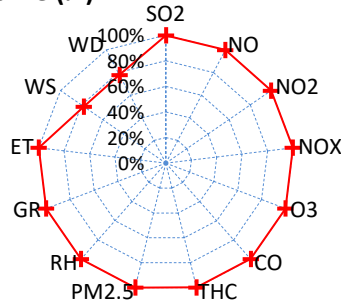
## Continuous Sampling Results - Crescent Heights Station

Pollutants		Month Records		24-Hour Records				1-Hour Records			
Name	Conc Unit	Avg. Conc.	Uptime	Maximum		AAAQO	Exceed	Maximum		AAAQO	Exceed
				Conc	Time	Objective	No.	Conc	Time	Objective	No.
SO <sub>2</sub>	ppb	< 1	99.9%	< 1	May-20	48	0	1.0	May-20 16:00	172	0
NO	ppb	1.4	99.9%	8.9	May-3	-	-	61.4	May-03 4:00	-	-
NO <sub>2</sub>	ppb	6.0	99.9%	12.2	May-20	-	-	26.1	May-16 4:00	159	0
NO <sub>x</sub>	ppb	7.4	99.9%	20.0	May-3	-	-	85.6	May-03 4:00	-	-
O <sub>3</sub>	ppb	35	99.9%	48	May-4	-	-	70	May-31 16:00	76	0
CO	ppm	0.2	99.9%	0.6	May-20	-	-	1.1	May-20 19:00	13	0
THC	ppm	2.1	99.9%	2.2	May-20	-	-	2.6	May-20 20:00	-	-
PM <sub>2.5</sub>	µg/m <sup>3</sup>	13	100.0%	102	May-20	29	3	200	May-20 14:00	80	26

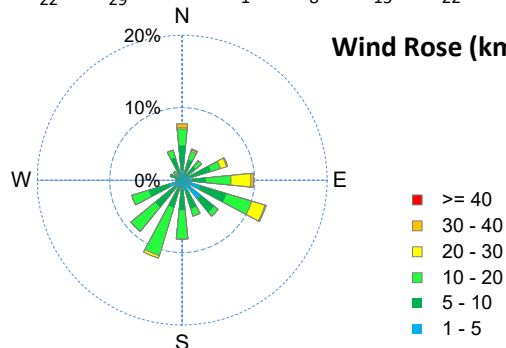
### Air Quality Health Index (AQHI)



### Instrument Uptime (%)

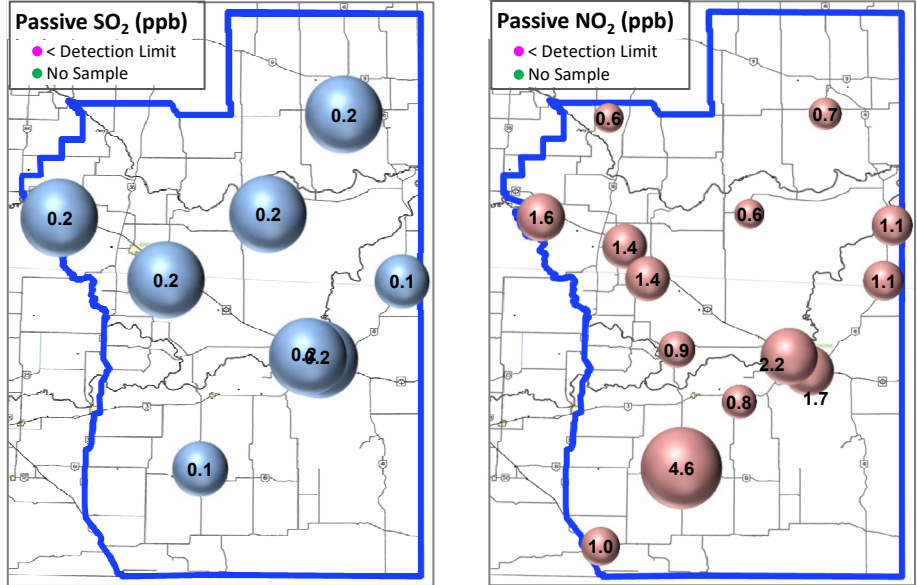


### Wind Rose (km/hr)



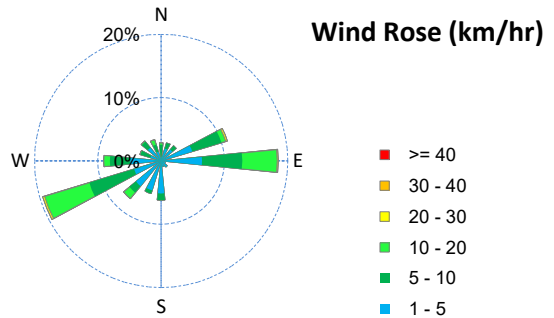
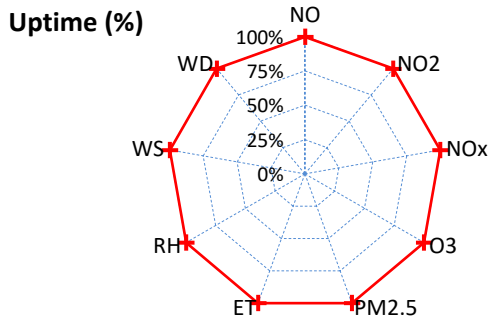
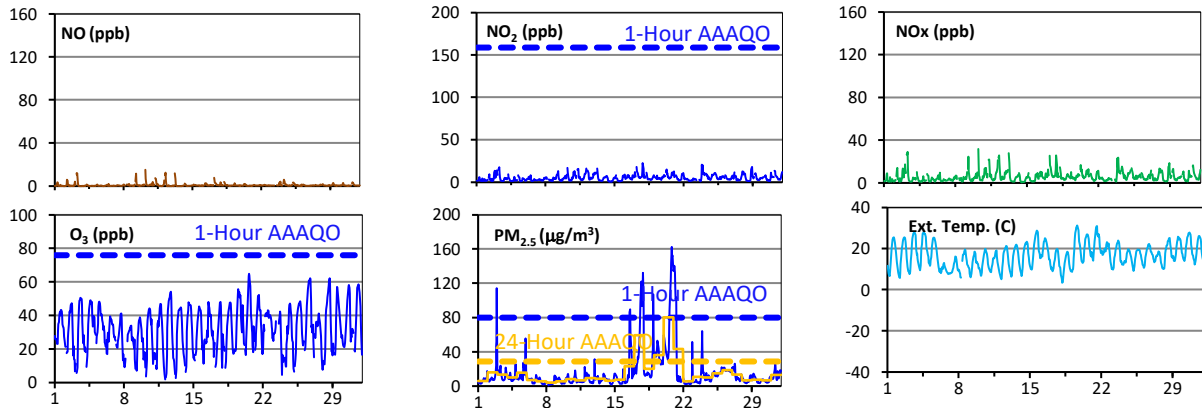
# Palliser Airshed Society - May 2023 Summary Report

## Passive Sampling Results



## Continuous Sampling Results - Taber Airpointer

Pollutants	Conc Unit	Month Records		24-Hour Records				1-Hour Records			
		Avg. Conc.	Uptime	Maximum		AAAQO Objective	Exceed No.	Maximum		AAAQO Objective	Exceed No.
				Conc	Time			Conc	Time		
NO	ppb	0.7	99.7%	2.0	May-03	-	-	15.2	May-10 6:00	-	-
NO <sub>2</sub>	ppb	5.1	99.7%	9.5	May-17	-	-	22.5	May-17 21:00	159	0
NO <sub>x</sub>	ppb	5.8	99.7%	11.0	May-17	-	-	31.9	May-10 6:00	-	-
O <sub>3</sub>	ppb	32	99.7%	41	May-26	-	-	65	May-20 15:00	76	0
PM <sub>2.5</sub>	ug/m3	16	99.7%	81	May-20	29	4	162	May-20 20:00	80	30

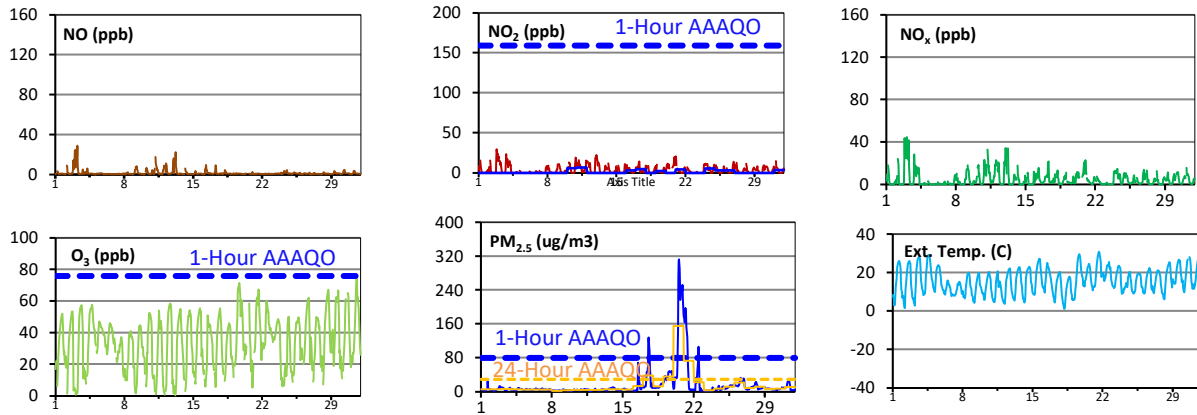


# Palliser Airshed Society - May 2023 Summary Report

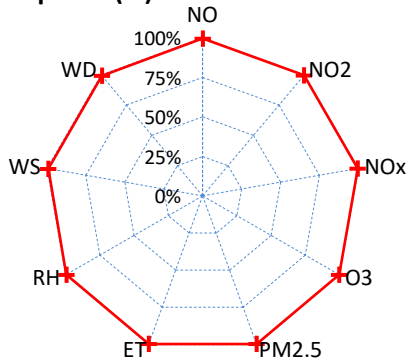
## Continuous Sampling Results - Brooks

Pollutants		Month Records		24-Hour Records				1-Hour Records			
Name	Conc Unit	Avg. Conc.	Uptime	Maximum		AAAQO Objective	Exceed No.	Maximum		AAAQO Objective	Exceed No.
				Conc	Time			Conc	Time		
NO	ppb	1.4	99.6%	5.8	May-03	-	-	28.8	May-03 7:00	-	-
NO <sub>2</sub>	ppb	3.5	99.6%	8.1	May-03	-	-	29.5	May-02 21:00	159	0
NO <sub>x</sub>	ppb	4.8	99.6%	13.8	May-03	-	-	44.7	May-03 2:00	-	-
O <sub>3</sub>	ppb	34	99.6%	45	May-19	-	-	75	May-31 15:00	76	0
PM <sub>2.5</sub>	ug/m3	16	99.6%	155	May-20	29	4	313	May-20 14:00	80	30

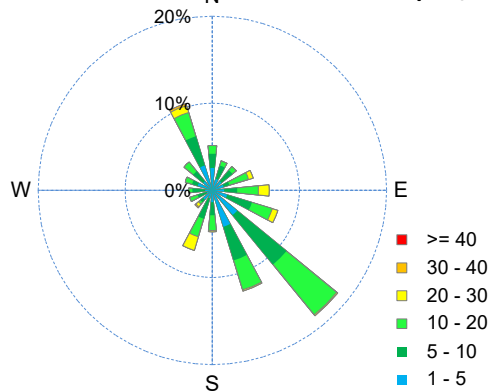
\* Dotted lines are for AAAQO limits and solid lines are for averages.



### Instrument Uptime (%)



### Wind Rose (km/hr)



## Monthly Update

\*All data has been validated; data may change after validation process.

\*The measured ambient concentrations of all parameters are within the AAAQO with the exception of three 24-hour and 26 1-hour PM 2.5 exceedances recorded at Crescent Heights, four 24-hour and 30 1-hour PM 2.5 exceedances at Brooks and four 24-hour and 30 1-hour PM 2.5 exceedances at Taber.

All PM<sub>2.5</sub> exceedances attributed to wildfire smoke in the area.

\*All compliance parameters at Crescent Heights, Taber and Brooks had > 90% operational uptime with the exception of WS/WD at Crescent Heights.