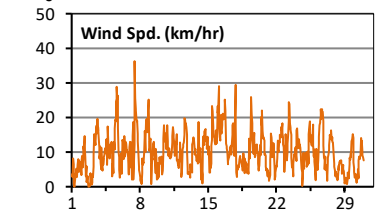
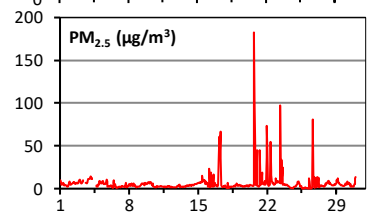
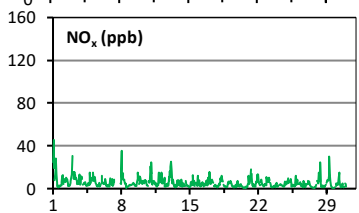
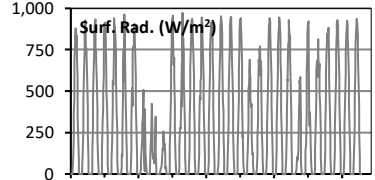
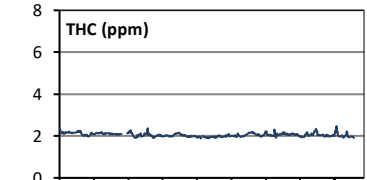
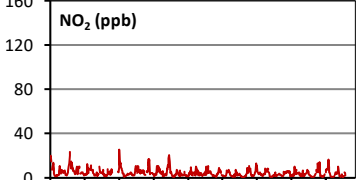
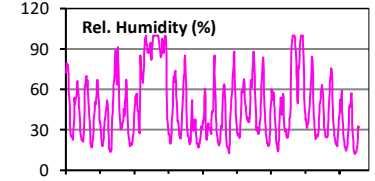
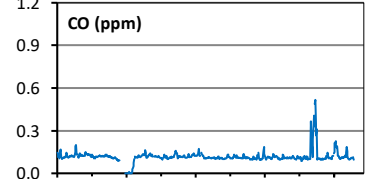
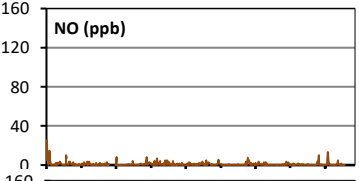
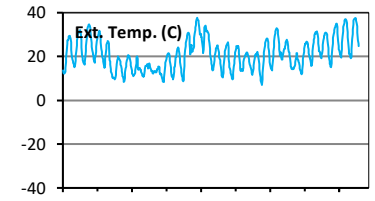
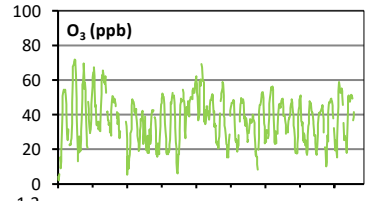
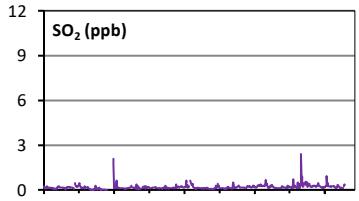
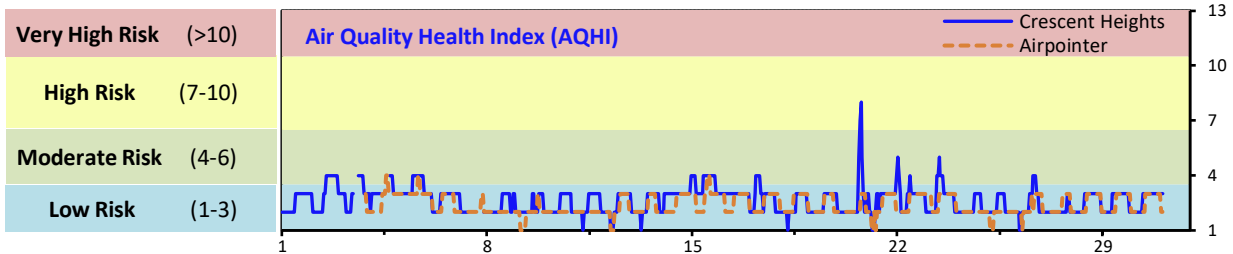


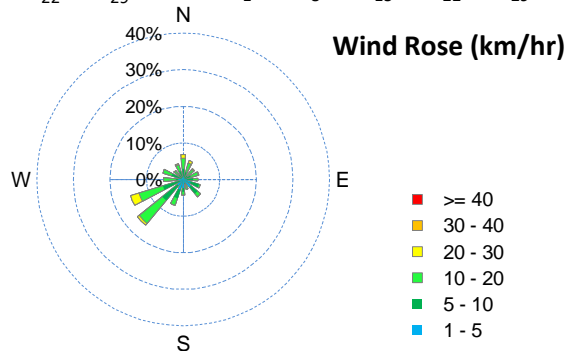
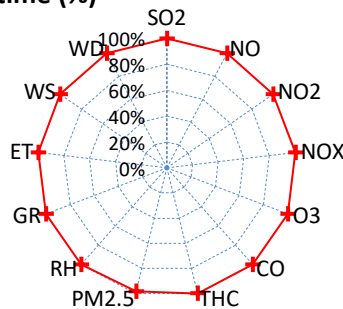
Palliser Airshed Society - June 2021 Summary Report

Continuous Sampling Results - Crescent Heights Station

Pollutants		Month Records		24-Hour Records				1-Hour Records			
Name	Conc Unit	Avg. Conc.	Uptime	Maximum		AAAQO Objective	Exceed No.	Maximum		AAAQO Objective	Exceed No.
				Conc	Time			Conc	Time		
SO ₂	ppb	< 1	100.0%	< 1	Jun-26	48	0	0.7	Jun-26 16:00	172	0
NO	ppb	0.9	100.0%	3.4	Jun-1	-	-	25.4	Jun-01 2:00	-	-
NO ₂	ppb	4.5	100.0%	8.0	Jun-3	-	-	25.5	Jun-08 1:00	159	0
NO _x	ppb	5.4	100.0%	10.2	Jun-1	-	-	45.5	Jun-01 2:00	-	-
O ₃	ppb	38	100.0%	51	Jun-15	-	-	72	Jun-02 17:00	76	0
CO	ppm	0.1	100.0%	0.2	Jun-26	-	-	0.5	Jun-27 3:00	13	0
THC	ppm	2.1	100.0%	2.2	Jun-1	-	-	2.5	Jun-29 5:00	-	-
PM _{2.5}	µg/m ³	6	98.1%	20	Jun-20	29	0	183	Jun-20 17:00	80	4

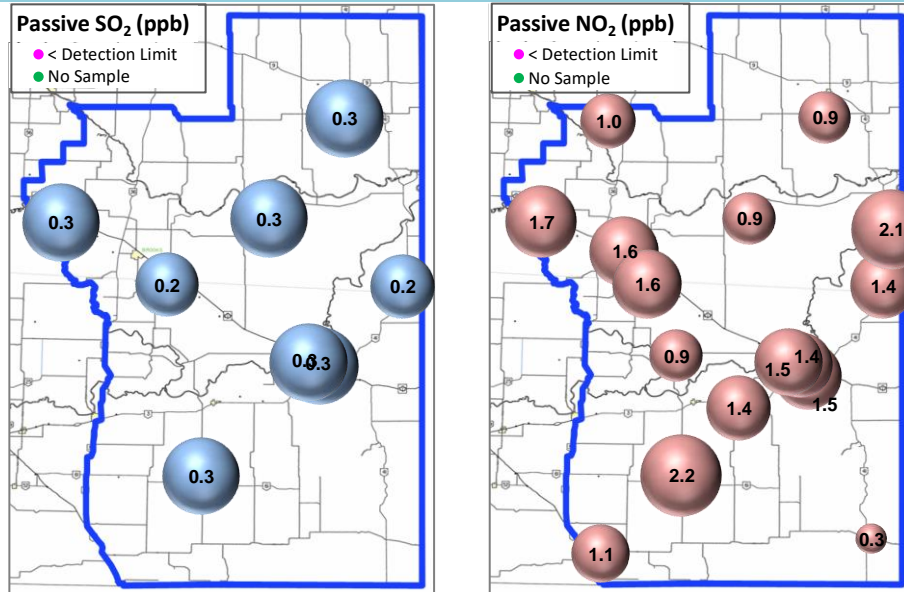


Instrument Uptime (%)



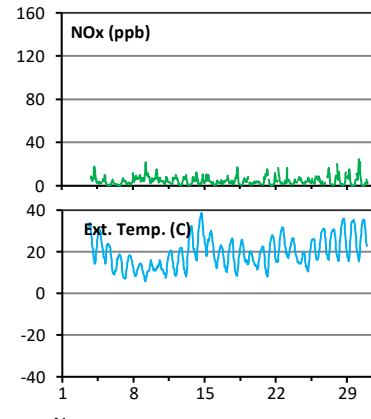
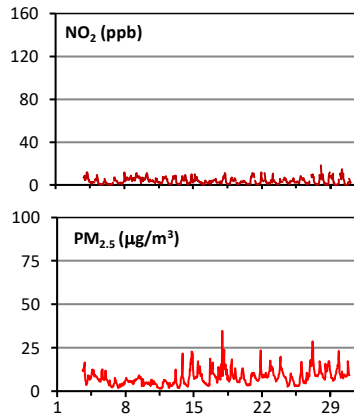
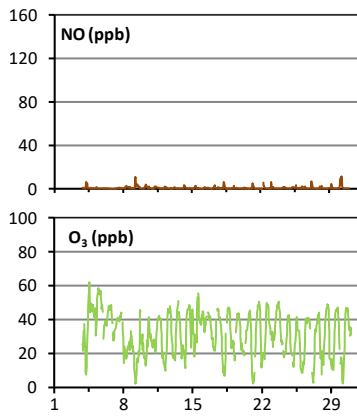
Palliser Airshed Society - June 2021 Summary Report

Passive Sampling Results

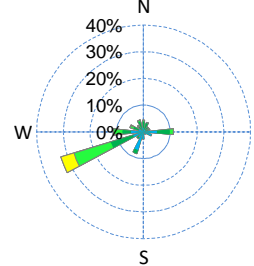
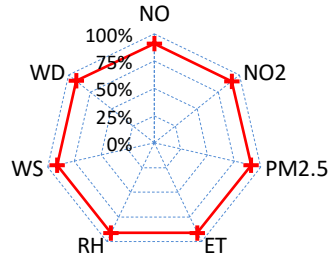


Continuous Sampling Results - Taber Airpointer

Pollutants	Conc Unit	Month Records		24-Hour Records				1-Hour Records			
		Avg. Conc.	Uptime	Maximum Conc	Maximum Time	AAAQO Objective	Exceed No.	Maximum Conc	Maximum Time	AAAQO Objective	Exceed No.
NO	ppb	0.7	91.0%	2.1	Jun-9	-	-	11.4	Jun-30 7:00	-	-
NO ₂	ppb	3.8	91.0%	6.2	Jun-9	-	-	18.3	Jun-28 1:00	159	0
NO _x	ppb	4.5	91.0%	8.3	Jun-9	-	-	24.7	Jun-30 5:00	-	-
O ₃	ppb	32	91.0%	48	Jun-5	-	-	62	Jun-04 14:00	76	0
PM _{2.5}	ug/m3	8	91.1%	14	Jun-27	29	0	35	Jun-17 23:00	80	0



Uptime (%)



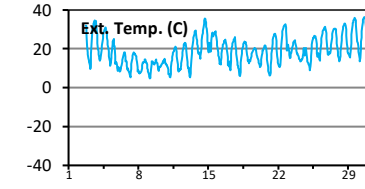
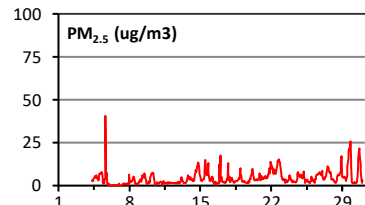
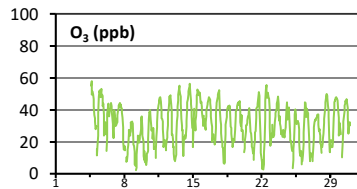
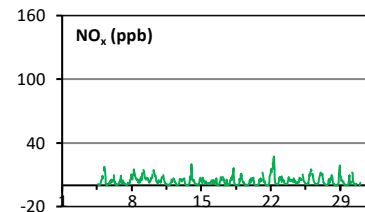
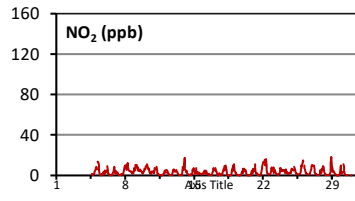
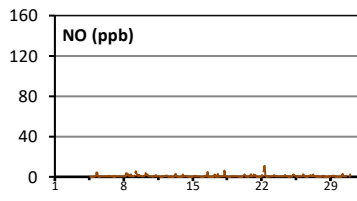
Wind Rose (km/hr)

- ≥ 40
- 30 - 40
- 20 - 30
- 10 - 20
- 5 - 10
- 1 - 5

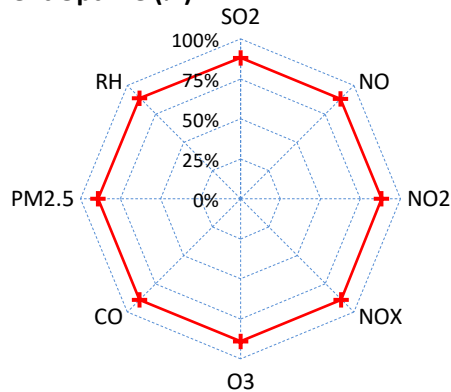
Palliser Airshed Society - June 2021 Summary Report

Continuous Sampling Results - Brooks

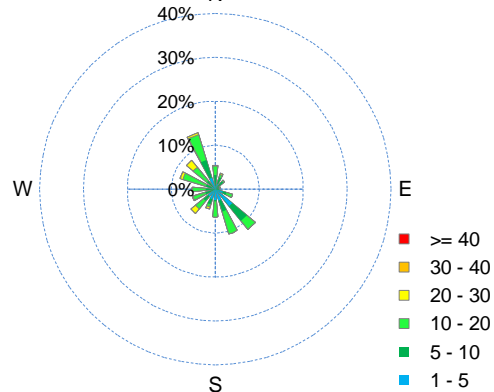
Pollutants		Month Records		24-Hour Records				1-Hour Records			
Name	Conc Unit	Avg. Conc.	Uptime	Maximum		AAAQO Objective	Exceed No.	Maximum		AAAQO Objective	Exceed No.
				Conc	Time			Conc	Time		
NO	ppb	0.7	88.2%	1.9	Jun-22	-	-	10.9	Jun-22 8:00	-	-
NO ₂	ppb	3.4	88.2%	6.6	Jun-22	-	-	18.4	Jun-28 23:00	159	0
NO _x	ppb	4.0	88.2%	8.5	Jun-22	-	-	27.2	Jun-22 8:00	-	-
O ₃	ppb	31	89.0%	42	Jun-15	-	-	58	Jun-04 16:00	76	0
PM _{2.5}	ug/m3	4	89.0%	11	Jun-22	29	0	41	Jun-05 16:00	80	0



Instrument Uptime (%)



Wind Rose (km/hr)



Monthly Update

*All data has been validated; data may change after validation process.

*The measured ambient concentrations of all parameters are within the AAAQO with the exception of four 1-hour PM_{2.5} exceedances recorded at Crescent Heights.

*All compliance parameters at Crescent Heights had > 90% operational uptime.

* The Medicine Hat Trap Club Airpointer was relocated to Taber on June 2.

*All compliance parameters at the Taber Airpointer had < 90% operational uptime following the move downtime.

* The Brooks Airpointer became operational following its calibration on June 4 resulting in <90% operational uptime.