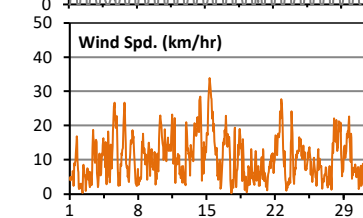
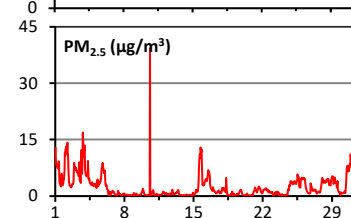
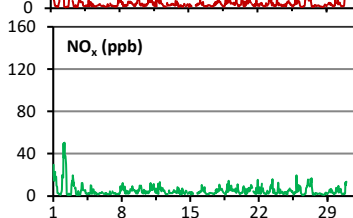
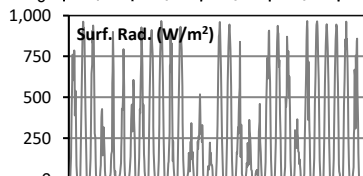
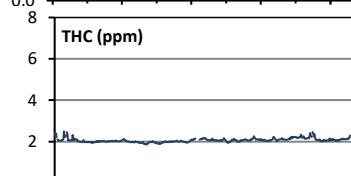
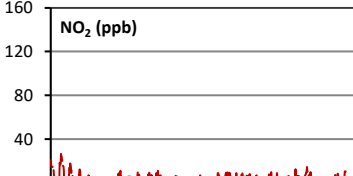
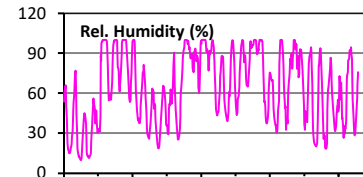
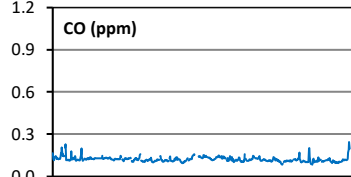
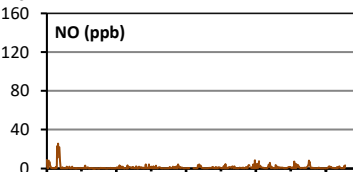
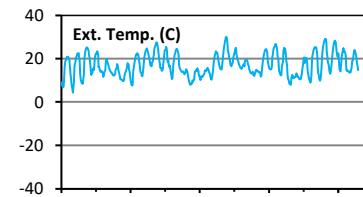
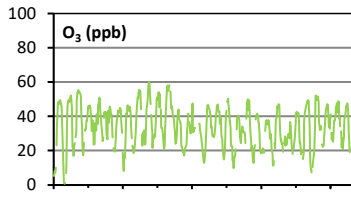
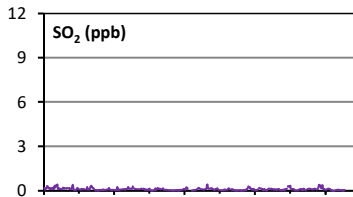
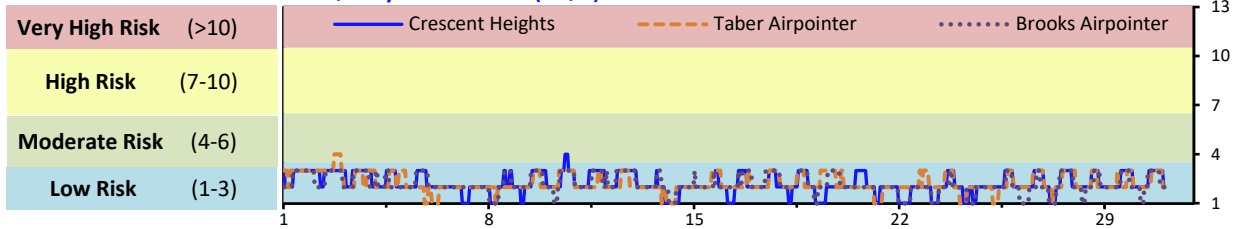


Palliser Airshed Society - June 2022 Summary Report

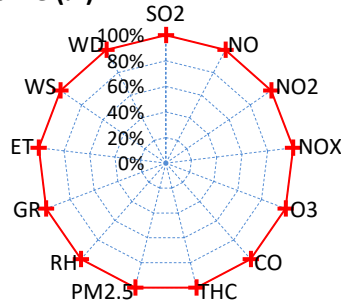
Continuous Sampling Results - Crescent Heights Station

Pollutants		Month Records		24-Hour Records				1-Hour Records			
Name	Conc Unit	Avg. Conc.	Uptime	Maximum		AAAQO Objective	Exceed No.	Maximum		AAAQO Objective	Exceed No.
				Conc	Time			Conc	Time		
SO ₂	ppb	< 1	100.0%	< 1	Jun-2	48	0	< 1	Jun-02 9:00	172	0
NO	ppb	0.9	100.0%	5.4	Jun-2	-	-	25.8	Jun-02 4:00	-	-
NO ₂	ppb	3.9	100.0%	9.0	Jun-2	-	-	26.7	Jun-02 2:00	159	0
NO _x	ppb	4.8	100.0%	14.4	Jun-2	-	-	50.4	Jun-02 4:00	-	-
O ₃	ppb	34	100.0%	43	Jun-12	-	-	60	Jun-10 16:00	76	0
CO	ppm	0.1	100.0%	0.1	Jun-1	-	-	0.2	Jun-30 22:00	13	0
THC	ppm	2.1	100.0%	2.2	Jun-26	-	-	2.5	Jun-02 0:00	-	-
PM _{2.5}	µg/m ³	2	100.0%	8	Jun-3	29	0	39	Jun-10 15:00	80	0

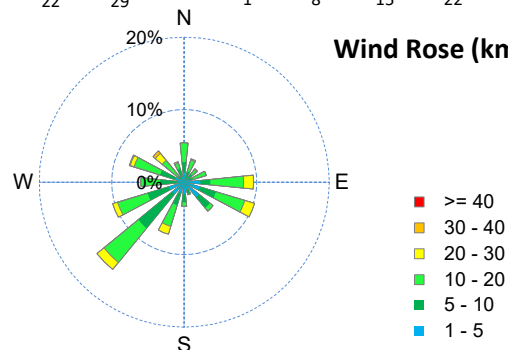
Air Quality Health Index (AQHI)



Instrument Uptime (%)

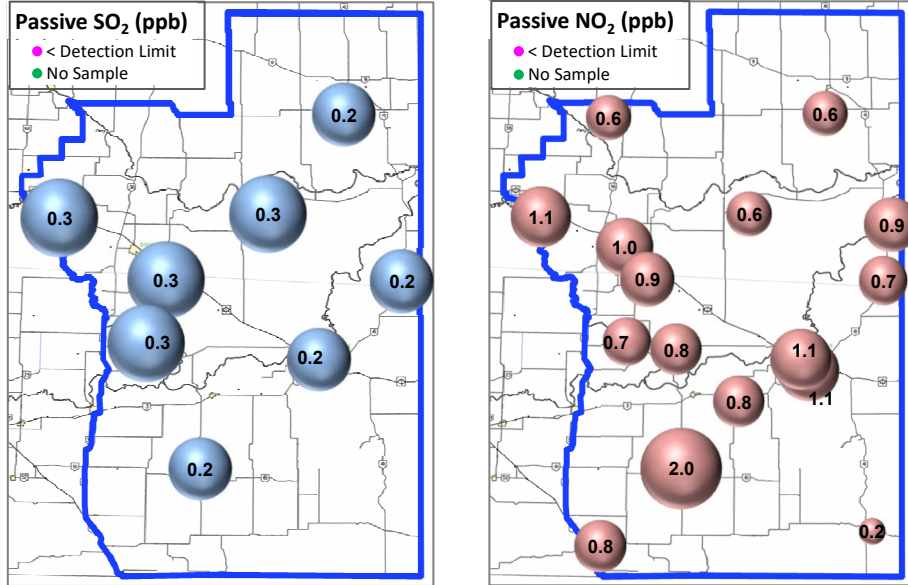


Wind Rose (km/hr)



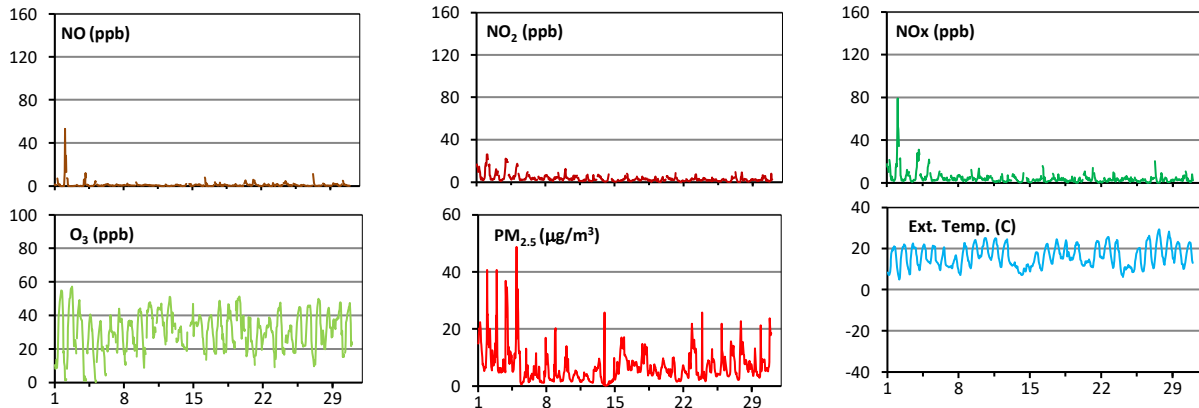
Palliser Airshed Society - June 2022 Summary Report

Passive Sampling Results

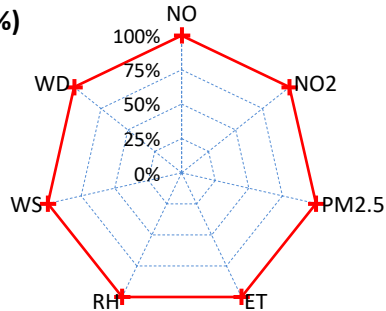


Continuous Sampling Results - Taber Airpointer

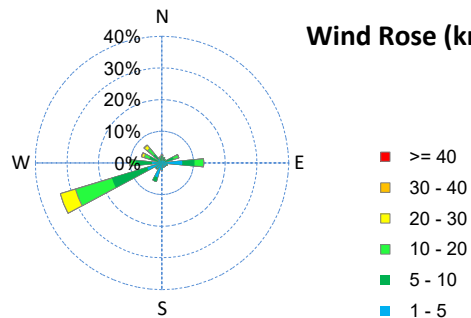
Pollutants	Conc Unit	Month Records		24-Hour Records				1-Hour Records			
		Avg. Conc.	Uptime	Maximum		AAAQO Objective	Exceed No.	Maximum		AAAQO Objective	Exceed No.
				Conc	Time			Conc	Time		
NO	ppb	0.9	100.0%	6.5	Jun-02	-	-	53.3	Jun-02 2:00	-	-
NO ₂	ppb	3.3	100.0%	9.3	Jun-2	-	-	26.3	Jun-02 3:00	159	0
NO _x	ppb	4.2	100.0%	15.7	Jun-2	-	-	79.2	Jun-02 2:00	-	-
O ₃	ppb	31	100.0%	39	Jun-11	-	-	57	Jun-02 19:00	76	0
PM _{2.5}	ug/m3	7	100.0%	14	Jun-2	29	0	49	Jun-04 23:00	80	0



Uptime (%)



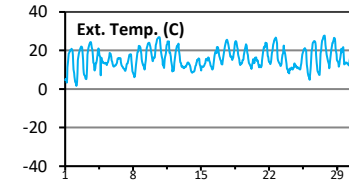
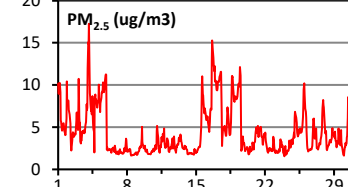
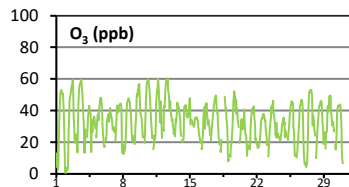
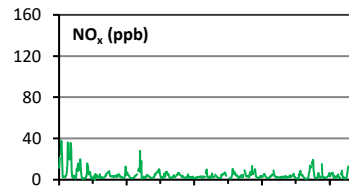
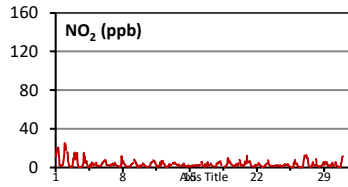
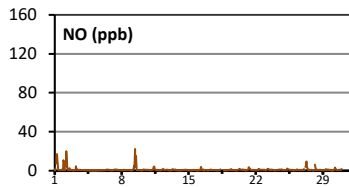
Wind Rose (km/hr)



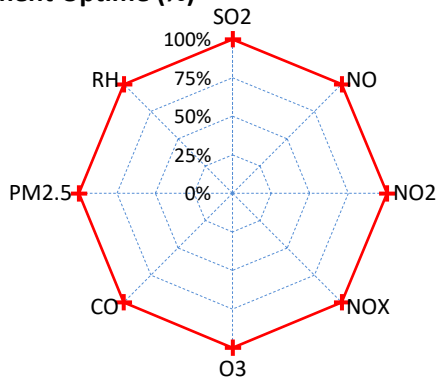
Palliser Airshed Society - June 2022 Summary Report

Continuous Sampling Results - Brooks

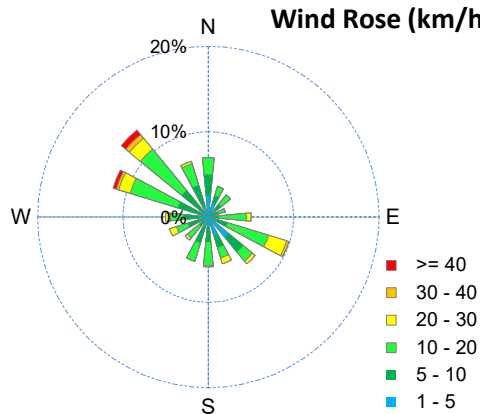
Pollutants		Month Records		24-Hour Records				1-Hour Records			
Name	Conc Unit	Avg. Conc.	Uptime	Maximum		AAAQO Objective	Exceed No.	Maximum		AAAQO Objective	Exceed No.
				Conc	Time			Conc	Time		
NO	ppb	1.0	100.0%	3.6	Jun-1	-	-	22.4	Jun-09 10:00	-	-
NO ₂	ppb	3.3	100.0%	9.9	Jun-1	-	-	25.4	Jun-01 23:00	159	0
NO _x	ppb	4.2	100.0%	13.5	Jun-1	-	-	37.9	Jun-01 7:00	-	-
O ₃	ppb	33	100.0%	45	Jun-12	-	-	61	Jun-12 17:00	76	0
PM _{2.5}	ug/m3	4	100.0%	9	Jun-16	29	0	17	Jun-04 4:00	80	0



Instrument Uptime (%)



Wind Rose (km/hr)



Monthly Update

*All data has been validated; data may change after validation process.

*The measured ambient concentrations of all parameters are within the AAAQO.

*All compliance parameters at Crescent Heights, Taber and Brooks had > 90% operational uptime.