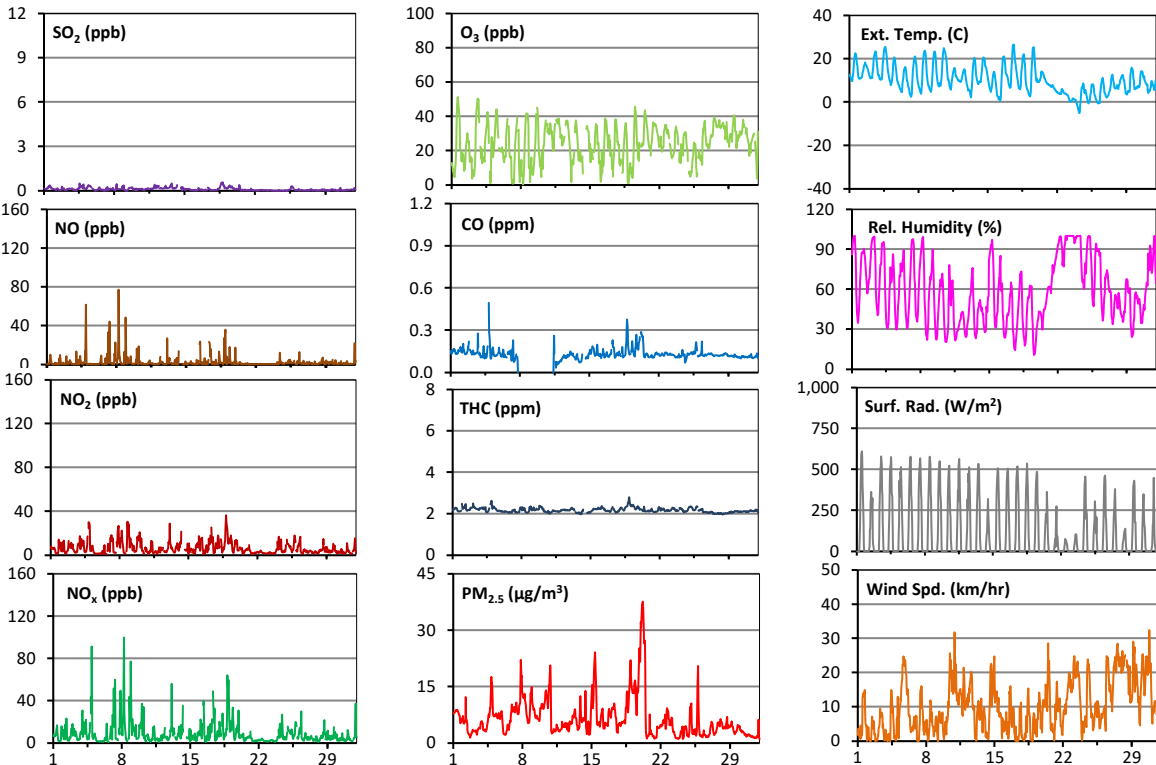
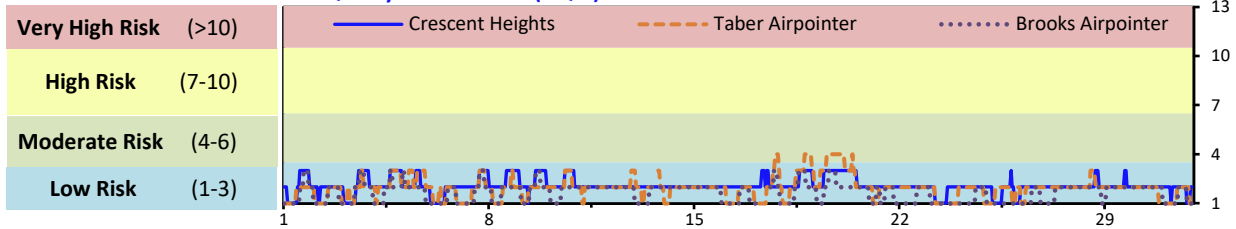


Palliser Airshed Society - October 2022 Summary Report

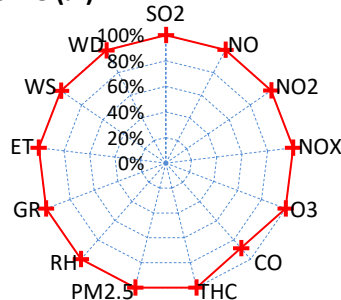
Continuous Sampling Results - Crescent Heights Station

Pollutants		Month Records		24-Hour Records				1-Hour Records			
Name	Conc Unit	Avg. Conc.	Uptime	Maximum		AAAQO Objective	Exceed No.	Maximum		AAAQO Objective	Exceed No.
				Conc	Time			Conc	Time		
SO ₂	ppb	< 1	100.0%	< 1	Oct-18	48	0	1.0	Oct-18 18:00	172	0
NO	ppb	2.4	100.0%	9.9	Oct-8	-	-	77.2	Oct-08 6:00	-	-
NO ₂	ppb	6.2	100.0%	13.6	Oct-18	-	-	36.4	Oct-18 20:00	159	0
NO _x	ppb	8.6	100.0%	21.5	Oct-8	-	-	99.9	Oct-08 6:00	-	-
O ₃	ppb	24	100.0%	33	Oct-28	-	-	51	Oct-01 16:00	76	0
CO	ppm	0.1	88.6%	0.2	Oct-20	-	-	0.5	Oct-04 21:00	13	0
THC	ppm	2.2	100.0%	2.4	Oct-18	-	-	2.8	Oct-18 22:00	-	-
PM _{2.5}	µg/m ³	6	100.0%	16	Oct-19	29	0	38	Oct-20 5:00	80	0

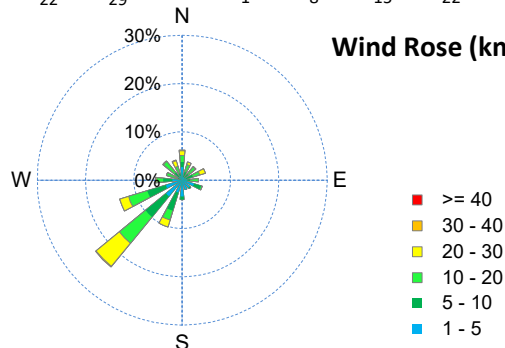
Air Quality Health Index (AQHI)



Instrument Uptime (%)

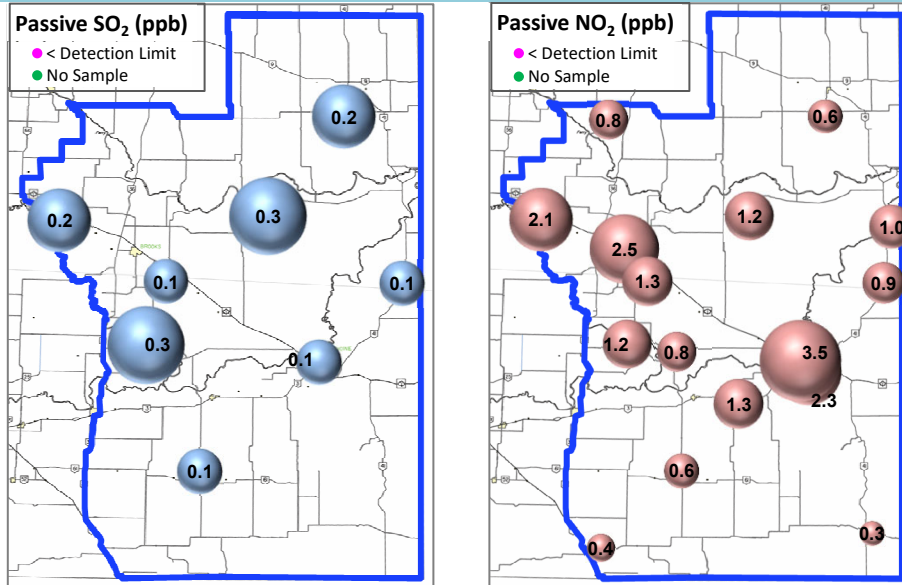


Wind Rose (km/hr)



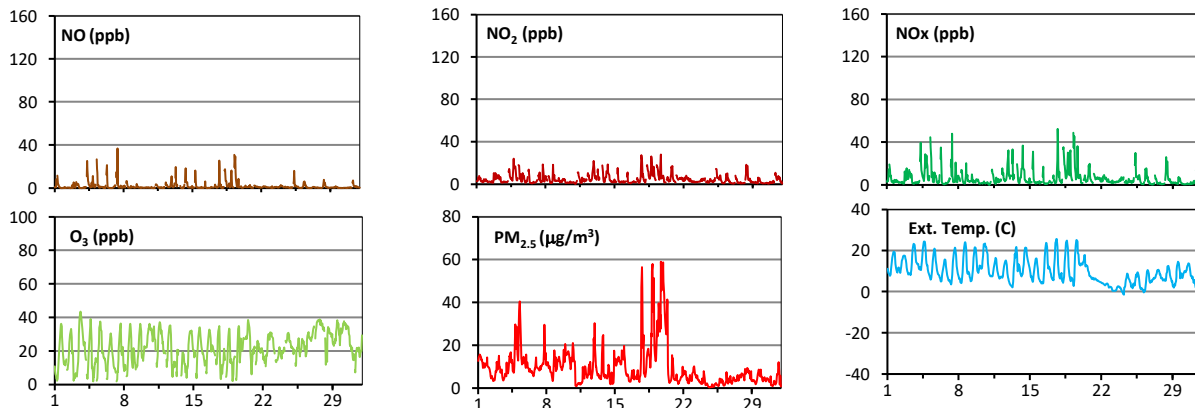
Palliser Airshed Society - October 2022 Summary Report

Passive Sampling Results

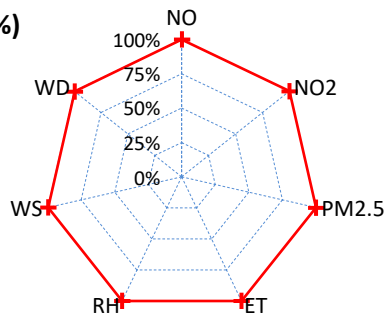


Continuous Sampling Results - Taber Airpointer

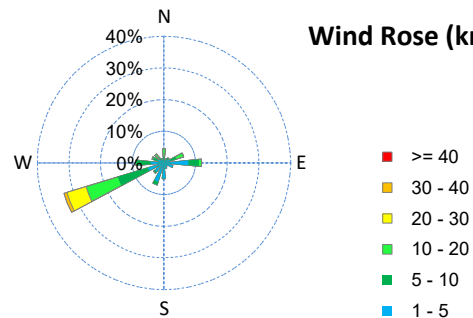
Pollutants	Conc Unit	Month Records		24-Hour Records				1-Hour Records			
		Avg. Conc.	Uptime	Maximum		AAAQO Objective	Exceed No.	Maximum		AAAQO Objective	Exceed No.
				Conc	Time			Conc	Time		
NO	ppb	1.7	100.0%	5.6	Oct-19	-	-	36.9	Oct-07 10:00	-	-
NO ₂	ppb	4.6	100.0%	10.7	Oct-18	-	-	28.0	Oct-19 17:00	159	0
NO _x	ppb	6.3	100.0%	15.4	Oct-18	-	-	52.6	Oct-17 18:00	-	-
O ₃	ppb	22	100.0%	35	Oct-27	-	-	44	Oct-03 15:00	76	0
PM _{2.5}	ug/m3	9	100.0%	33	Oct-19	29	1	59	Oct-19 18:00	80	0



Uptime (%)



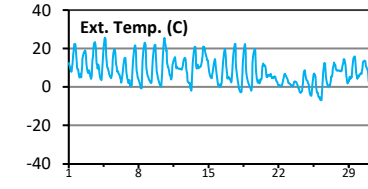
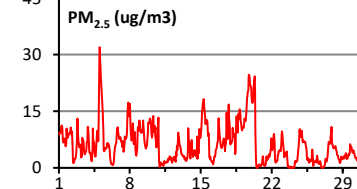
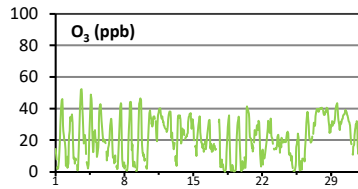
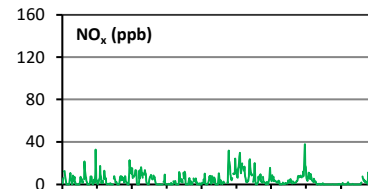
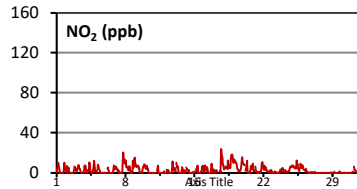
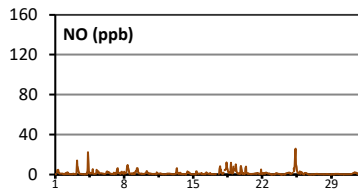
Wind Rose (km/hr)



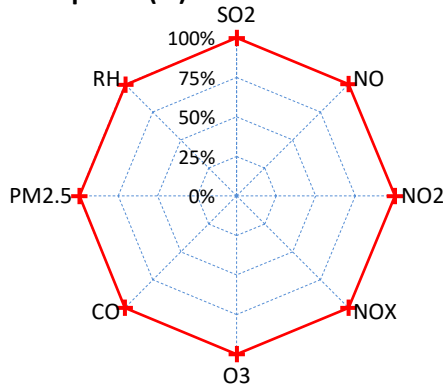
Palliser Airshed Society - October 2022 Summary Report

Continuous Sampling Results - Brooks

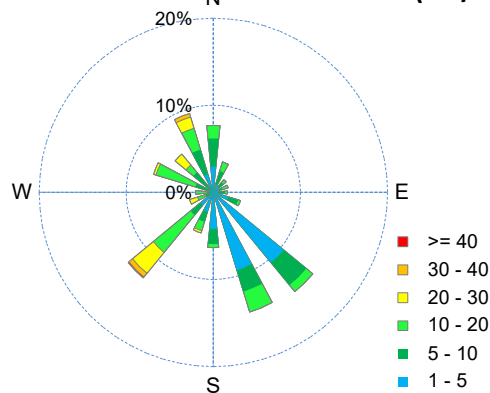
Pollutants		Month Records		24-Hour Records				1-Hour Records			
Name	Conc Unit	Avg. Conc.	Uptime	Maximum		AAAQO Objective	Exceed No.	Maximum		AAAQO Objective	Exceed No.
				Conc	Time			Conc	Time		
NO	ppb	1.3	100.0%	5.1	Oct-25	-	-	25.9	Oct-25 10:00	-	-
NO ₂	ppb	2.8	100.0%	8.8	Oct-18	-	-	23.8	Oct-17 18:00	159	0
NO _x	ppb	4.1	100.0%	12.8	Oct-18	-	-	38.1	Oct-25 10:00	-	-
O ₃	ppb	22	100.0%	35	Oct-28	-	-	52	Oct-03 16:00	76	0
PM _{2.5}	ug/m3	6	100.0%	16	Oct-19	29	0	32	Oct-05 1:00	80	0



Instrument Uptime (%)



Wind Rose (km/hr)



Monthly Update

*All data has been validated; data may change after validation process.

*The measured ambient concentrations of all parameters are within the AAAQO with the exception of a 24-hour PM_{2.5} exceedance recorded at Taber attributed to wildfire smoke in the area.

*All compliance parameters at Crescent Heights, Taber and Brooks had > 90% operational uptime with the exception of CO at Crescent Heights.