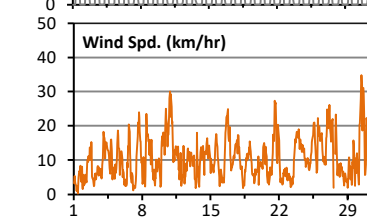
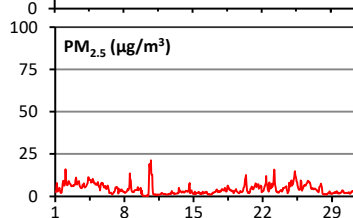
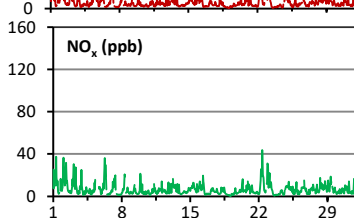
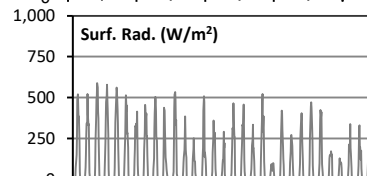
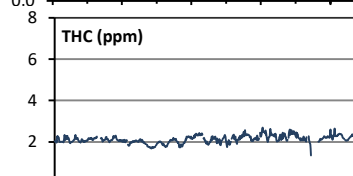
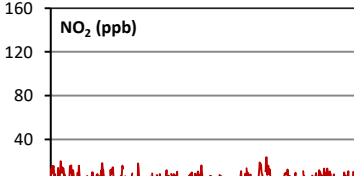
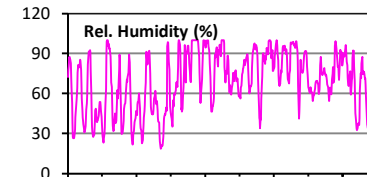
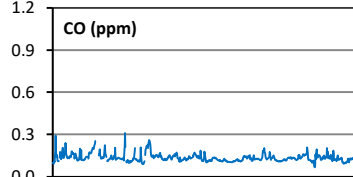
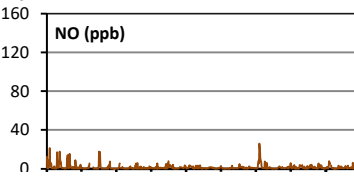
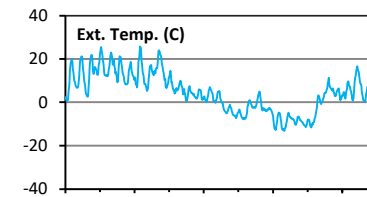
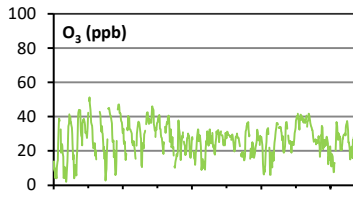
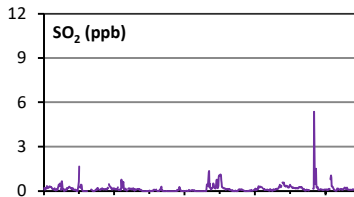
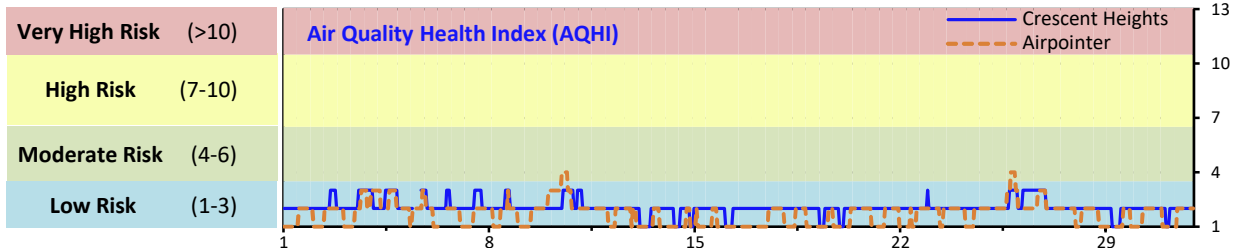


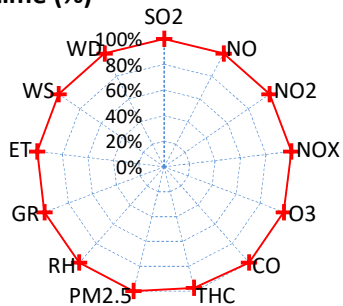
Palliser Airshed Society - October 2020 Summary Report

Continuous Sampling Results - Crescent Heights Station

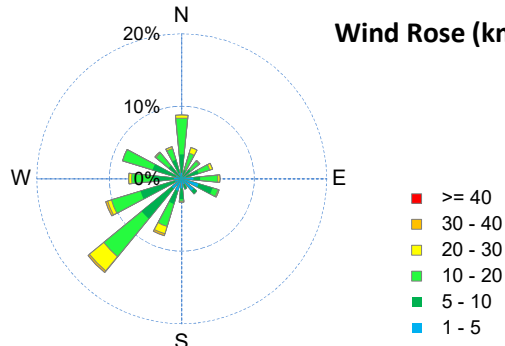
Pollutants		Month Records		24-Hour Records				1-Hour Records			
Name	Conc Unit	Avg. Conc.	Uptime	Maximum		AAAQO Objective	Exceed No.	Maximum		AAAQO Objective	Exceed No.
				Conc	Time			Conc	Time		
SO ₂	ppb	< 1	100.0%	1	Oct-18	48	0	5.4	Oct-27 22:00	172	0
NO	ppb	1.4	100.0%	5.0	Oct-22	-	-	26.1	Oct-22 9:00	-	-
NO ₂	ppb	5.1	100.0%	10.2	Oct-22	-	-	23.8	Oct-22 23:00	159	0
NO _x	ppb	6.5	100.0%	15.2	Oct-22	-	-	43.8	Oct-22 9:00	-	-
O ₃	ppb	27	100.0%	38	Oct-26	-	-	51	Oct-04 16:00	76	0
CO	ppm	0.1	100.0%	0.2	Oct-10	-	-	0.3	Oct-08 8:00	13	0
THC	ppm	2.1	97.4%	2.4	Oct-22	-	-	2.7	Oct-22 3:00	-	-
PM _{2.5}	µg/m ³	4	100.0%	8	Oct-4	29	0	21	Oct-10 17:00	80	0



Instrument Uptime (%)

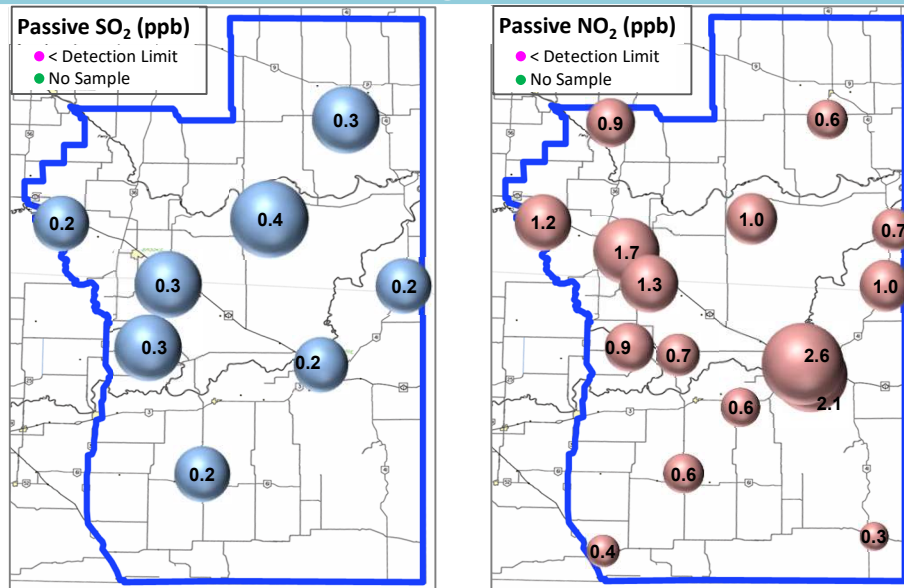


Wind Rose (km/hr)



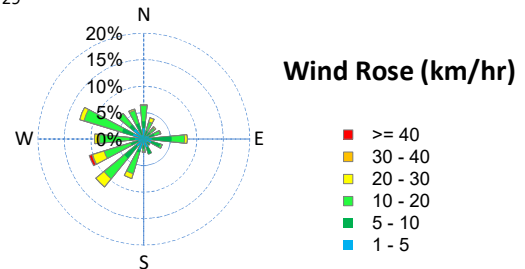
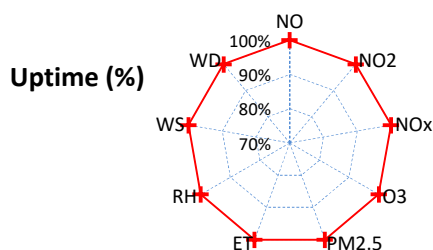
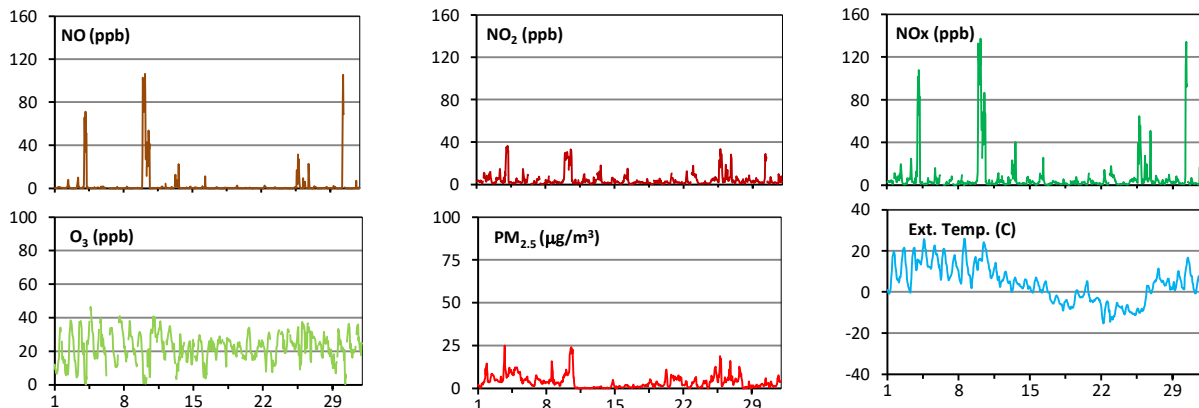
Palliser Airshed Society - October 2020 Summary Report

Passive Sampling Results



Continuous Sampling Results - Medicine Hat Trap Club

Pollutants	Conc Unit	Month Records		24-Hour Records				1-Hour Records			
		Avg. Conc.	Uptime	Maximum		AAAQO Objective	Exceed No.	Maximum		AAAQO Objective	Exceed No.
				Conc	Time			Conc	Time		
NO	ppb	2.8	100.0%	35.1	Oct-04	-	-	106.6	Oct-10 5:00	-	-
NO ₂	ppb	4.2	100.0%	17.7	Oct-10	-	-	36.4	Oct-04 4:00	159	0
NO _x	ppb	7.1	100.0%	52.8	Oct-10	-	-	137.3	Oct-10 5:00	-	-
O ₃	ppb	22	100.0%	31	Oct-11	-	-	46	Oct-04 16:00	76	0
PM _{2.5}	ug/m3	4	100.0%	12	Oct-10	29	0	25	Oct-03 18:00	80	0



Monthly Update

*All data has been validated; data may change after validation process.

*The measured ambient concentrations of all parameters are within the AAAQO with the exception of one 24-hour PM_{2.5} exceedance recorded at each station on Sept 19 due to wildfire smoke in the area.

*All compliance parameters had > 90% operational uptime.