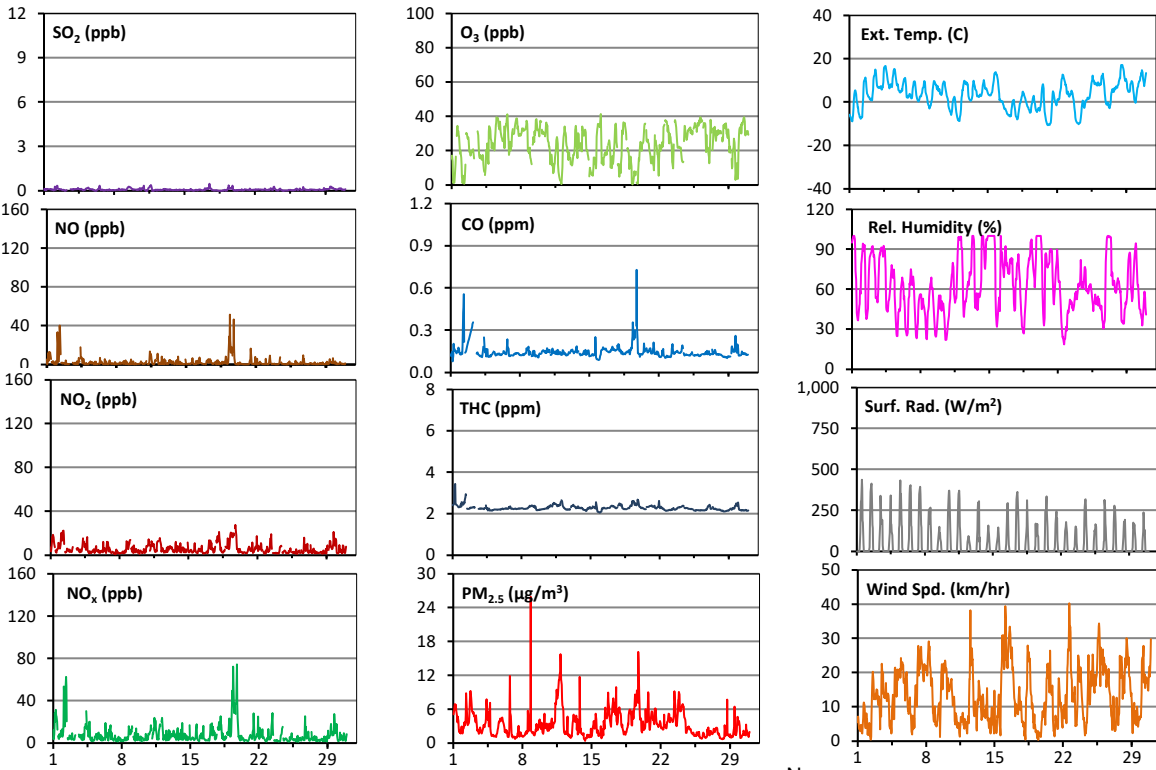
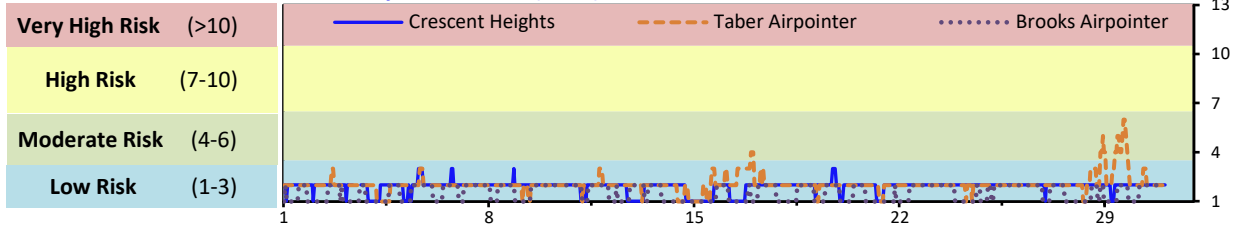


Palliser Airshed Society - November 2021 Summary Report

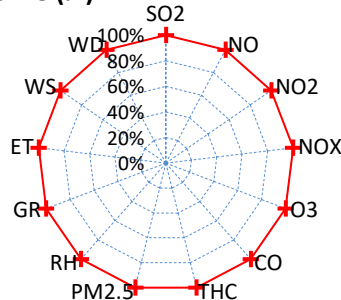
Continuous Sampling Results - Crescent Heights Station

Pollutants		Month Records		24-Hour Records				1-Hour Records			
Name	Conc Unit	Avg. Conc.	Uptime	Maximum		AAAQO Objective	Exceed No.	Maximum		AAAQO Objective	Exceed No.
				Conc	Time			Conc	Time		
SO ₂	ppb	< 1	100.0%	< 1	Nov-29	48	0	< 1	Nov-17 12:00	172	0
NO	ppb	2.1	100.0%	13.5	Nov-19	-	-	51.4	Nov-19 10:00	-	-
NO ₂	ppb	5.6	100.0%	15.5	Nov-19	-	-	27.7	Nov-19 19:00	159	0
NO _x	ppb	7.7	100.0%	29.0	Nov-19	-	-	74.5	Nov-19 19:00	-	-
O ₃	ppb	24	100.0%	33	Nov-25	-	-	41	Nov-16 3:00	76	10
CO	ppm	0.1	100.0%	0.2	Nov-19	-	-	0.7	Nov-19 19:00	13	0
THC	ppm	2.3	100.0%	2.5	Nov-1	-	-	3.4	Nov-01 7:00	-	-
PM _{2.5}	µg/m ³	3	100.0%	8	Nov-11	29	0	26	Nov-08 21:00	80	0

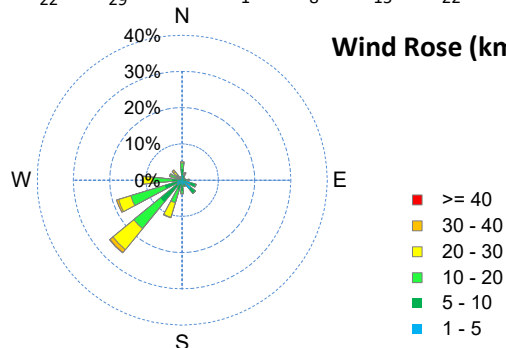
Air Quality Health Index (AQHI)



Instrument Uptime (%)

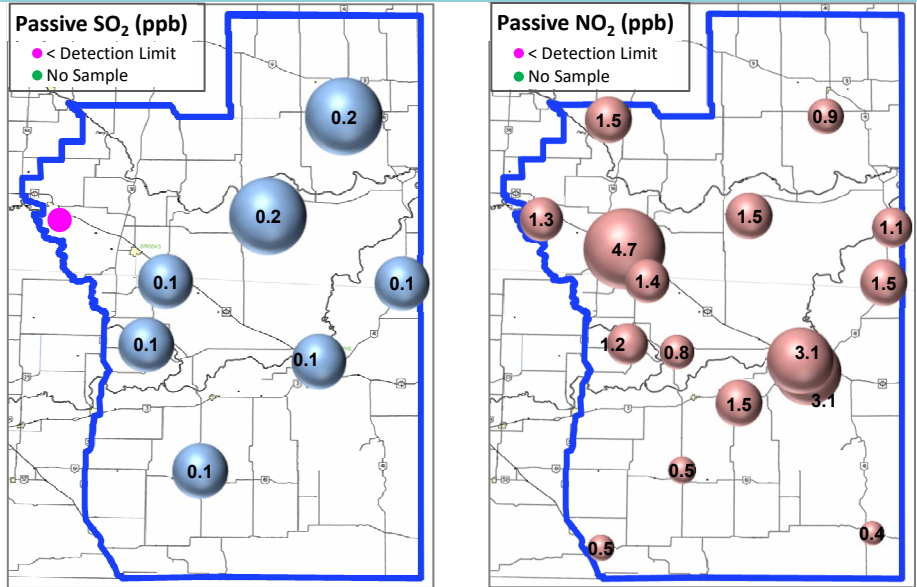


Wind Rose (km/hr)



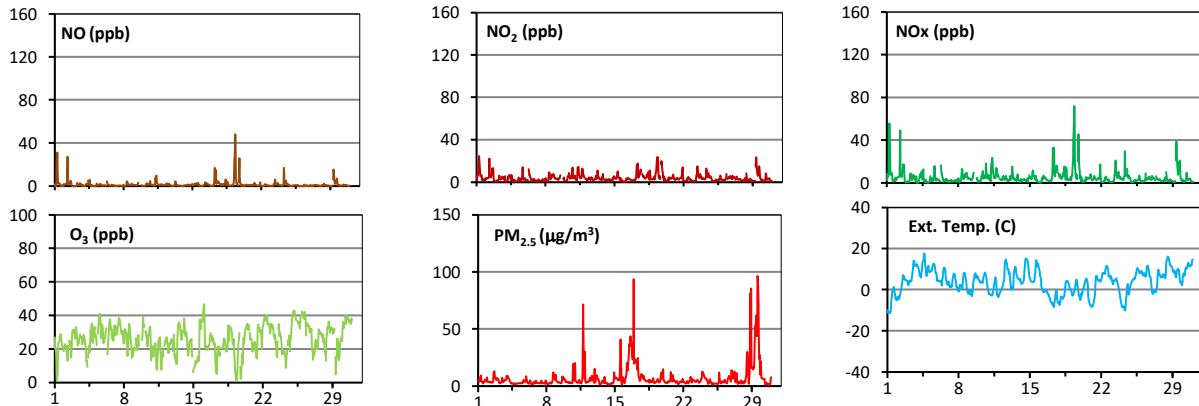
Palliser Airshed Society - November 2021 Summary Report

Passive Sampling Results

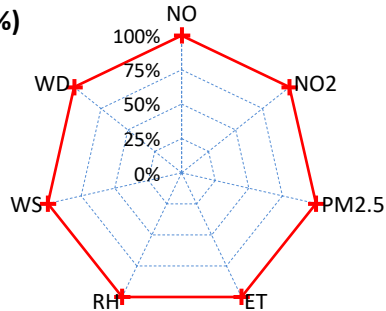


Continuous Sampling Results - Taber Airpointer

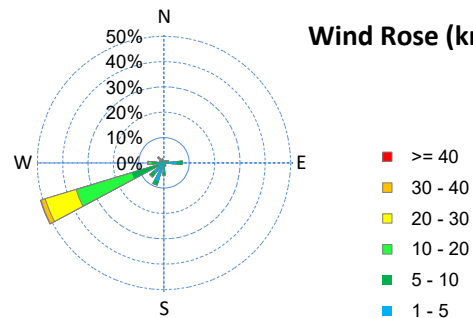
Pollutants	Conc Unit	Month Records		24-Hour Records				1-Hour Records			
		Avg. Conc.	Uptime	Maximum		AAAQO Objective	Exceed No.	Maximum		AAAQO Objective	Exceed No.
				Conc	Time			Conc	Time		
NO	ppb	1.4	100.0%	8.9	Nov-19	-	-	48.1	Nov-19 9:00	-	-
NO ₂	ppb	3.9	100.0%	10.3	Nov-19	-	-	24.5	Nov-01 7:00	159	0
NO _x	ppb	5.4	100.0%	19.2	Nov-19	-	-	71.8	Nov-19 9:00	-	-
O ₃	ppb	26	100.0%	39	Nov-25	-	-	47	Nov-16 2:00	76	0
PM _{2.5}	ug/m3	7	100.0%	37	Nov-29	29	1	96	Nov-29 15:00	80	5



Uptime (%)



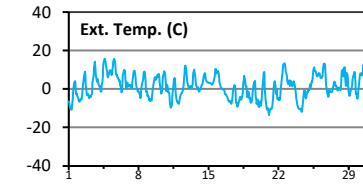
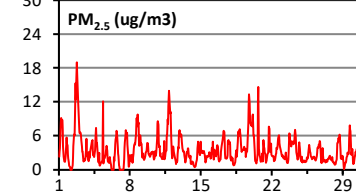
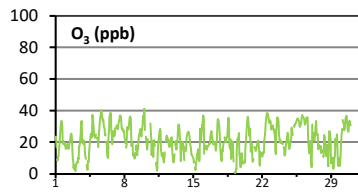
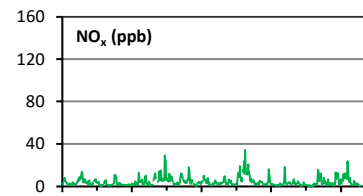
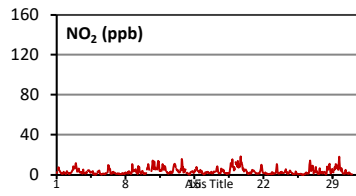
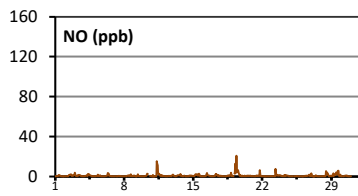
Wind Rose (km/hr)



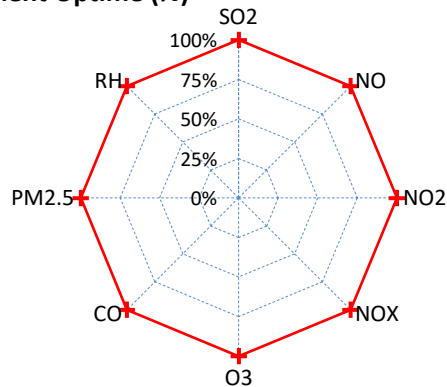
Palliser Airshed Society - November 2021 Summary Report

Continuous Sampling Results - Brooks

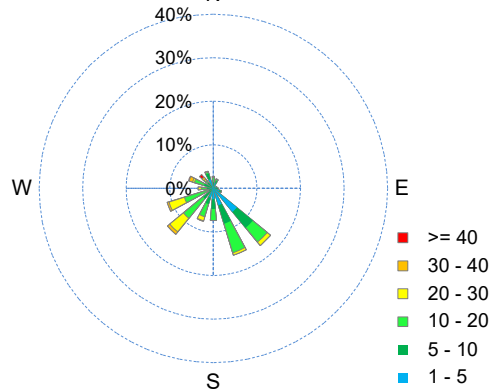
Pollutants		Month Records		24-Hour Records				1-Hour Records			
Name	Conc Unit	Avg. Conc.	Uptime	Maximum		AAAQO Objective	Exceed No.	Maximum		AAAQO Objective	Exceed No.
				Conc	Time			Conc	Time		
NO	ppb	0.8	100.0%	3.5	Nov-19	-	-	20.8	Nov-19 10:00	-	-
NO ₂	ppb	3.4	100.0%	9.3	Nov-19	-	-	18.6	Nov-19 17:00	159	0
NO _x	ppb	4.2	100.0%	12.7	Nov-19	-	-	34.5	Nov-19 10:00	-	-
O ₃	ppb	21	100.0%	32	Nov-25	-	-	41	Nov-10 1:00	76	0
PM _{2.5}	ug/m3	3	100.0%	7	Nov-2	29	0	19	Nov-02 19:00	80	0



Instrument Uptime (%)



Wind Rose (km/hr)



Monthly Update

*All data has been validated; data may change after validation process.

*The measured ambient concentrations of all parameters are within the AAAQO with the exception of one 24-hour and five 1-hour PM2.5 exceedances recorded at Taber.

*All compliance parameters had > 90% operational uptime.