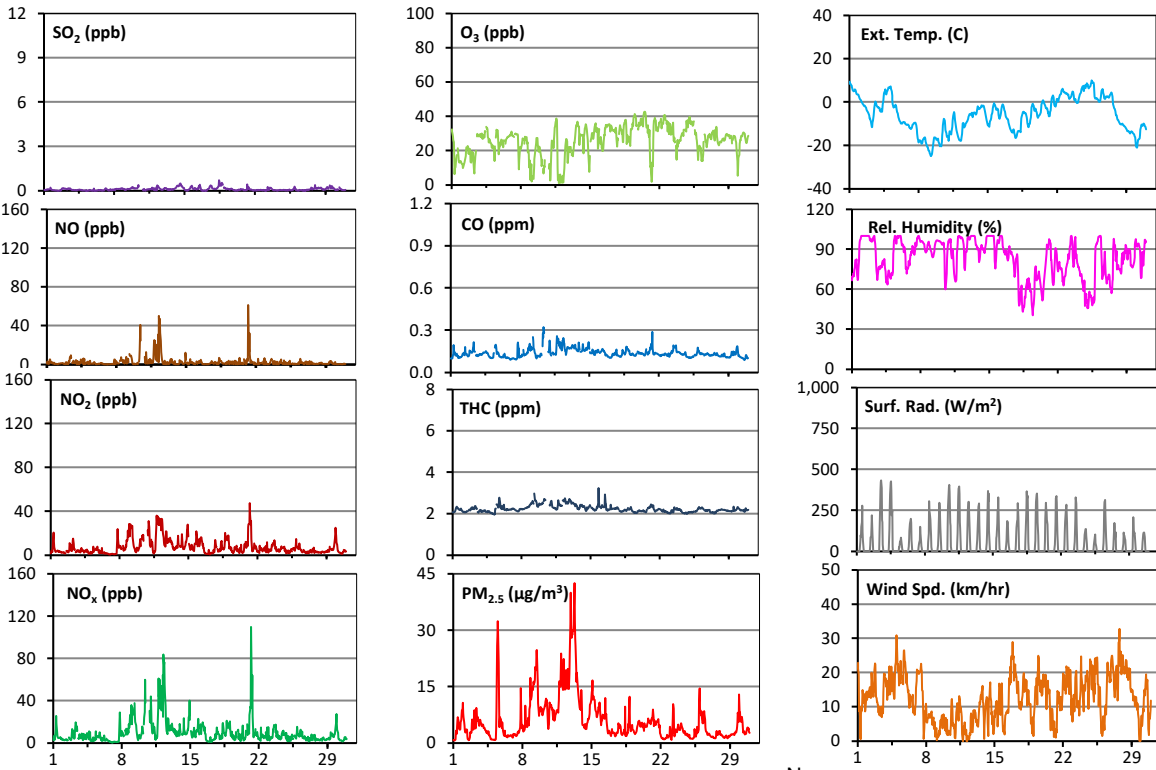
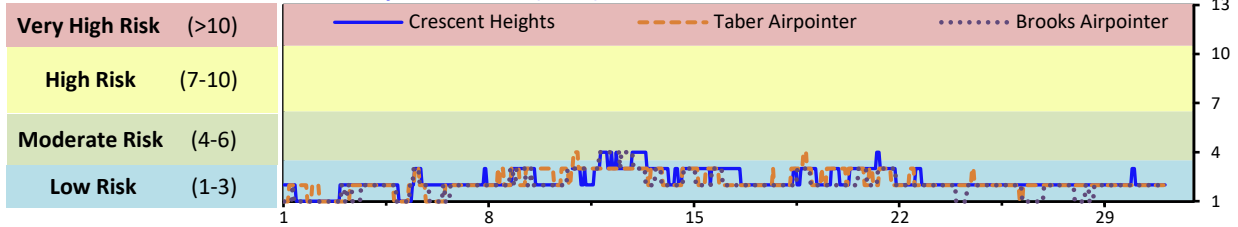


# Palliser Airshed Society - November 2022 Summary Report

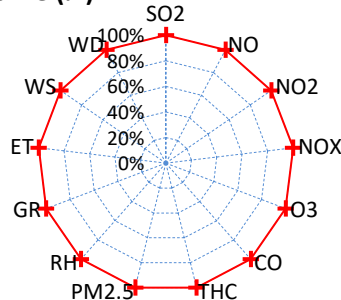
## Continuous Sampling Results - Crescent Heights Station

Pollutants		Month Records		24-Hour Records				1-Hour Records			
Name	Conc Unit	Avg. Conc.	Uptime	Maximum		AAAQO Objective	Exceed No.	Maximum		AAAQO Objective	Exceed No.
				Conc	Time			Conc	Time		
SO <sub>2</sub>	ppb	< 1	100.0%	< 1	Nov-18	48	0	1.0	Nov-18 11:00	172	0
NO	ppb	2.4	100.0%	13.4	Nov-12	-	-	61.5	Nov-21 6:00	-	-
NO <sub>2</sub>	ppb	7.2	100.0%	19.3	Nov-12	-	-	47.7	Nov-21 6:00	159	0
NO <sub>x</sub>	ppb	9.6	100.0%	32.8	Nov-12	-	-	109.7	Nov-21 6:00	-	-
O <sub>3</sub>	ppb	26	100.0%	37	Nov-22	-	-	43	Nov-20 12:00	76	0
CO	ppm	0.1	100.0%	0.2	Nov-12	-	-	0.3	Nov-10 10:00	13	0
THC	ppm	2.2	100.0%	2.6	Nov-12	-	-	3.2	Nov-15 20:00	-	-
PM <sub>2.5</sub>	µg/m <sup>3</sup>	6	100.0%	21	Nov-13	29	0	43	Nov-13 7:00	80	0

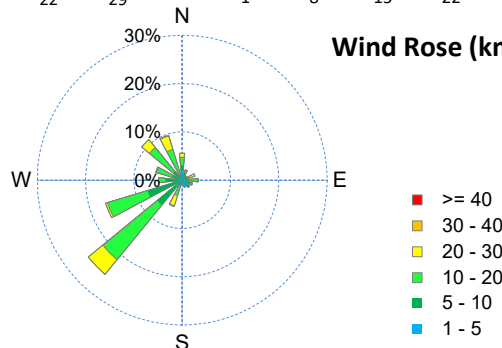
### Air Quality Health Index (AQHI)



### Instrument Uptime (%)

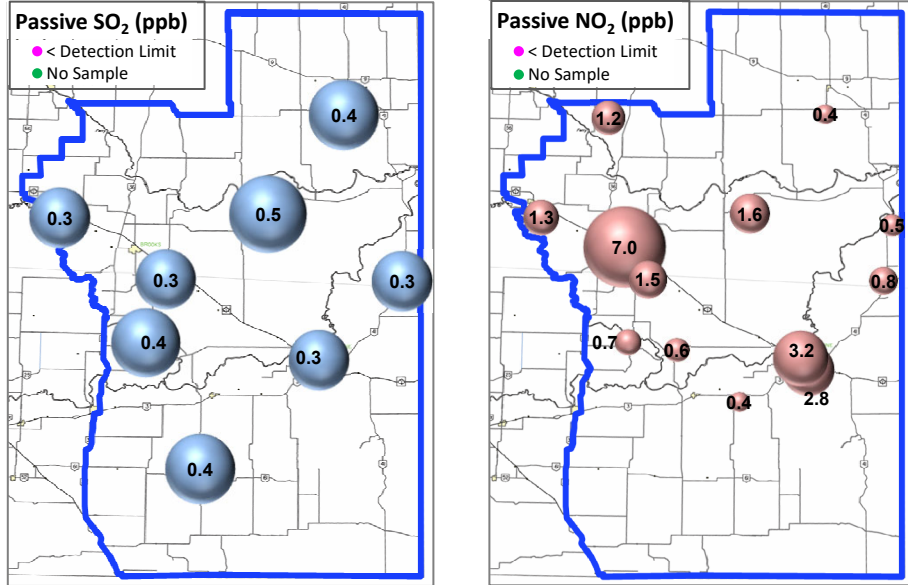


### Wind Rose (km/hr)



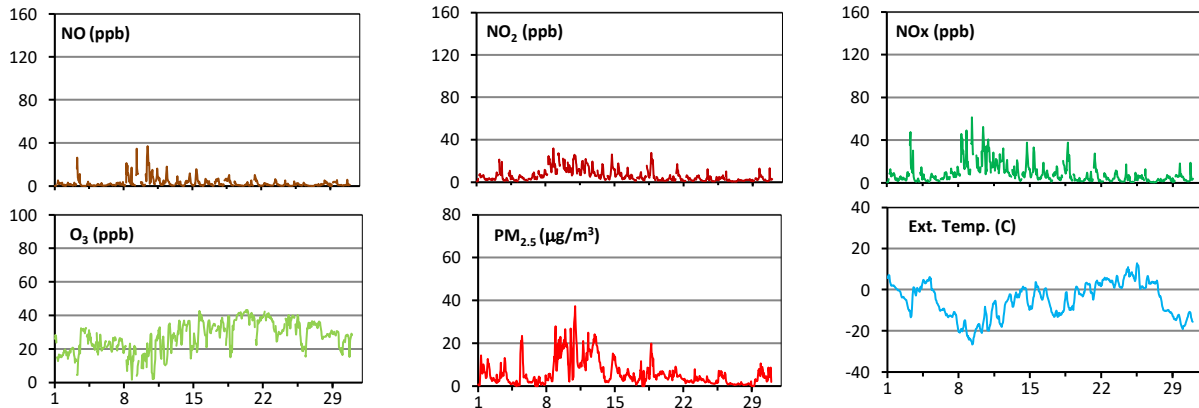
# Palliser Airshed Society - November 2022 Summary Report

## Passive Sampling Results

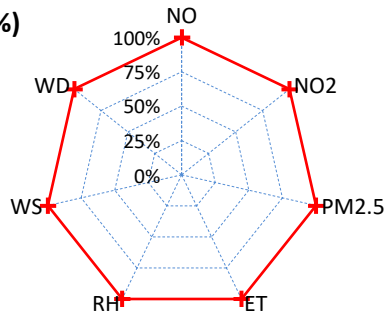


## Continuous Sampling Results - Taber Airpointer

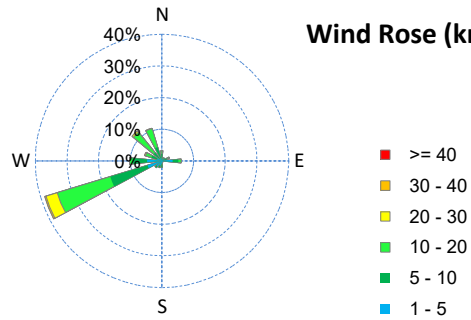
Pollutants	Conc Unit	Month Records		24-Hour Records				1-Hour Records			
		Avg. Conc.	Uptime	Maximum		AAAQO Objective	Exceed No.	Maximum		AAAQO Objective	Exceed No.
				Conc	Time			Conc	Time		
NO	ppb	2.6	100.0%	11.5	Nov-10	-	-	37.1	Nov-10 11:00	-	-
NO <sub>2</sub>	ppb	5.9	100.0%	15.7	Nov-8	-	-	31.8	Nov-08 20:00	159	0
NO <sub>x</sub>	ppb	8.4	100.0%	25.5	Nov-10	-	-	61.5	Nov-09 9:00	-	-
O <sub>3</sub>	ppb	27	100.0%	41	Nov-20	-	-	43	Nov-20 11:00	76	0
PM <sub>2.5</sub>	ug/m3	6	100.0%	17	Nov-12	29	0	37	Nov-10 23:00	80	0



### Uptime (%)



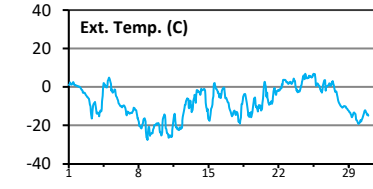
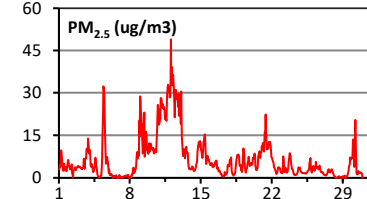
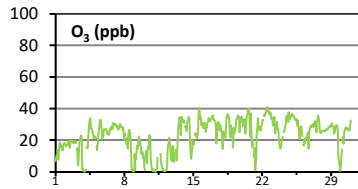
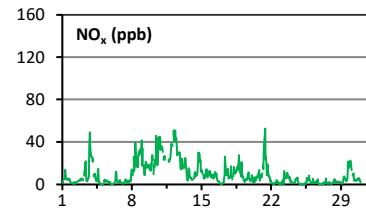
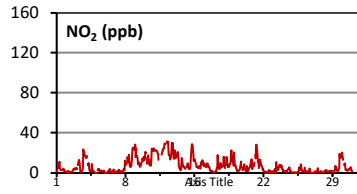
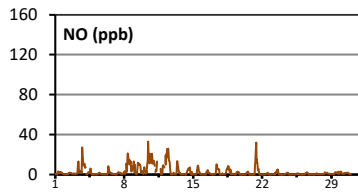
### Wind Rose (km/hr)



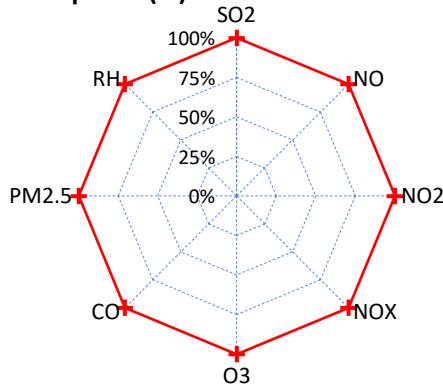
# Palliser Airshed Society - November 2022 Summary Report

## Continuous Sampling Results - Brooks

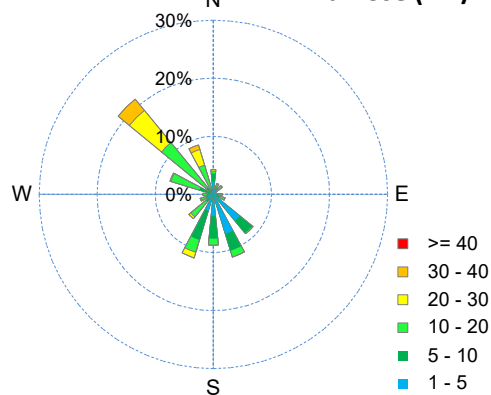
Pollutants		Month Records		24-Hour Records				1-Hour Records			
Name	Conc Unit	Avg. Conc.	Uptime	Maximum		AAAQO Objective	Exceed No.	Maximum		AAAQO Objective	Exceed No.
				Conc	Time			Conc	Time		
NO	ppb	2.7	100.0%	12.0	Nov-10	-	-	32.9	Nov-10 11:00	-	-
NO <sub>2</sub>	ppb	6.9	100.0%	23.0	Nov-12	-	-	31.1	Nov-12 7:00	159	0
NO <sub>x</sub>	ppb	9.5	100.0%	33.9	Nov-12	-	-	52.8	Nov-21 10:00	-	-
O <sub>3</sub>	ppb	23	100.0%	37	Nov-22	-	-	41	Nov-22 13:00	76	0
PM <sub>2.5</sub>	ug/m3	7	100.0%	30	Nov-12	29	1	49	Nov-12 2:00	80	0



Instrument Uptime (%)



Wind Rose (km/hr)



## Monthly Update

\*All data has been validated; data may change after validation process.

\*The measured ambient concentrations of all parameters are within the AAAQO with the exception of a 24-hour PM<sub>2.5</sub> exceedance recorded at Brooks attributed to a temperature inversion.

\*All compliance parameters at Crescent Heights, Taber and Brooks had > 90% operational uptime.