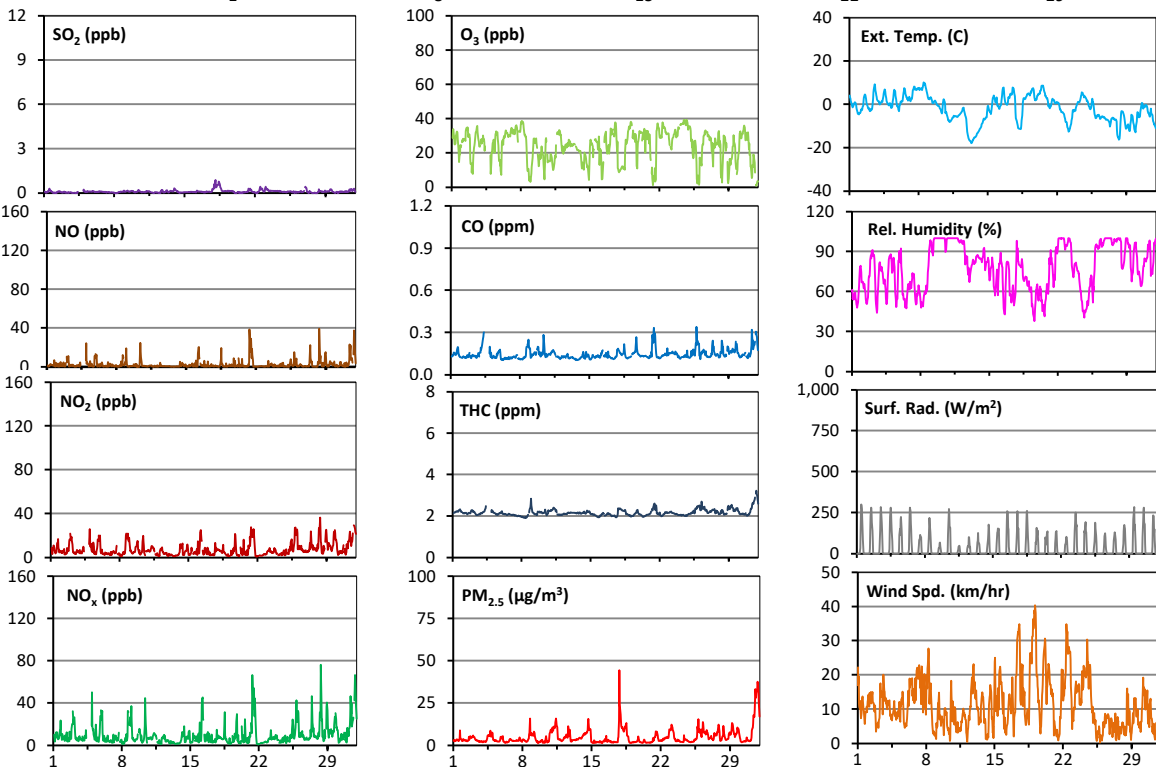
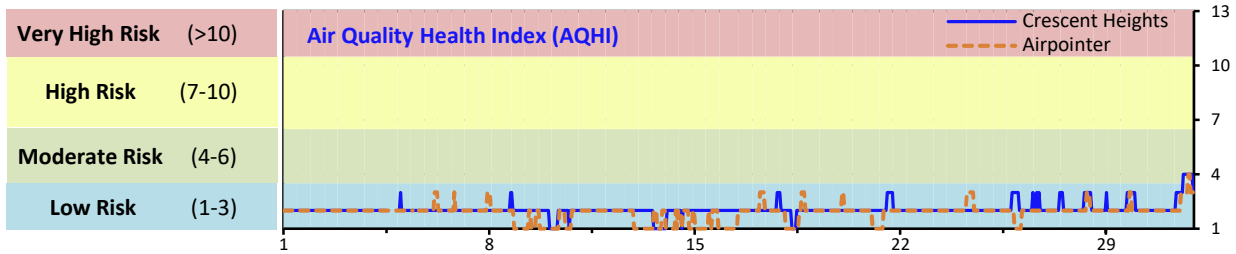


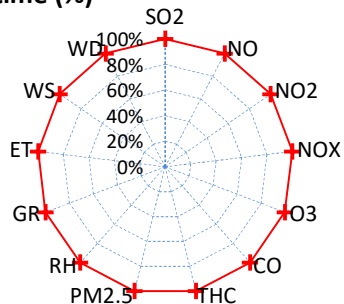
# Palliser Airshed Society - December 2020 Summary Report

## Continuous Sampling Results - Crescent Heights Station

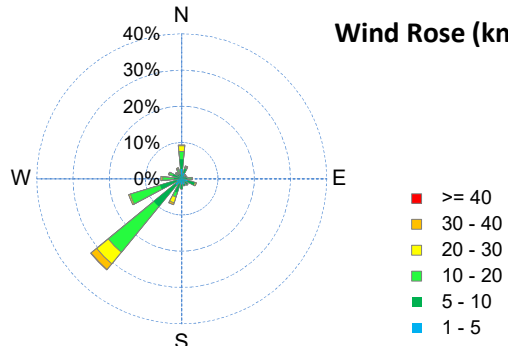
Pollutants		Month Records		24-Hour Records				1-Hour Records			
Name	Conc Unit	Avg. Conc.	Uptime	Maximum		AAAQO Objective	Exceed No.	Maximum		AAAQO Objective	Exceed No.
				Conc	Time			Conc	Time		
SO <sub>2</sub>	ppb	< 1	100.0%	< 1	Dec-18	48	0	1.0	Dec-18 2:00	172	0
NO	ppb	2.4	100.0%	9.8	Dec-31	-	-	39.3	Dec-28 9:00	-	-
NO <sub>2</sub>	ppb	7.2	100.0%	17.5	Dec-31	-	-	36.4	Dec-28 9:00	159	0
NO <sub>x</sub>	ppb	9.6	100.0%	27.4	Dec-31	-	-	76.1	Dec-28 9:00	-	-
O <sub>3</sub>	ppb	24	100.0%	37	Dec-24	-	-	39	Dec-24 13:00	76	0
CO	ppm	0.1	100.0%	0.2	Dec-31	-	-	0.3	Dec-25 20:00	13	0
THC	ppm	2.2	100.0%	2.6	Dec-31	-	-	3.2	Dec-31 20:00	-	-
PM <sub>2.5</sub>	µg/m <sup>3</sup>	5	100.0%	19	Dec-31	29	0	44	Dec-17 20:00	80	0



Instrument Uptime (%)

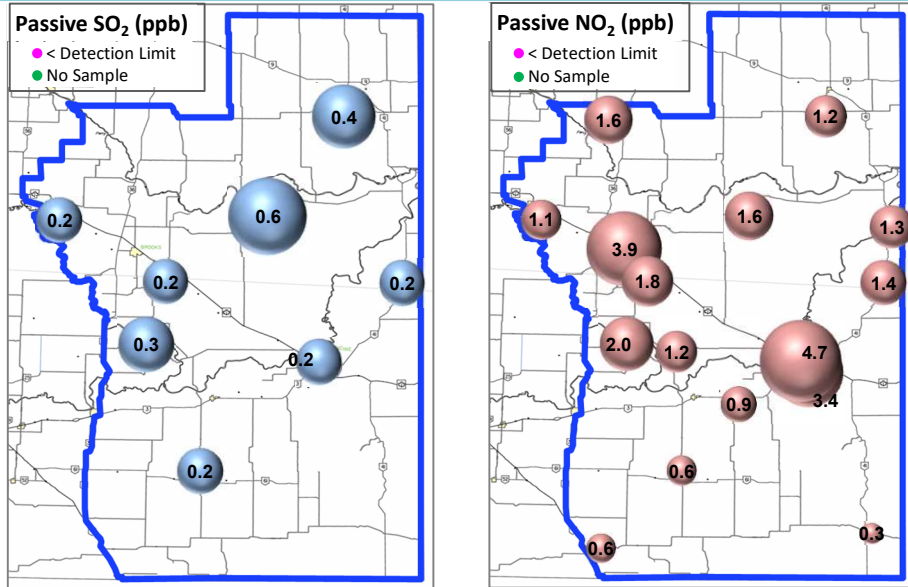


Wind Rose (km/hr)



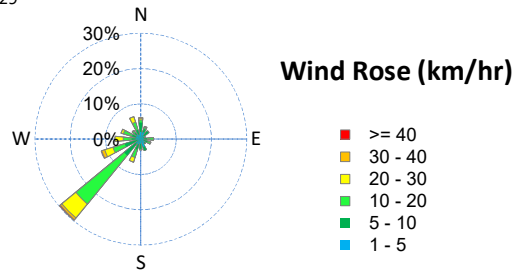
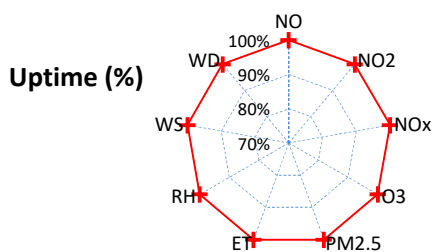
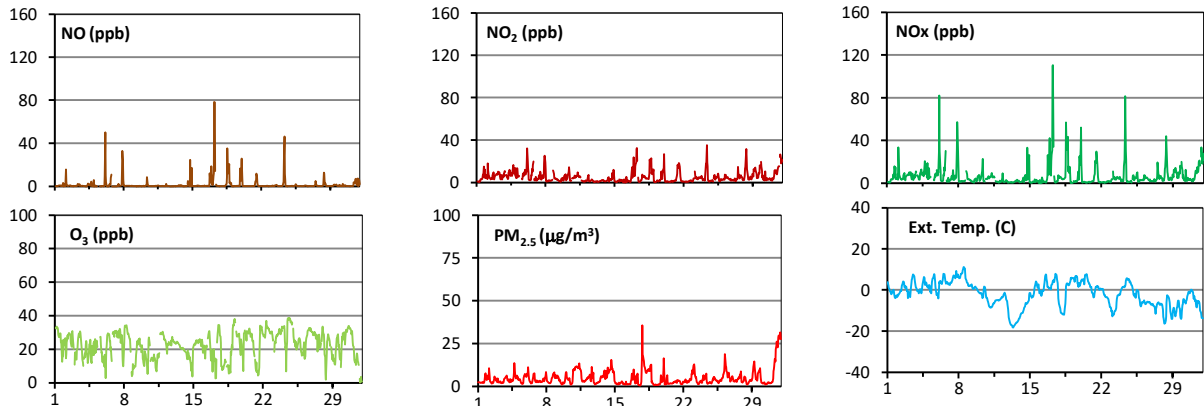
# Palliser Airshed Society - December 2020 Summary Report

## Passive Sampling Results



## Continuous Sampling Results - Medicine Hat Trap Club

Pollutants	Conc Unit	Month Records		24-Hour Records				1-Hour Records			
		Avg. Conc.	Uptime	Maximum		AAAQO Objective	Exceed No.	Maximum		AAAQO Objective	Exceed No.
				Conc	Time			Conc	Time		
NO	ppb	1.6	100.0%	9.2	Dec-17	-	-	78.4	Dec-17 6:00	-	-
NO <sub>2</sub>	ppb	5.3	100.0%	12.6	Dec-31	-	-	35.2	Dec-24 9:00	159	0
NO <sub>x</sub>	ppb	6.9	100.0%	18	Dec-17	-	-	110.7	Dec-17 7:00	-	-
O <sub>3</sub>	ppb	22	100.0%	32	Dec-24	-	-	39	Dec-24 17:00	76	0
PM <sub>2.5</sub>	ug/m3	5	100.0%	18	Dec-31	29	0	36	Dec-17 20:00	80	0



## Monthly Update

- \*All data has been validated; data may change after validation process.
- \*The measured ambient concentrations of all parameters are within the AAAQO.
- \*All compliance parameters had > 90% operational uptime.