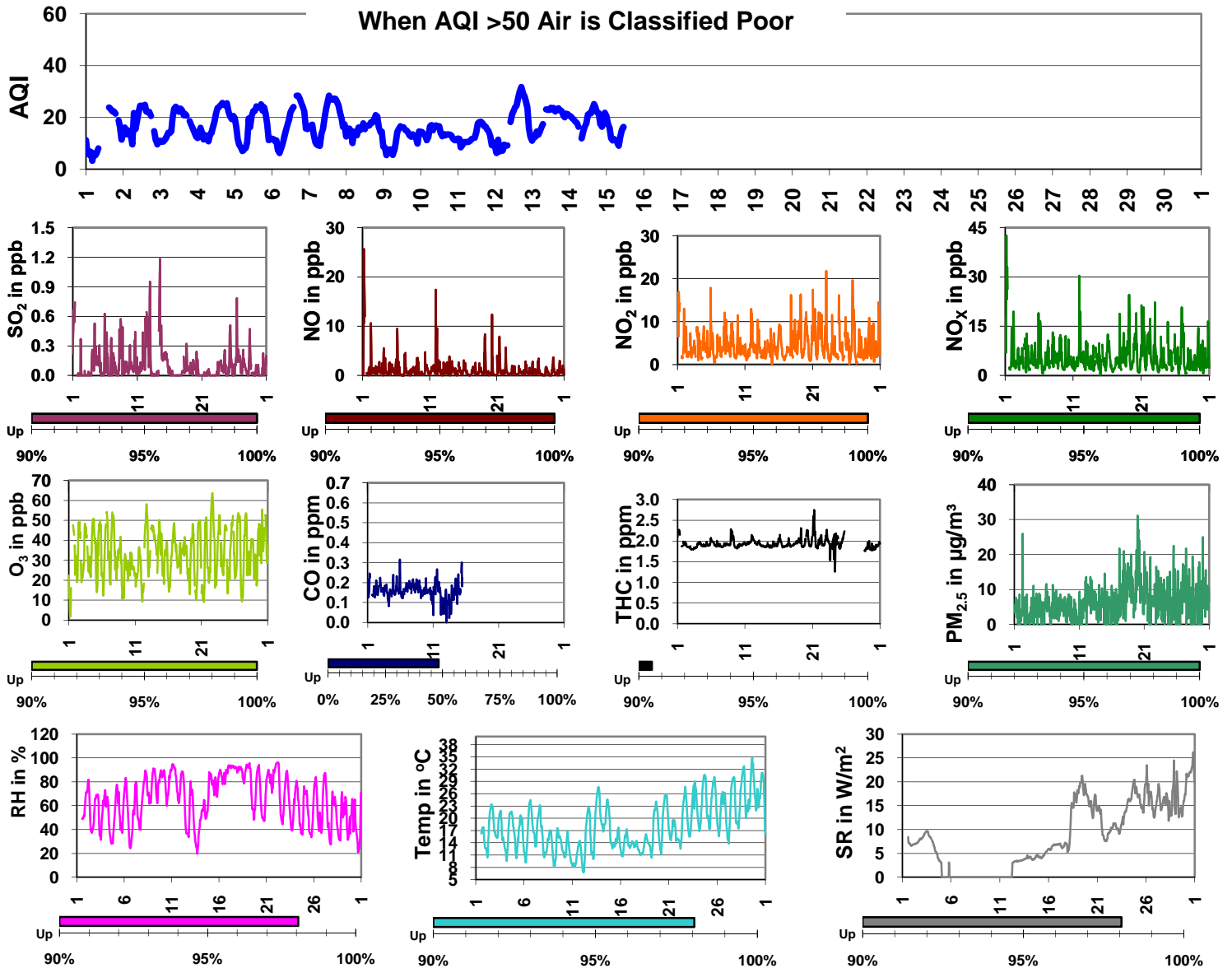


Palliser Airshed Society - June 2010 Summary Report

	Average	Uptime	1-hour			24-hour			Exceed	
			Max	Objective	Time	Max	Objective	Day	1hr	24hr
SO ₂ (ppb)	0.106	100.0%	1.2	172	Jun-14 12:00	0.4	57	Jun-12	0	0
NO (ppb)	1.1	100.0%	25.7	-	Jun-01 05:00	1.7	-	Jun-11	0	0
NO ₂ (ppb)	4.5	100.0%	21.8	212	Jun-23 01:00	7.0	106	Jun-21	0	0
NO _x (ppb)	5.5	100.0%	42.6	-	Jun-01 05:00	8.7	-	Jun-21	0	0
O ₃ (ppb)	33.2	100.0%	63.7	82	Jun-22 16:00	42.1	-	Jun-22	0	0
CO (ppm)	0.16	48.3%	0.32	13.0	Jun-05 22:00	0.19	-	Jun-11	0	0
THC (ppm)	1.93	90.6%	2.75	-	Jun-21 06:00	2.11	-	Jun-21	0	0
PM _{2.5} µg/m ³	6.6	100.0%	31.2	-	Jun-19 23:00	12.0	30	Jun-20	0	0

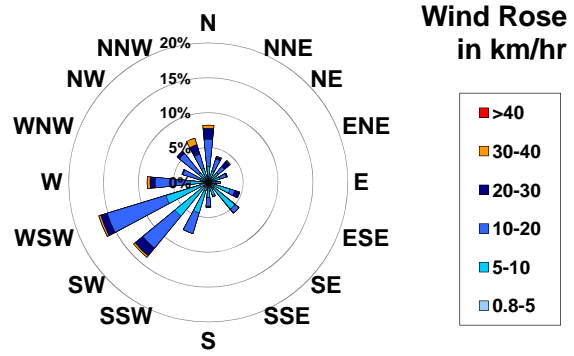
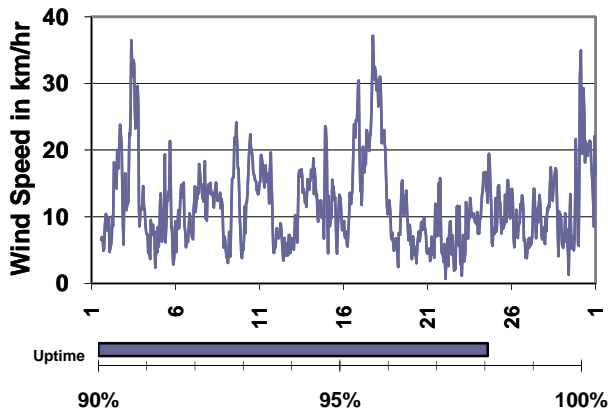


Update Summary

The meteorological data is available at the PAS website, www.palliserairshed.com

- The CO uptime was low due to instrumental problems, which affected the AQI calculations. The issue has been resolved.
- The SR displays a peculiar downward trend early in the month due to some missing data.

Palliser Airshed Society - June 2010 Summary Report

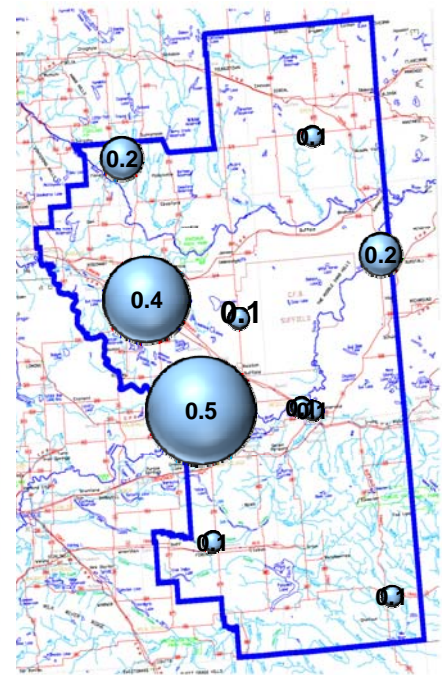
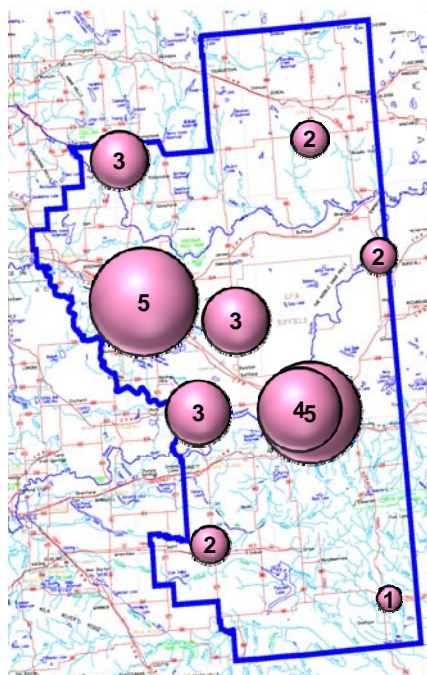
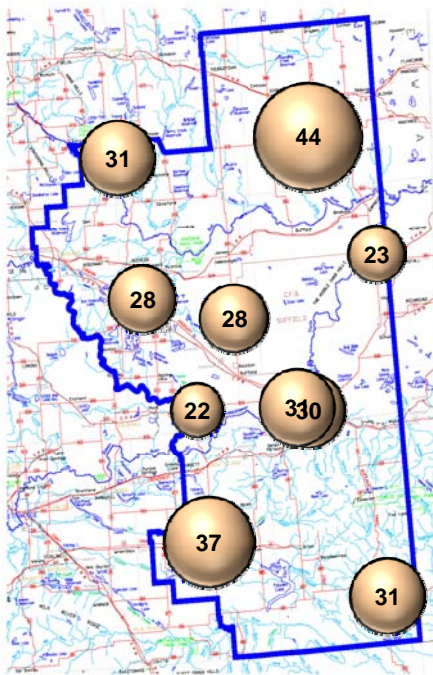


June 2010 - Passive Sampling Results throughout the PAS Zone

O3 Passives (in ppb)

NO2 Passives (in ppb)

SO2 Passives (in ppb)



No Rover Data.