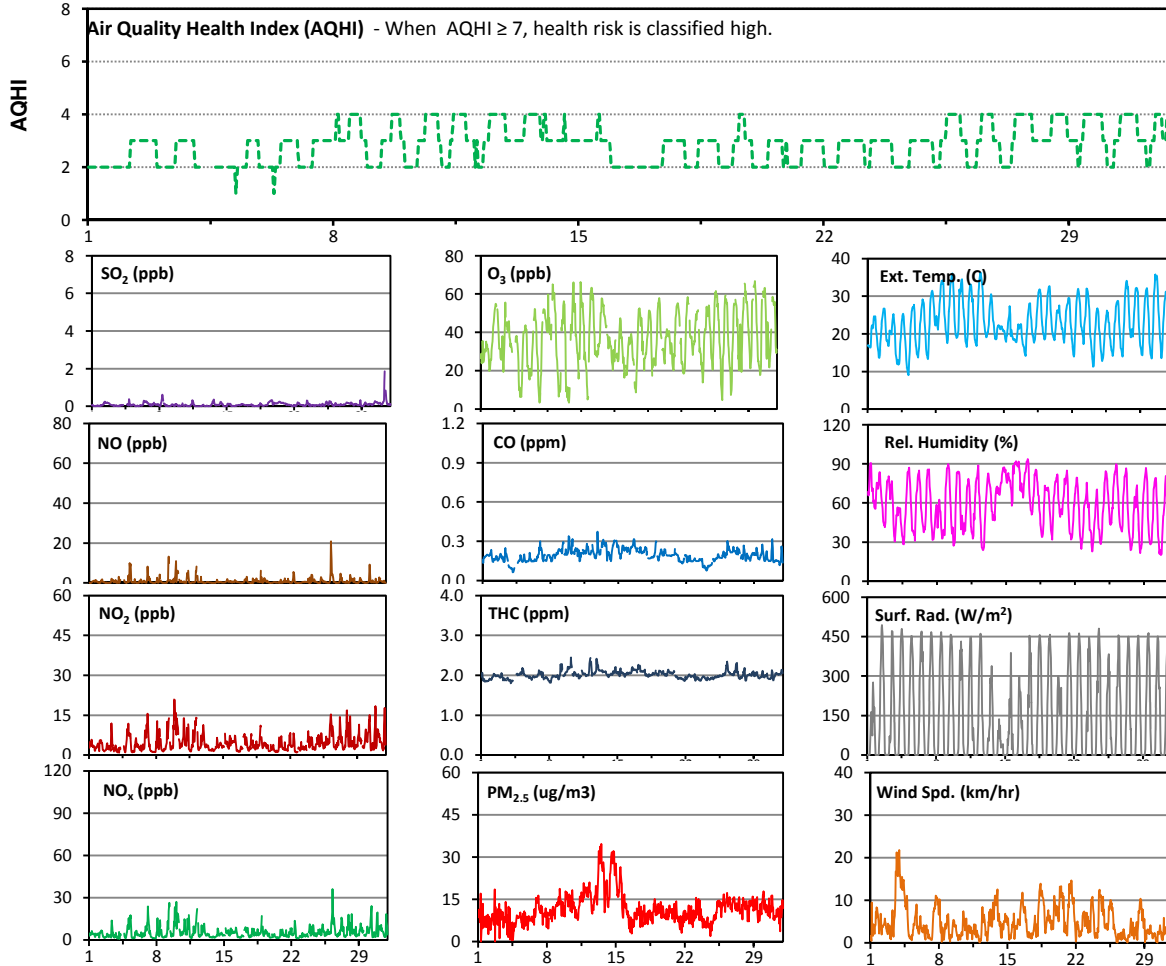


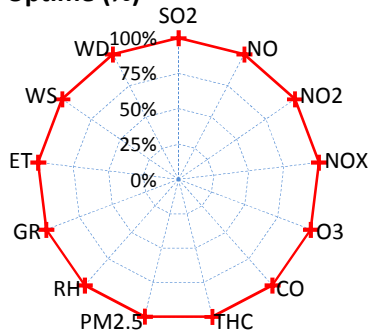
# Palliser Airshed Society - July 2012 Summary Report

## Continuous Sampling Results - Crescent Heights Station

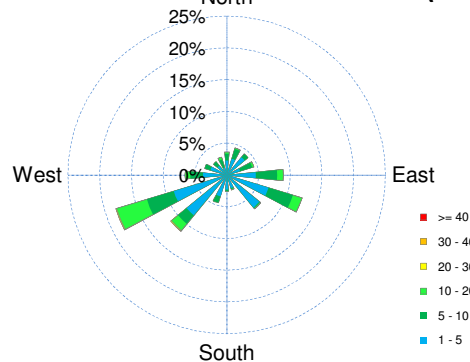
Pollutants		Month Records		24-Hour Records				1-Hour Records			
Name	Conc Unit	Avg. Conc.	Uptime	Maximum		AAAQO Objective	Exceed No.	Maximum		AAAQO Objective	Exceed No.
				Conc	Time			Conc	Time		
SO <sub>2</sub>	ppb	0.1	100.0%	0.3	Jul-31	48	0	1.9	Jul-31 10:00	172	0
NO	ppb	1	100.0%	3	Jul-26	-	-	21	Jul-26 7:00	-	-
NO <sub>2</sub>	ppb	5	100.0%	8	Jul-10	-	-	21	Jul-09 22:00	159	0
NO <sub>x</sub>	ppb	6	100.0%	10	Jul-10	-	-	36	Jul-26 7:00	-	-
O <sub>3</sub>	ppb	37	100.0%	47	Jul-8	-	-	67	Jul-29 17:00	82	0
CO	ppm	0.2	100.0%	0.3	Jul-16	-	-	0.4	Jul-12 21:00	13	0
THC	ppm	2.0	100.0%	2.2	Jul-12	-	-	2.4	Jul-10 6:00	-	-
PM <sub>2.5</sub>	µg/m <sup>3</sup>	11	99.9%	24	Jul-14	30	0	35	Jul-13 13:00	80	0



Instrument Uptime (%)

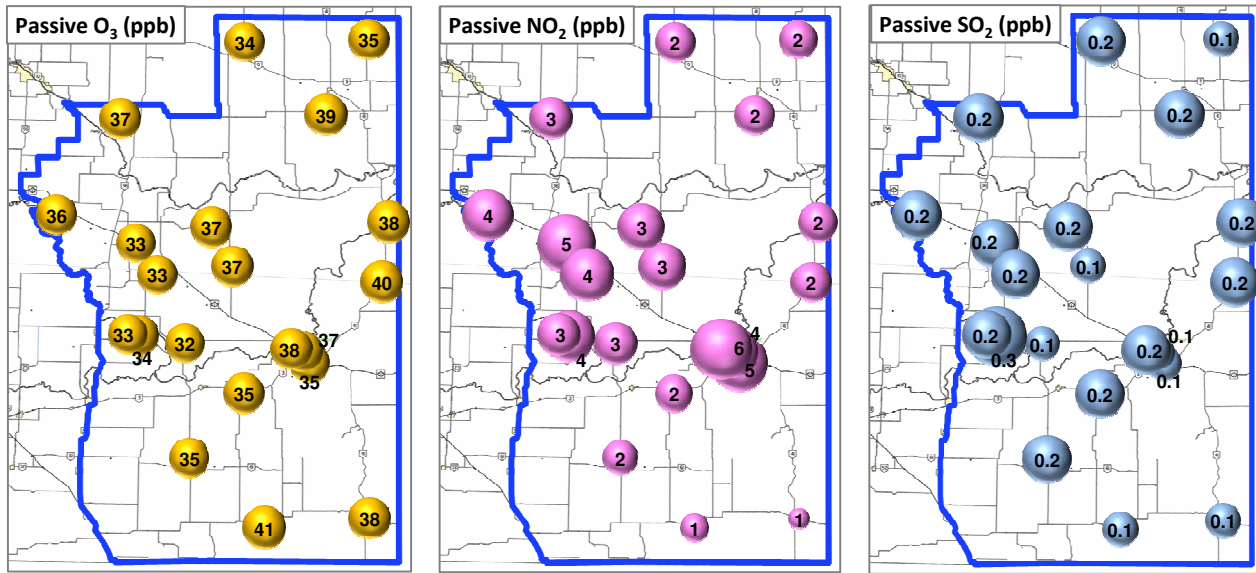


Wind Rose (km/hr)



# Palliser Airshed Society - July 2012 Summary Report

## Passive Sampling Results



## Monthly Update

- \* All data has been slope, intercept, and baseline corrected. Data may change after validation process.
- \* The measured ambient concentrations of all parameters are within the AAAQO for the month of July 2012.
- \* All compliance parameters are above 90% operational for the month of July 2012.
- \* Routine calibration was performed on July 4, 2012.
- \* The operational issues for the month of July include the PM<sub>2.5</sub> analyzer malfunctioning on July 8. One hour of data was flagged as "analyzer failure". AMEC is investigating the cause.
- \* Passive Samples were not recorded for Site 8 in July, as the filter was damaged.