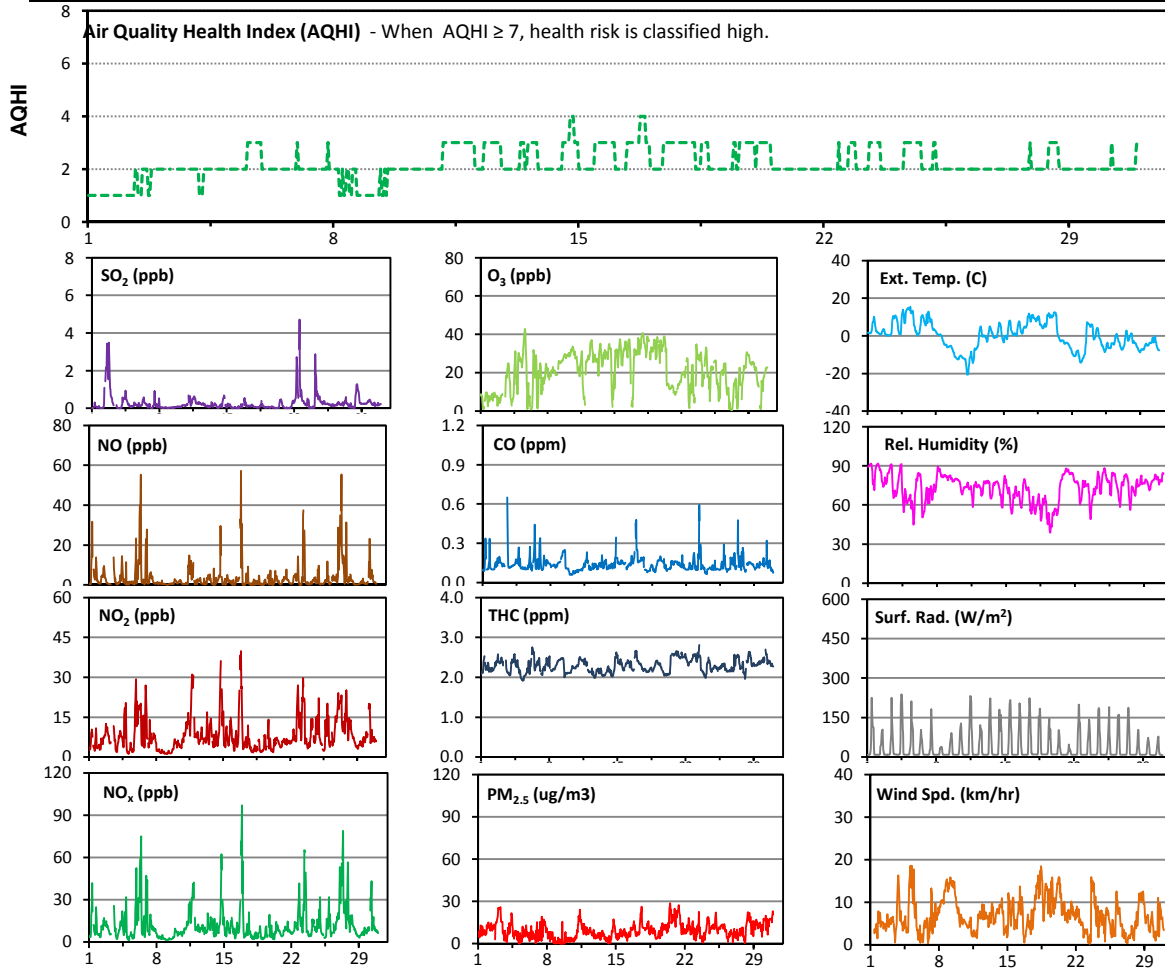


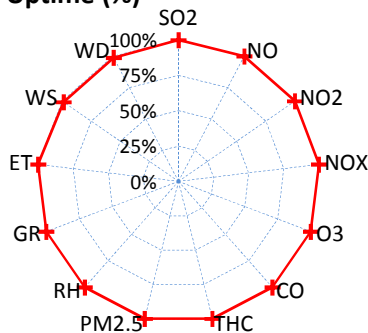
Palliser Airshed Society - November 2012 Summary Report

Continuous Sampling Results - Crescent Heights Station

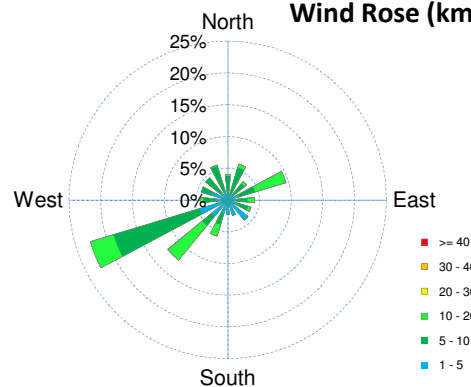
Pollutants		Month Records		24-Hour Records				1-Hour Records			
Name	Conc Unit	Avg. Conc.	Uptime	Maximum		AAAQO	Exceed	Maximum		AAAQO	Exceed
				Conc	Time	Objective	No.	Conc	Time	Objective	No.
SO ₂	ppb	0.3	100.0%	1.4	Nov-2	48	0	4.7	Nov-22 14:00	172	0
NO	ppb	3.6	100.0%	16.4	Nov-27	-	-	57.1	Nov-16 21:00	-	-
NO ₂	ppb	8.1	100.0%	16.8	Nov-27	-	-	39.8	Nov-16 21:00	159	0
NO _x	ppb	11.7	100.0%	33.4	Nov-27	-	-	97.1	Nov-16 21:00	-	-
O ₃	ppb	21	100.0%	34	Nov-17	-	-	43	Nov-05 15:00	82	0
CO	ppm	0.1	100.0%	0.2	Nov-16	-	-	0.7	Nov-03 14:00	13	0
THC	ppm	2.3	100.0%	2.6	Nov-21	-	-	2.8	Nov-23 10:00	-	-
PM _{2.5}	µg/m ³	9	100.0%	17	Nov-20	30	0	29	Nov-20 13:00	-	-



Instrument Uptime (%)

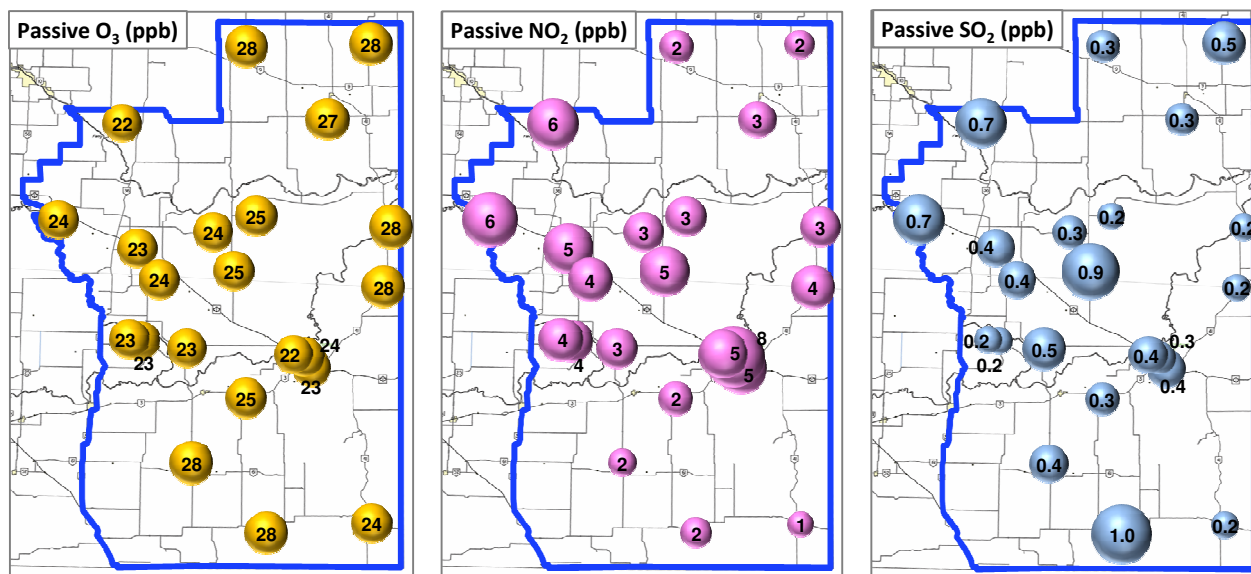


Wind Rose (km/hr)



Palliser Airshed Society - November 2012 Summary Report

Passive Sampling Results



Monthly Update

- * All data has been slope, intercept, and baseline corrected. Data may change after validation process.
- * The measured ambient concentrations of all parameters are within the AAAQO for the month of November 2012.
- * All compliance parameters are above 90% operational for the month of November 2012.
- * Routine calibration was performed on November 3, 2012.
- * The operational issues for the month of November include 9 hours of wind speed and direction data flagged as "analyzer failure" on November 1, due to an instrument malfunction likely caused by freezing rain in the region. The analyzer returned to normal operations on November 1.