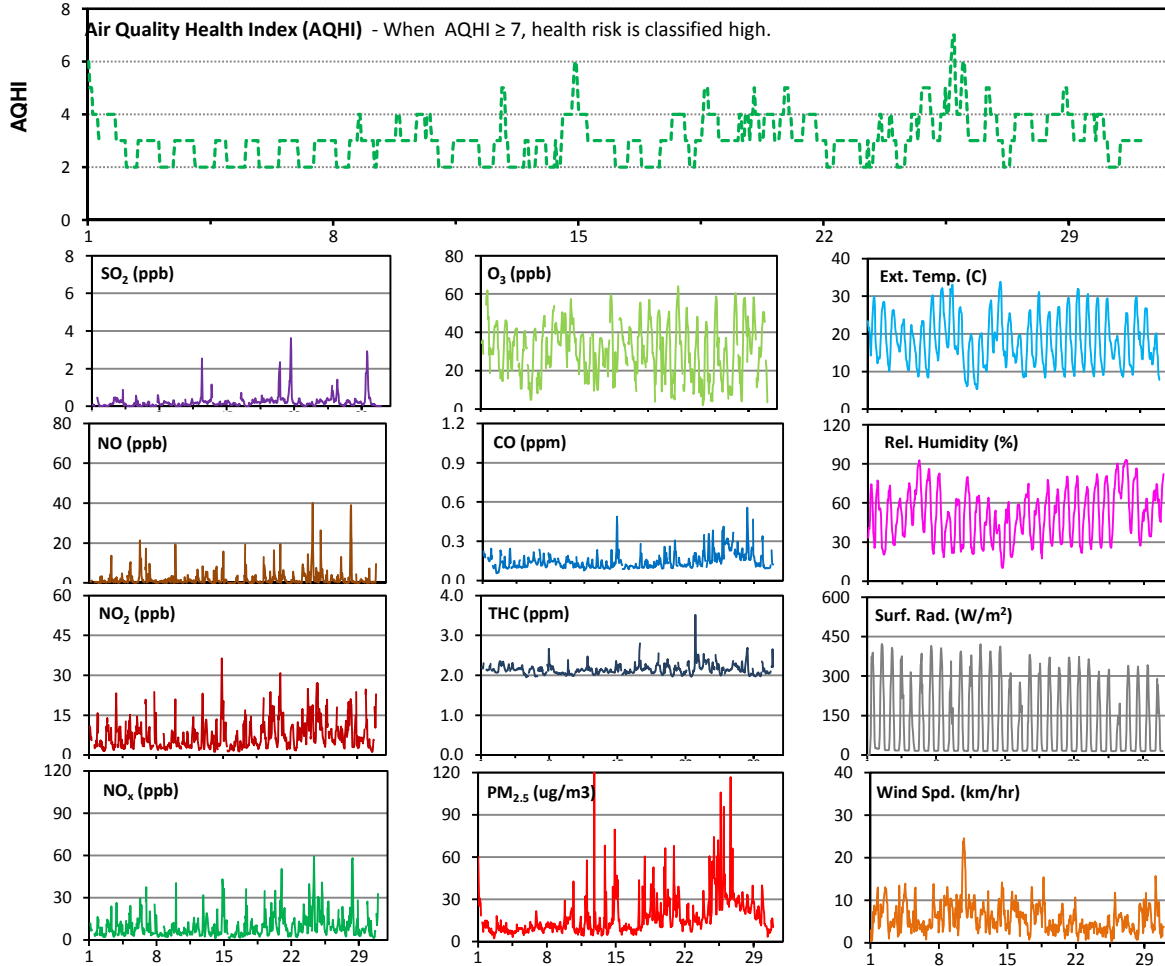


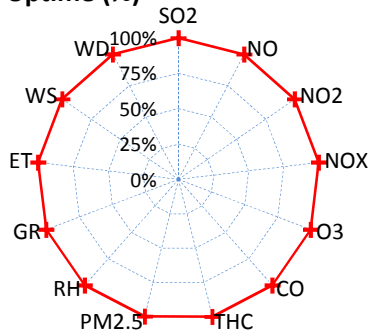
Palliser Airshed Society - September 2012 Summary Report

Continuous Sampling Results - Crescent Heights Station

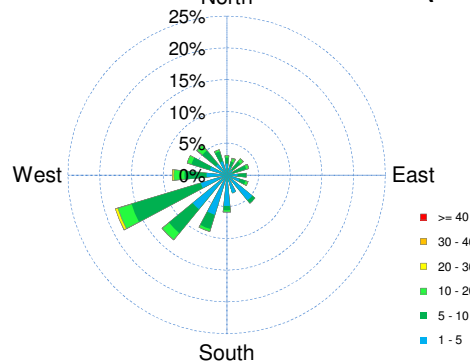
| Pollutants | | Month Records | | 24-Hour Records | | | | 1-Hour Records | | | |
|-------------------|-------------------|---------------|--------|-----------------|--------|-----------------|------------|----------------|--------------|-----------------|------------|
| Name | Conc Unit | Avg. Conc. | Uptime | Maximum | | AAAQO Objective | Exceed No. | Maximum | | AAAQO Objective | Exceed No. |
| | | | | Conc | Time | | | Conc | Time | | |
| SO ₂ | ppb | 0.2 | 100.0% | 0.8 | Sep-21 | 48 | 0 | 3.6 | Sep-21 16:00 | 172 | 0 |
| NO | ppb | 2 | 99.9% | 7 | Sep-24 | - | - | 40 | Sep-24 9:00 | - | - |
| NO ₂ | ppb | 7 | 99.9% | 14 | Sep-24 | - | - | 36 | Sep-14 21:00 | 159 | 0 |
| NO _x | ppb | 10 | 99.9% | 21 | Sep-24 | - | - | 59 | Sep-24 9:00 | - | - |
| O ₃ | ppb | 31 | 100.0% | 40 | Sep-9 | - | - | 64 | Sep-21 16:00 | 82 | 0 |
| CO | ppm | 0.1 | 100.0% | 0.3 | Sep-26 | - | - | 0.6 | Sep-28 8:00 | 13 | 0 |
| THC | ppm | 2.1 | 100.0% | 2.4 | Sep-23 | - | - | 3.5 | Sep-23 1:00 | - | - |
| PM _{2.5} | µg/m ³ | 18 | 99.7% | 45 | Sep-25 | 30 | 2 | 144 | Sep-12 20:00 | - | - |



Instrument Uptime (%)

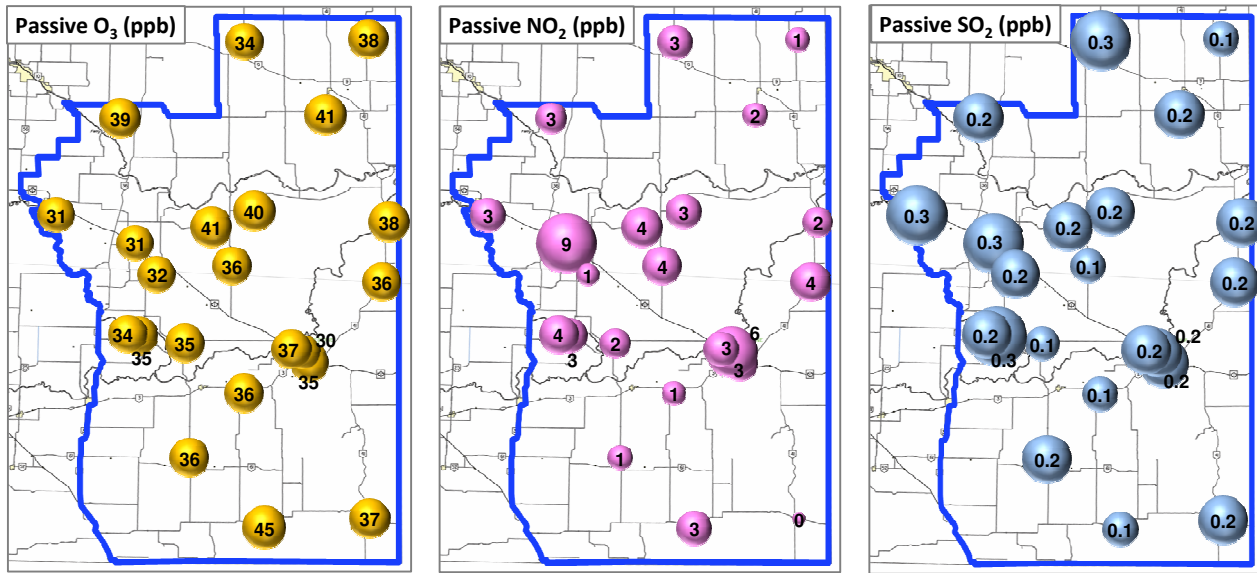


Wind Rose (km/hr)



Palliser Airshed Society - September 2012 Summary Report

Passive Sampling Results



Monthly Update

- * All data has been slope, intercept, and baseline corrected. Data may change after validation process.
- * The measured ambient concentrations of all parameters are within the AAAQO for the month of September 2012.
- * All compliance parameters are above 90% operational for the month of September 2012, with the exception of two 24-hour PM_{2.5} exceedance events. These high concentrations are attributed to smoke in the region, from forest fires in the US and AB. AESRD Reference number: 263591.
- * Routine calibration was performed on September 1, 2012.
- * The operational issues for the month of September include one hour of NO/NO₂/NO_x data flagged as "missing" on September 1. This hour of calibration data was lost for an unknown reason, AMEC will continue to observe the data logger program for similar issues in the future. 2 hours of PM_{2.5} data are flagged as "maintenance" while the filter was changed on the analyzer.