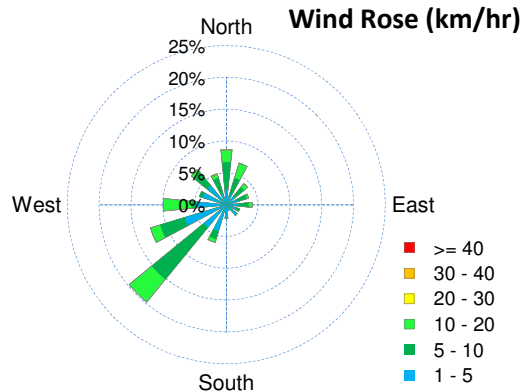
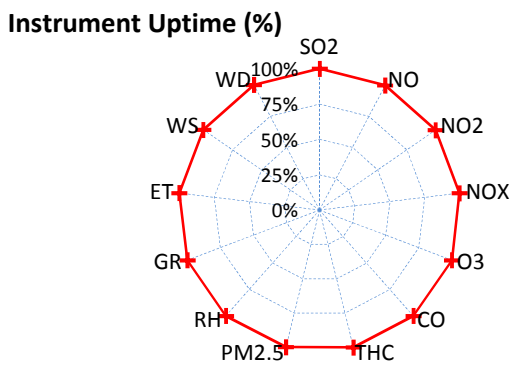
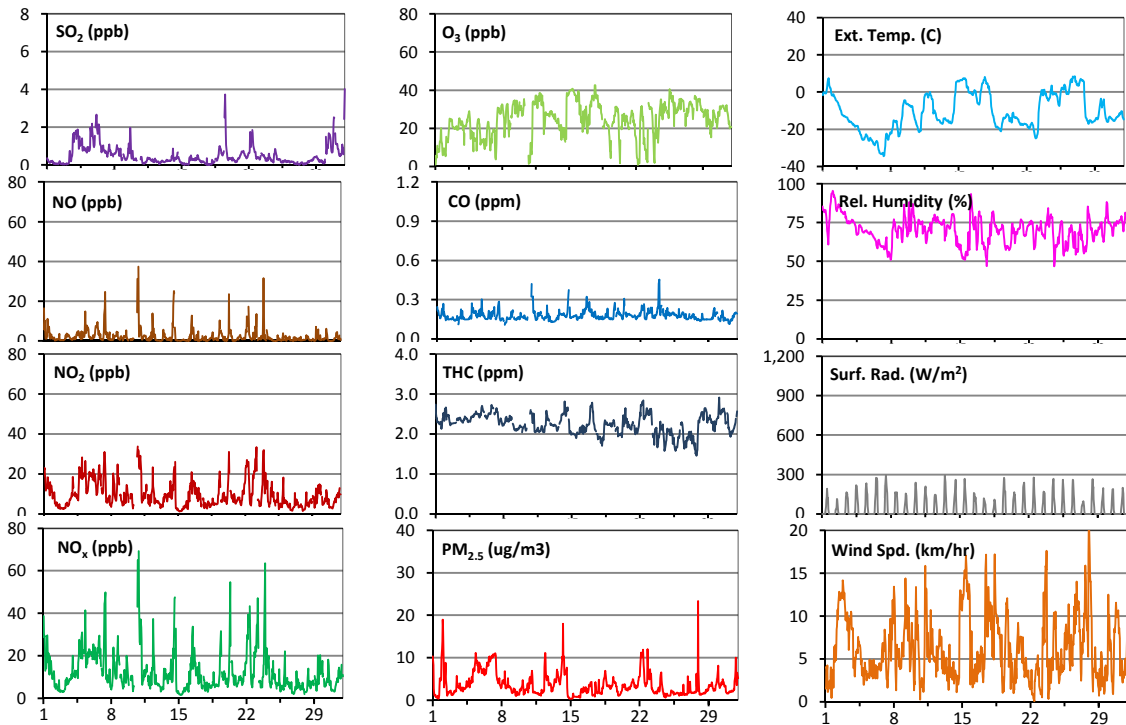
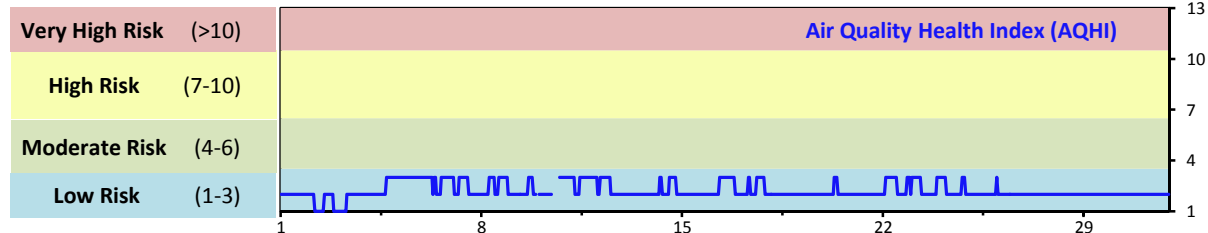


# Palliser Airshed Society - December 2013 Summary Report

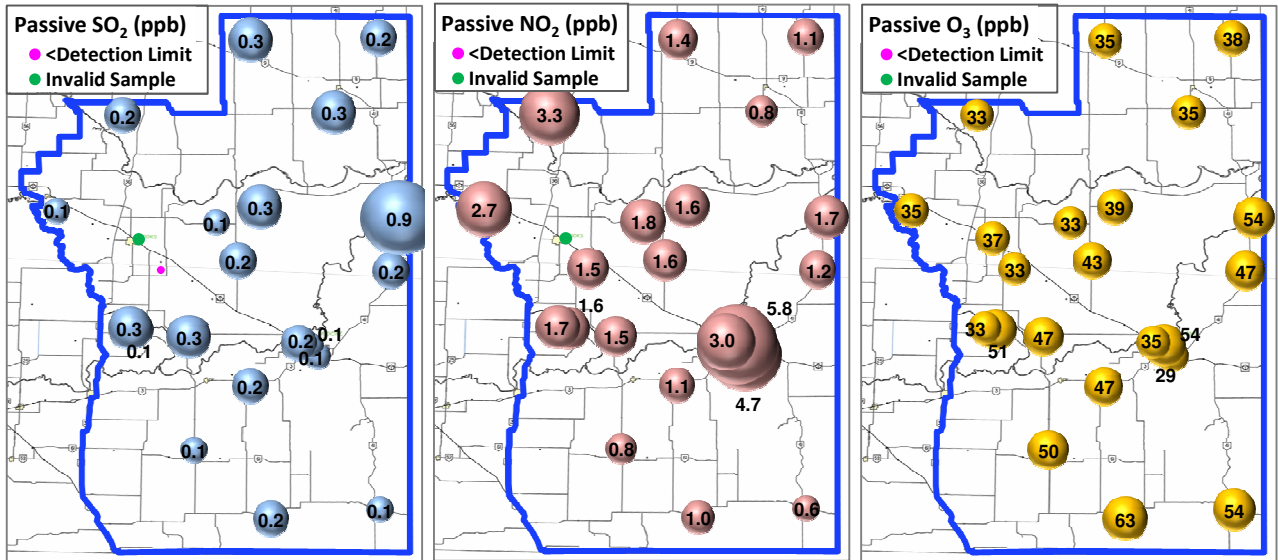
## Continuous Sampling Results - Crescent Heights Station

Pollutants	Month Records			24-Hour Records				1-Hour Records				
	Name	Conc Unit	Avg. Conc.	Uptime	Maximum		AAAQO Objective	Exceed No.	Maximum		AAAQO Objective	Exceed No.
					Conc	Time			Conc	Time		
SO <sub>2</sub>	ppb	0.5	100.0%	1.4	Dec-6	48	0	4	Jan-01 0:00	172	0	
NO	ppb	2.3	99.6%	4.9	Dec-23	-	-	37.5	Dec-10 21:00	-	-	
NO <sub>2</sub>	ppb	9.6	99.6%	17.7	Dec-5	-	-	33.8	Dec-10 19:00	159	0	
NO <sub>x</sub>	ppb	12	99.6%	21.7	Dec-5	-	-	69.2	Dec-10 21:00	-	-	
O <sub>3</sub>	ppb	25	100.0%	39	Dec-15	-	-	43	Dec-17 18:00	82	0	
CO	ppm	0.2	100.0%	0.2	Dec-16	-	-	0.5	Dec-23 23:00	13	0	
THC	ppm	2.2	100.0%	2.6	Dec-22	-	-	2.9	Dec-30 4:00	-	-	
PM <sub>2.5</sub>	µg/m <sup>3</sup>	4	99.7%	8	Dec-6	30	0	23	Dec-27 23:00	-	-	



# Palliser Airshed Society - December 2013 Summary Report

## Passive Sampling Results



## Monthly Update

- \* All data has been slope, intercept, and baseline corrected. Data may change after validation process.
- \* The measured ambient concentrations of all parameters are within the AAAQO for the month of December 2013.
- \* All compliance parameters are above 90% operational for the month of December 2013.
- \* Operational issues for the month of December include: 3 hours of NO/NO<sub>2</sub>/NO<sub>x</sub> data flagged as "analyzer failure" on Dec 9 due to abnormal data readings following an automatic instrument check. 2 hours of PM<sub>2.5</sub> data is flagged as "analyzer failure" on Dec 7, due to abnormal data readings.