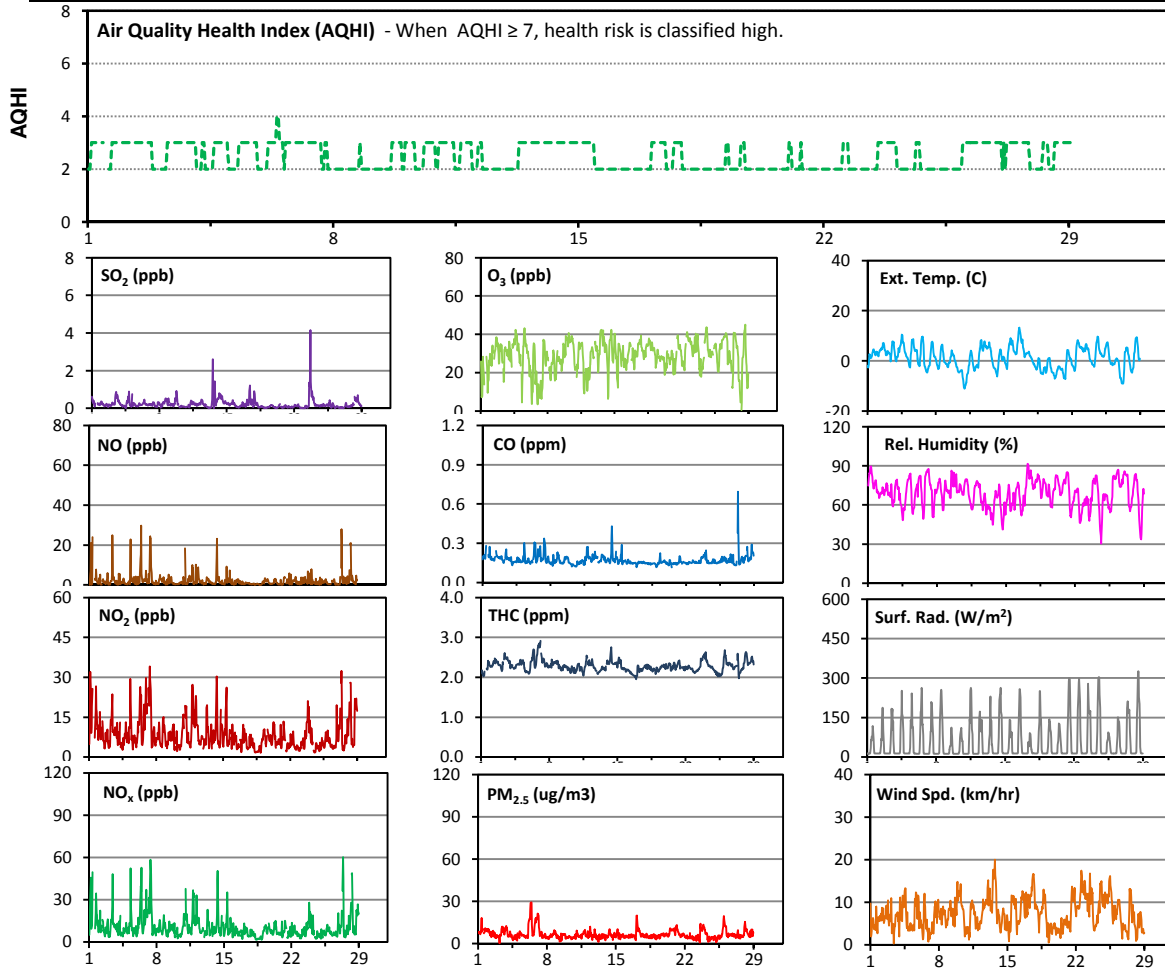


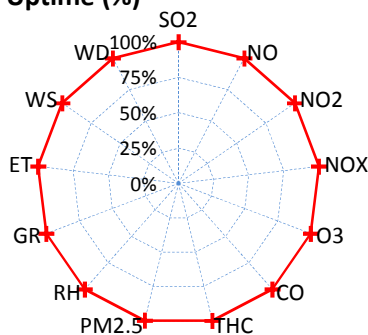
Palliser Airshed Society - February 2013 Summary Report

Continuous Sampling Results - Crescent Heights Station

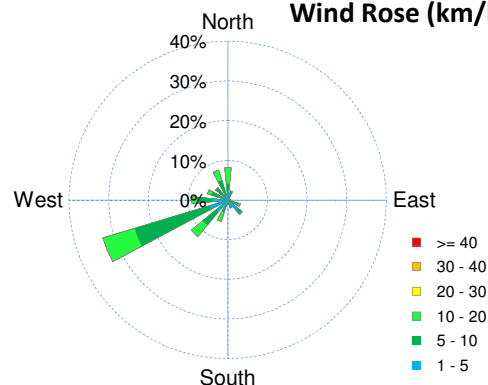
Pollutants		Month Records		24-Hour Records				1-Hour Records			
Name	Conc Unit	Avg. Conc.	Uptime	Maximum		AAAQO Objective	Exceed No.	Maximum		AAAQO Objective	Exceed No.
				Conc	Time			Conc	Time		
SO ₂	ppb	0.2	100.0%	0.6	Feb-23	48	0	4.2	Feb-23 17:00	172	0
NO	ppb	2.2	100.0%	5.0	Feb-7	-	-	29.7	Feb-06 11:00	-	-
NO ₂	ppb	8.4	100.0%	15.8	Feb-1	-	-	34.0	Feb-07 9:00	159	0
NO _x	ppb	10.6	100.0%	20.3	Feb-1	-	-	60.2	Feb-27 9:00	-	-
O ₃	ppb	29	100.0%	35	Feb-26	-	-	45	Feb-28 17:00	82	0
CO	ppm	0.2	100.0%	0.2	Feb-6	-	-	0.7	Feb-27 9:00	13	0
THC	ppm	2.3	100.0%	2.5	Feb-6	-	-	2.9	Feb-07 3:00	-	-
PM _{2.5}	µg/m ³	7	99.9%	15	Feb-6	30	0	29	Feb-06 10:00	-	-



Instrument Uptime (%)

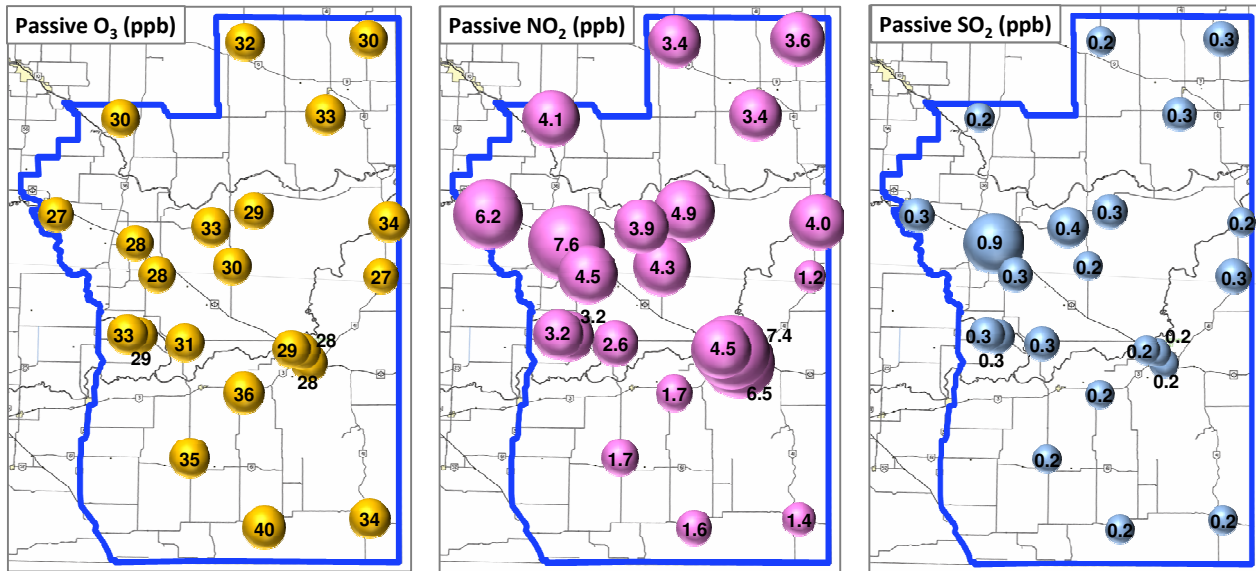


Wind Rose (km/hr)



Palliser Airshed Society - February 2013 Summary Report

Passive Sampling Results



Monthly Update

- * All data has been slope, intercept, and baseline corrected. Data may change after validation process.
- * The measured ambient concentrations of all parameters are within the AAAQO for the month of February 2013.
- * All compliance parameters are above 90% operational for the month of February 2013.
- * Routine calibration was performed on February 1, 2013.
- * The operational issues for the month of February include 1 hour of PM_{2.5} data flagged as maintenance during the filter change.