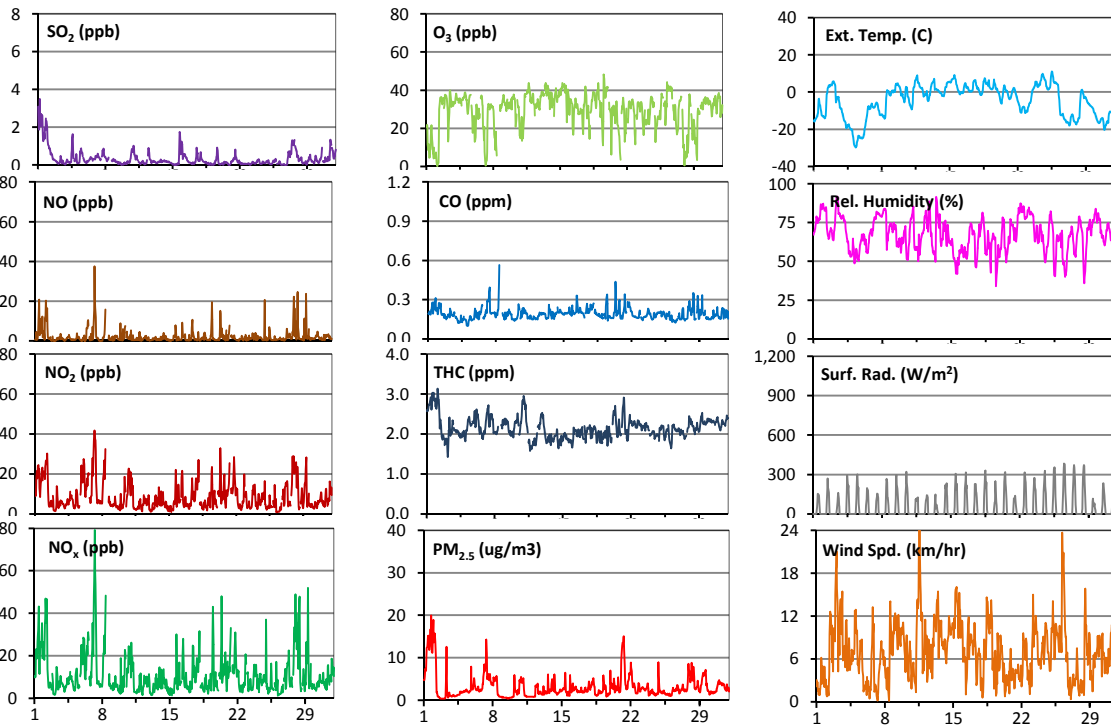
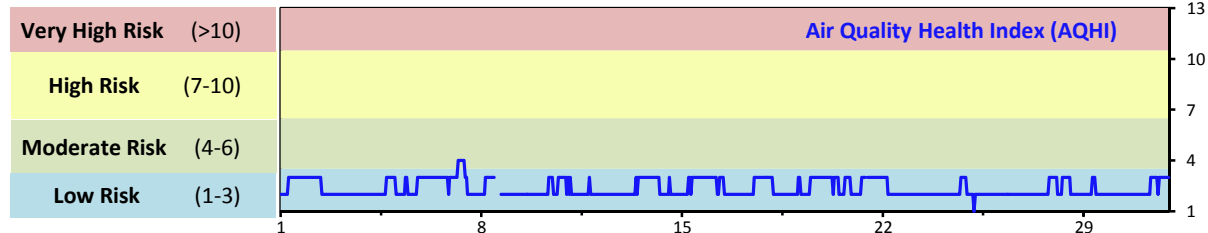


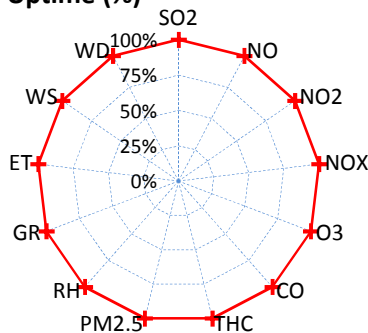
# Palliser Airshed Society - January 2014 Summary Report

## Continuous Sampling Results - Crescent Heights Station

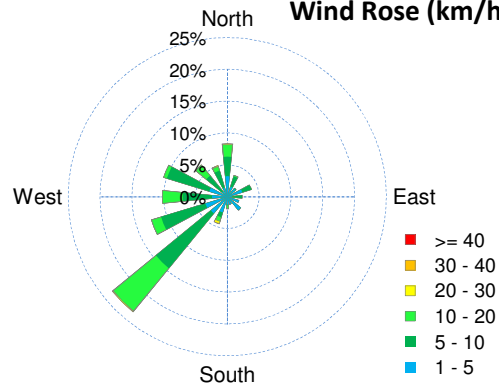
Pollutants	Month Records			24-Hour Records				1-Hour Records				
	Name	Conc Unit	Avg. Conc.	Uptime	Maximum		AAAQO Objective	Exceed No.	Maximum		AAAQO Objective	Exceed No.
					Conc	Time			Conc	Time		
SO <sub>2</sub>	ppb	0.3	100.0%	2.1	Jan-1	48	0	3.5	Jan-01 5:00	172	0	
NO	ppb	2.2	100.0%	6.5	Jan-28	-	-	37.5	Jan-07 6:00	-	-	
NO <sub>2</sub>	ppb	8.8	100.0%	17.8	Jan-1	-	-	41.8	Jan-07 6:00	159	0	
NO <sub>x</sub>	ppb	11	100.0%	23.2	Jan-7	-	-	79.2	Jan-07 6:00	-	-	
O <sub>3</sub>	ppb	29	100.0%	39	Jan-13	-	-	48	Jan-19 14:00	82	0	
CO	ppm	0.2	100.0%	0.2	Jan-21	-	-	0.6	Jan-08 9:00	13	0	
THC	ppm	2.1	100.0%	2.8	Jan-1	-	-	3.1	Jan-02 4:00	-	-	
PM <sub>2.5</sub>	µg/m <sup>3</sup>	3	100.0%	12	Jan-1	30	0	20	Jan-01 19:00	-	-	



Instrument Uptime (%)

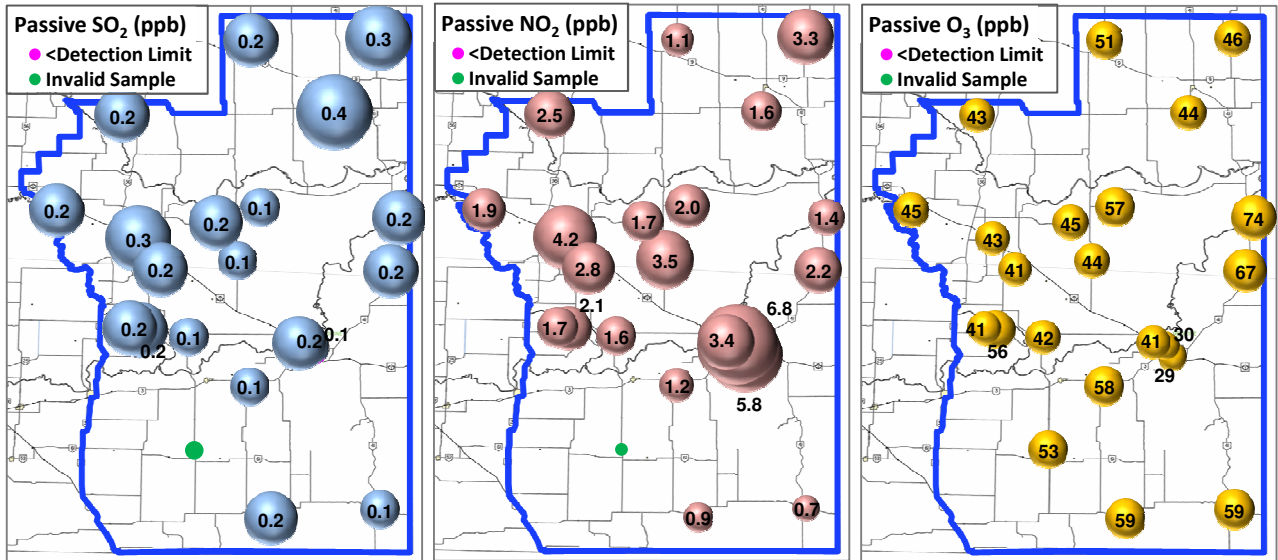


Wind Rose (km/hr)



# Palliser Airshed Society - January 2014 Summary Report

## Passive Sampling Results



## Monthly Update

- \* All data has been slope, intercept, and baseline corrected. Data may change after validation process.
- \* The measured ambient concentrations of all parameters are within the AAAQO for the month of January 2014.
- \* All compliance parameters are above 90% operational for the month of January 2014.
- \* There are no operational issues to report for the month of January 2014.