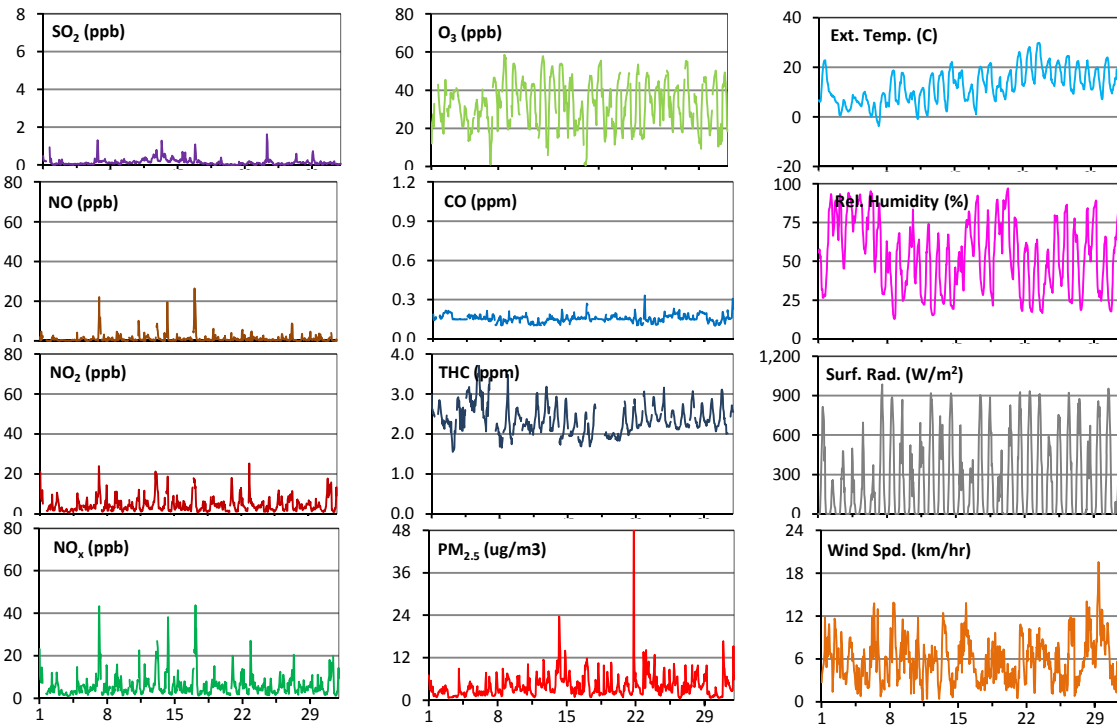
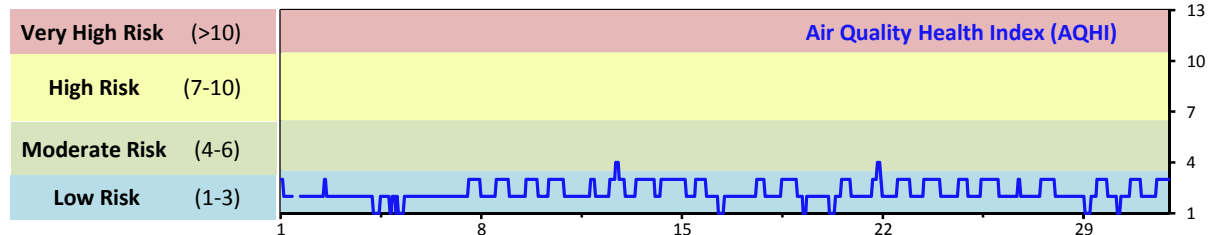


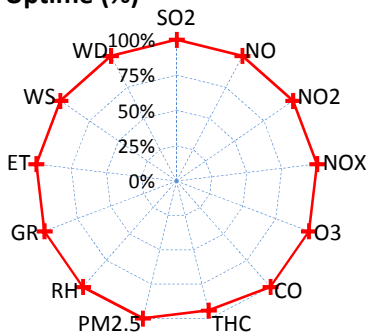
Palliser Airshed Society - May 2014 Summary Report

Continuous Sampling Results - Crescent Heights Station

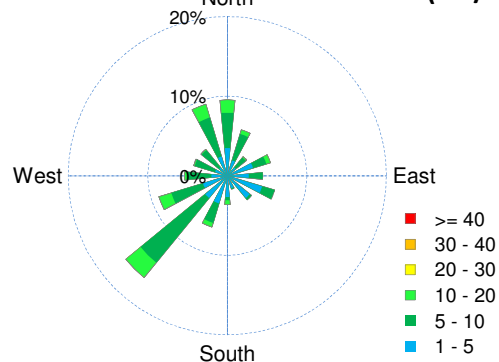
Pollutants	Month Records			24-Hour Records				1-Hour Records				
	Name	Conc Unit	Avg. Conc.	Uptime	Maximum		AAAQO Objective	Exceed No.	Maximum		AAAQO Objective	Exceed No.
					Conc	Time			Conc	Time		
SO ₂	ppb	0.1	100.0%	0.4	May-13	48	0	1.6	May-24 8:00	172	0	
NO	ppb	1.2	100.0%	4.0	May-17	-	-	26.5	May-17 4:00	-	-	
NO ₂	ppb	4.6	100.0%	7.7	May-7	-	-	25.4	May-22 21:00	159	0	
NO _x	ppb	5.9	100.0%	11	May-7	-	-	43.9	May-17 4:00	-	-	
O ₃	ppb	33	100.0%	42	May-8	-	-	59	May-08 16:00	82	0	
CO	ppm	0.2	100.0%	0.2	May-2	-	-	0.3	May-22 21:00	13	0	
THC	ppm	2.4	94.2%	3	May-5	-	-	3.7	May-05 22:00	-	-	
PM _{2.5}	µg/m ³	4	100.0%	10	May-14	30	0	67	May-21 20:00	-	-	



Instrument Uptime (%)

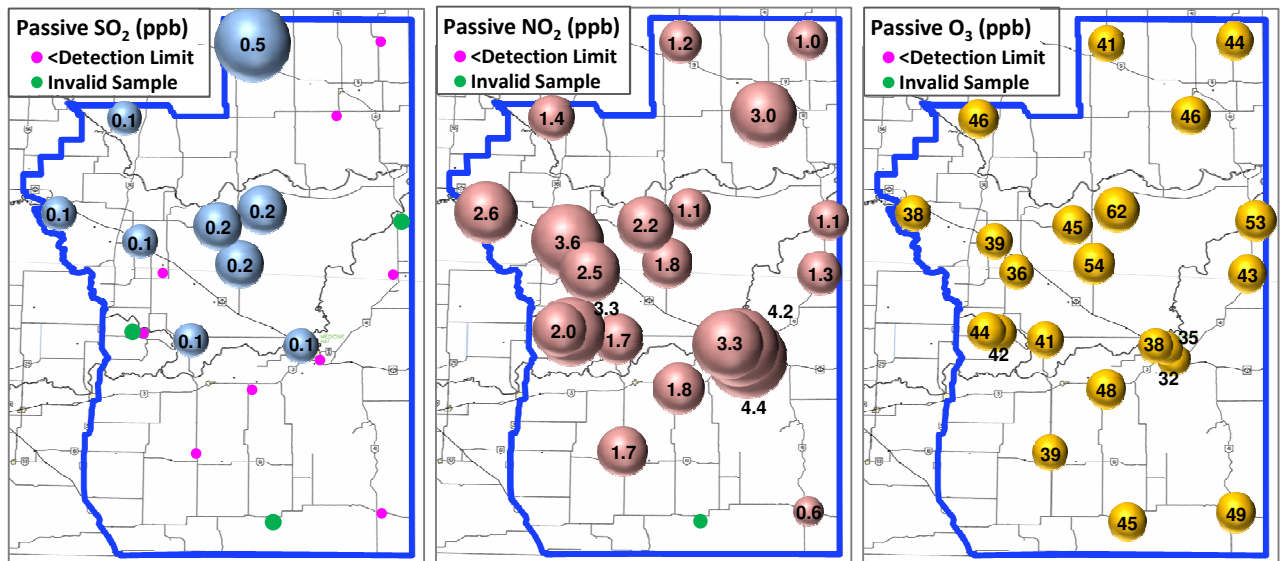


Wind Rose (km/hr)



Palliser Airshed Society - May 2014 Summary Report

Passive Sampling Results



Monthly Update

*All data has been slope, intercept, and baseline corrected. Data may change after validation process.

*The measured ambient concentrations of all parameters are within the AAAQO.

*All compliance parameters are above 90% operational.

*Operational issues include: 42 hours of THC data is flagged as "analyzer failure" throughout the month. The zero air generator continues to disrupt the THC analyzer, a new zero air generator is on order. Technicians continue to closely monitor this equipment.

*Passive sites 2 and 22 recorded high SO₂ values that are inconsistent with historical averages. These values were verified with the analytical lab, and have been flagged as "exceptional events".