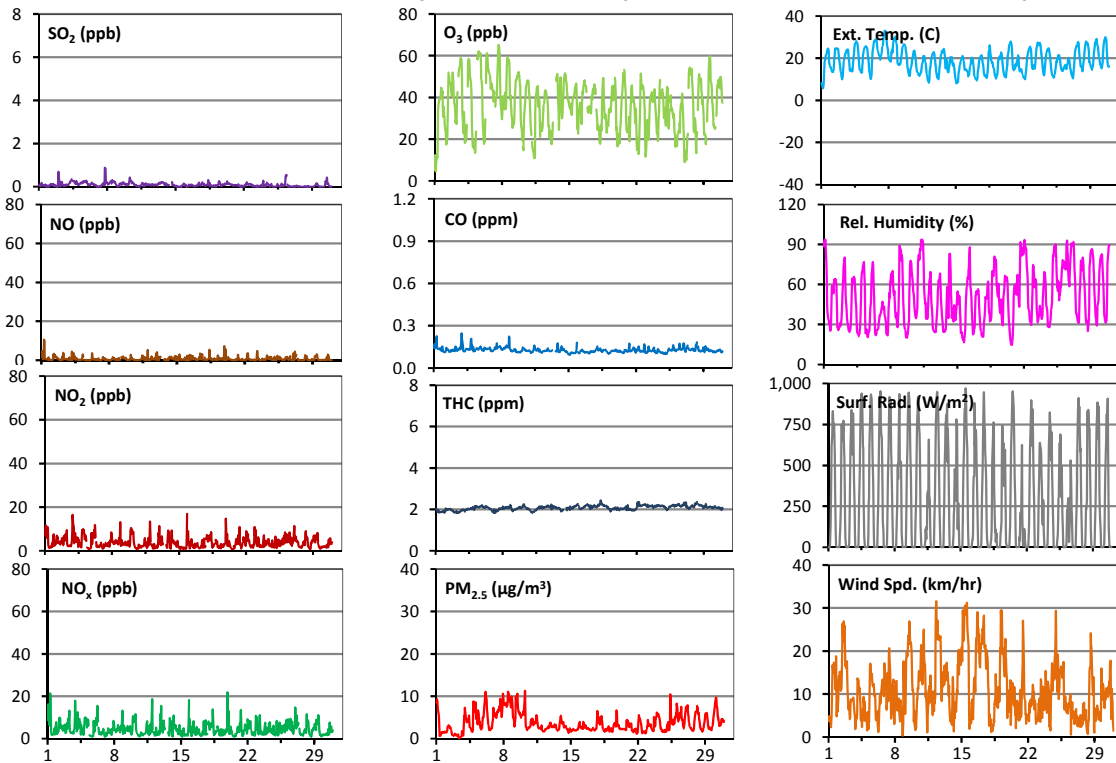
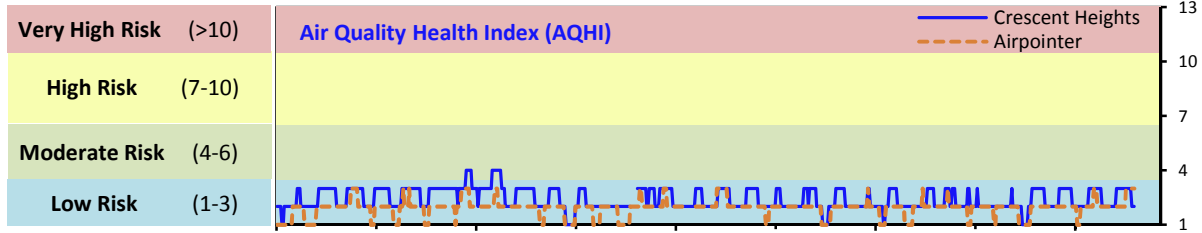


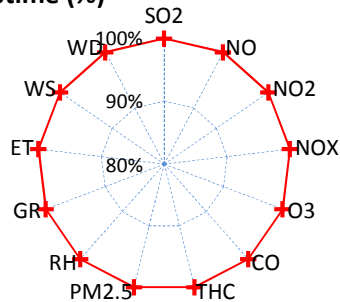
# Palliser Airshed Society - June 2016 Summary Report

## Continuous Sampling Results - Crescent Heights Station

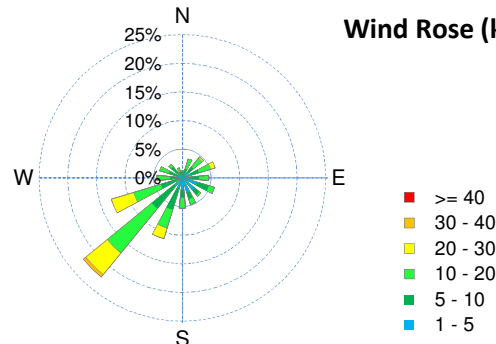
Pollutants	Month Records	24-Hour Records						1-Hour Records					
		Name	Conc Unit	Avg. Conc.	Uptime	Maximum		AAAQO Objective	Exceed No.	Maximum		AAAQO Objective	Exceed No.
						Conc	Time			Conc	Time		
SO <sub>2</sub>	ppb	< 1	99.9%	< 1	Jun-4	48	0	1	Jun-07 19:00	172	0		
NO	ppb	0.7	100.0%	1.7	Jun-1	-	-	10.6	Jun-01 7:00	-	-		
NO <sub>2</sub>	ppb	3.8	100.0%	5.5	Jun-3	-	-	17.0	Jun-15 21:00	159	0		
NO <sub>x</sub>	ppb	4.5	100.0%	6.7	Jun-1	-	-	21.9	Jun-19 22:00	-	-		
O <sub>3</sub>	ppb	36	100.0%	46	Jun-7	-	-	65	Jun-07 16:00	82	0		
CO	ppm	0.1	100.0%	0.1	Jun-8	-	-	0.2	Jun-03 22:00	13	0		
THC	ppm	2.1	100.0%	2.2	Jun-22	-	-	2.4	Jun-18 6:00	-	-		
PM <sub>2.5</sub>	µg/m <sup>3</sup>	4	100.0%	9	Jun-8	30	0	11	Jun-10 6:00	-	-		



Instrument Uptime (%)

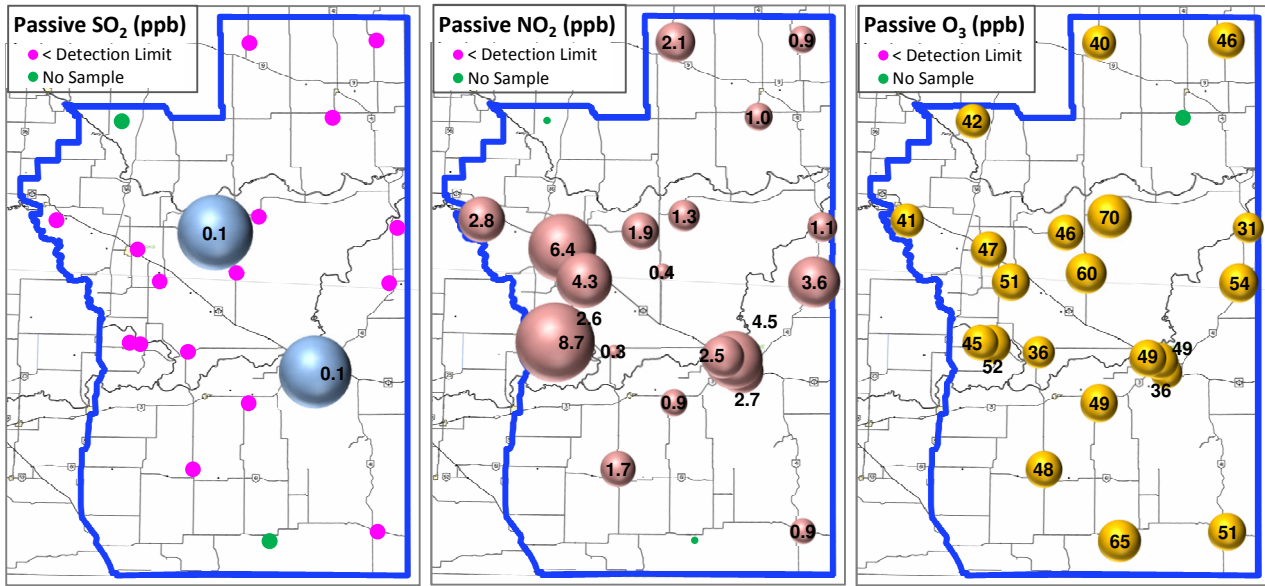


Wind Rose (km/hr)



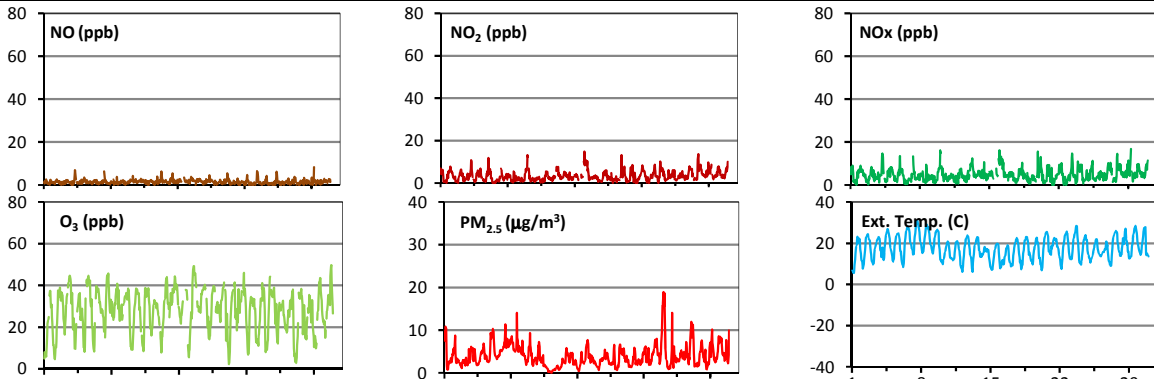
# Palliser Airshed Society - June 2016 Summary Report

## Passive Sampling Results

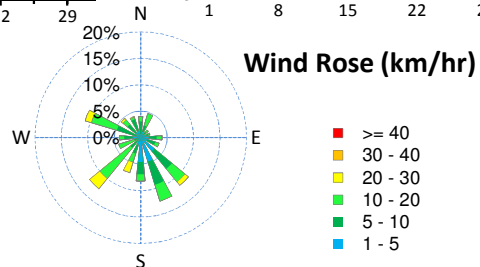
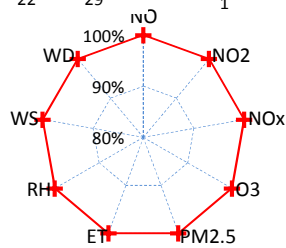


## Continuous Sampling Results - Brooks Station

Pollutants		Month Records		24-Hour Records				1-Hour Records			
Name	Conc Unit	Avg. Conc.	Uptime	Maximum		AAAQO Objective	Exceed No.	Maximum		AAAQO Objective	Exceed No.
				Conc	Time			Conc	Time		
NO	ppb	1.5	100.0%	2.1	Jun-13	-	-	8.3	Jun-29 7:00	-	-
NO <sub>2</sub>	ppb	3.3	100.0%	5.5	Jun-16	-	-	14.8	Jun-16 1:00	159	0
NOx	ppb	4.8	100.0%	7.3	Jun-16	-	-	16.8	Jun-29 7:00	-	-
O <sub>3</sub>	ppb	28	100.0%	36	Jun-14	-	-	50	Jun-30 20:00	82	0
PM <sub>2.5</sub>	ug/m3	4	100.0%	7	Jun-7	30	0	19	Jun-24 2:00	-	-



Uptime (%)



## Monthly Update

\*All data has been slope, intercept, and baseline corrected. Data may change after validation process.

\*The measured ambient concentrations of all parameters are within the AAAQO.

\*All compliance parameters are above 90% operational. There are no operational issues to report.