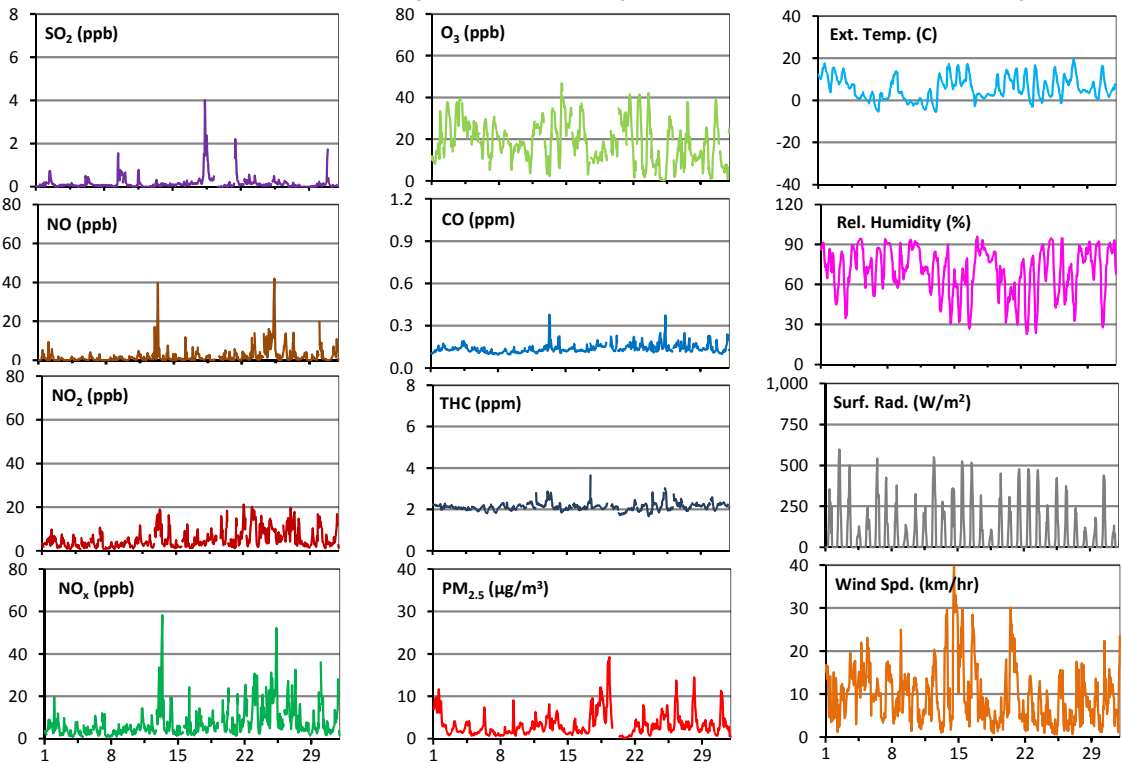
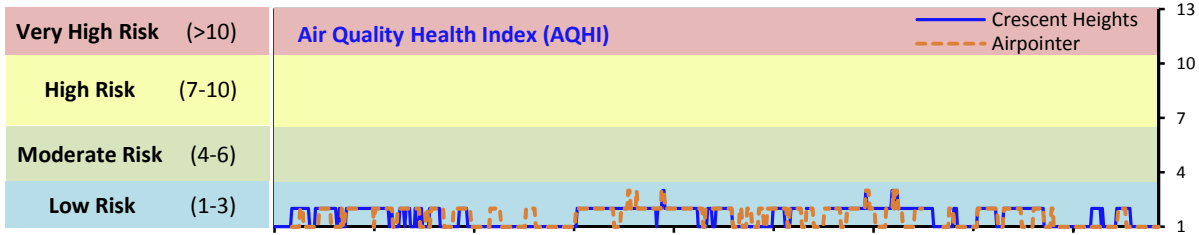


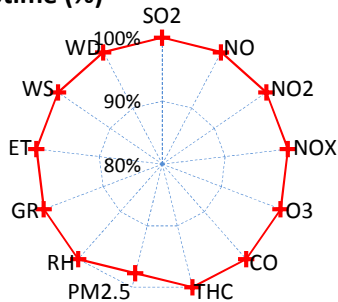
# Palliser Airshed Society - October 2016 Summary Report

## Continuous Sampling Results - Crescent Heights Station

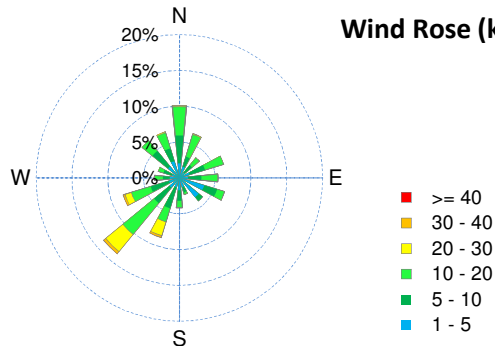
Pollutants	Month Records			24-Hour Records				1-Hour Records				
	Name	Conc Unit	Avg. Conc.	Uptime	Maximum		AAAQO	Exceed No.	Maximum		AAAQO	Exceed No.
					Conc	Time	Objective		Conc	Time	Objective	
SO <sub>2</sub>	ppb	< 1	100.0%	1	Oct-18	48	0	4	Oct-18 8:00	172	0	
NO	ppb	2.0	100.0%	9.2	Oct-25	-	-	41.9	Oct-25 9:00	-	-	
NO <sub>2</sub>	ppb	5.2	100.0%	10.6	Oct-22	-	-	21.2	Oct-22 2:00	159	0	
NO <sub>x</sub>	ppb	7.4	100.0%	16.4	Oct-25	-	-	58.3	Oct-13 9:00	-	-	
O <sub>3</sub>	ppb	19	100.0%	29	Oct-21	-	-	47	Oct-14 13:00	82	0	
CO	ppm	0.1	100.0%	0.2	Oct-13	-	-	0.4	Oct-13 8:00	13	0	
THC	ppm	2.1	100.0%	2.3	Oct-13	-	-	3.6	Oct-17 12:00	-	-	
PM <sub>2.5</sub>	µg/m <sup>3</sup>	3	97.7%	8	Oct-18	30	0	19	Oct-19 9:00	80	0	



**Instrument Uptime (%)**

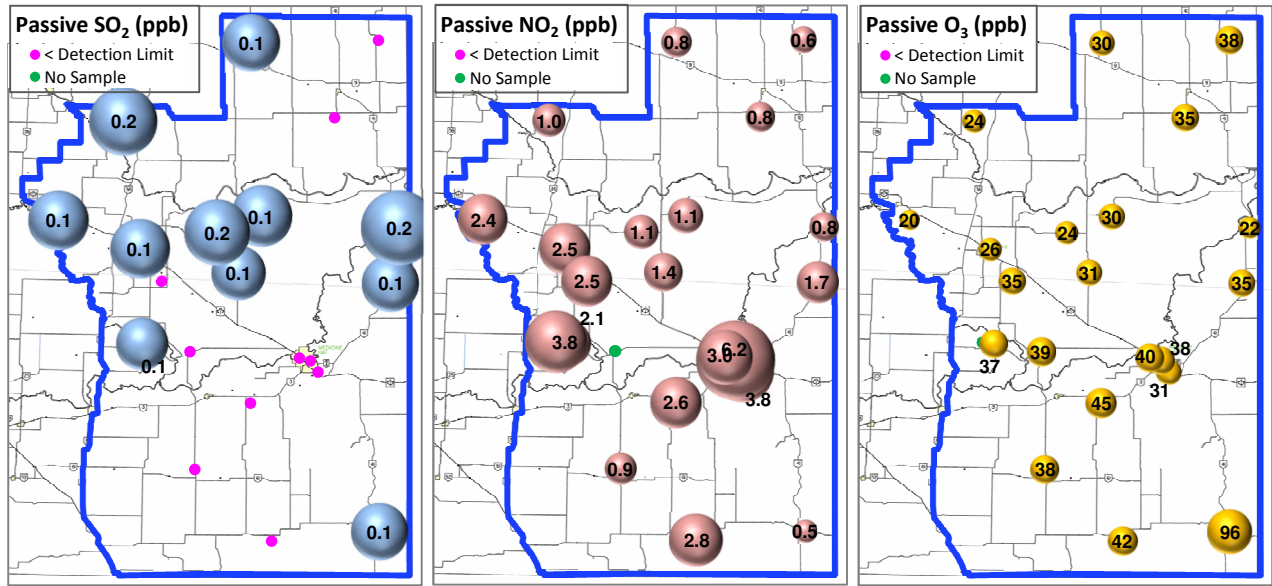


**Wind Rose (km/hr)**



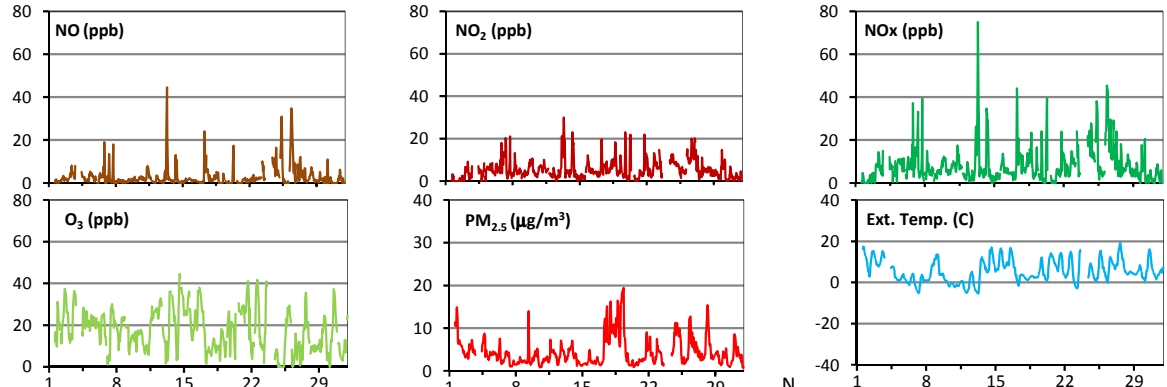
# Palliser Airshed Society - October 2016 Summary Report

## Passive Sampling Results

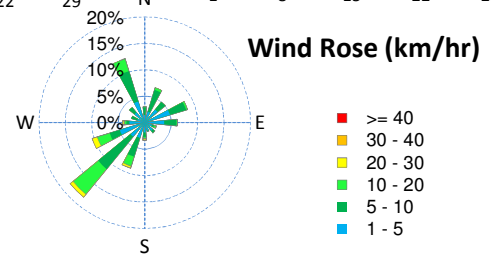
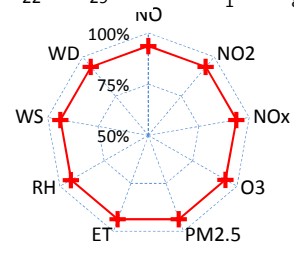


## Continuous Sampling Results - Medicine Hat Airport Station

Pollutants		Month Records		24-Hour Records				1-Hour Records			
Name	Conc Unit	Avg. Conc.	Uptime	Maximum		AAAQO Objective	Exceed No.	Maximum		AAAQO Objective	Exceed No.
				Conc	Time			Conc	Time		
NO	ppb	2.8	93.7%	10.3	Oct-26	-	-	44.6	Oct-13 9:00	-	-
NO <sub>2</sub>	ppb	5.3	93.7%	11.0	Oct-26	-	-	30.0	Oct-13 9:00	159	0
NO <sub>x</sub>	ppb	8.1	93.7%	21.5	Oct-26	-	-	75.0	Oct-13 9:00	-	-
O <sub>3</sub>	ppb	18	93.5%	28	Oct-16	-	-	45	Oct-14 14:00	82	0
PM <sub>2.5</sub>	ug/m3	4	93.7%	10	Oct-18	30	0	19	Oct-19 9:00	80	0



Uptime (%)



## Monthly Update

- \*All data has been slope, intercept, and baseline corrected. Data may change after validation process.
- \*The measured ambient concentrations of all parameters are within the AAAQO.
- \*All compliance parameters are >90% operational. The MH Airport station experienced power issues, causing power disruptions to the airpointer. The PM2.5 analyzer at Crescent Heights was malfunctioning on Oct 19-20 due to analyzer issues.