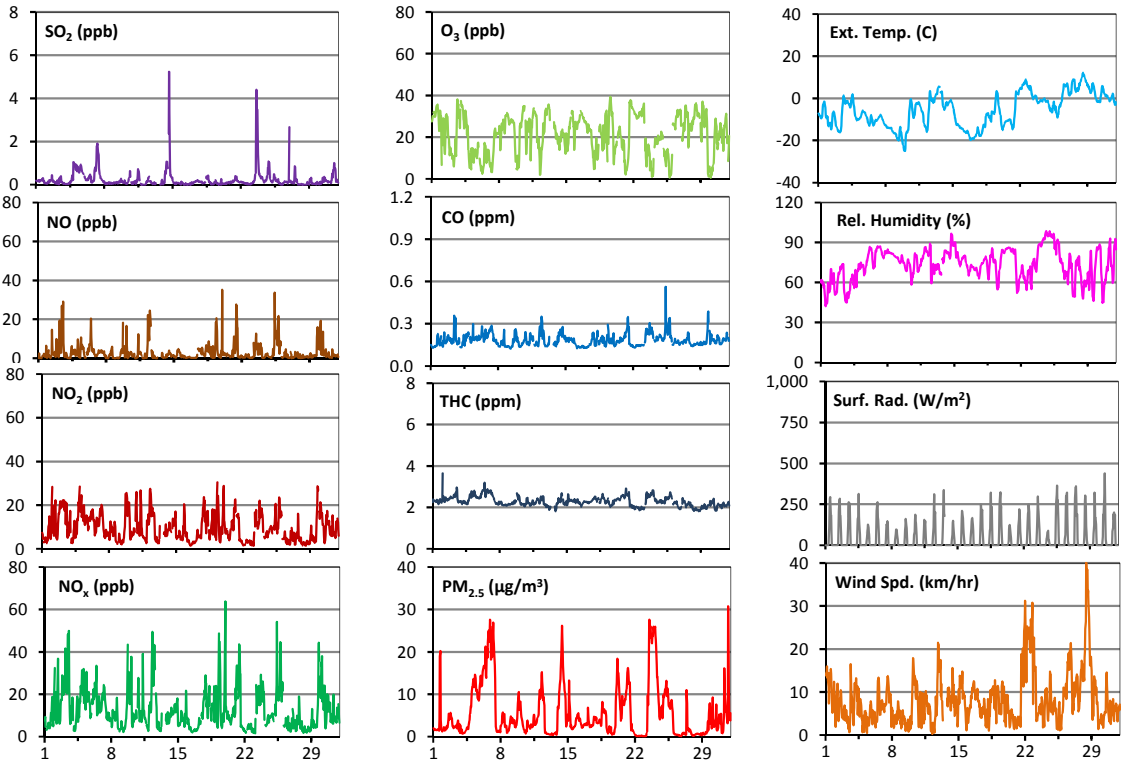
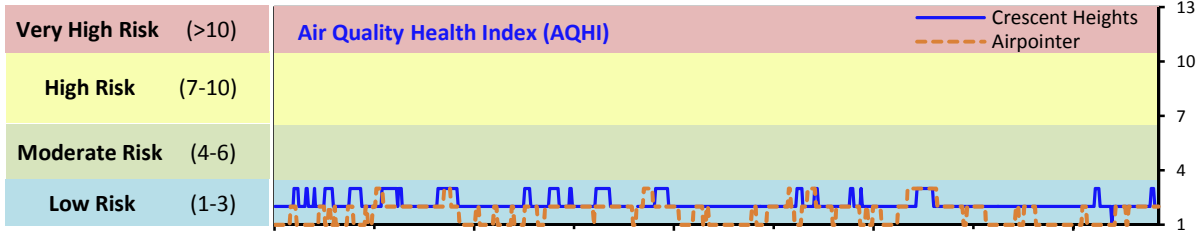


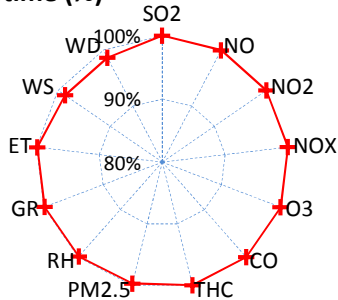
Palliser Airshed Society - January 2016 Summary Report

Continuous Sampling Results - Crescent Heights Station

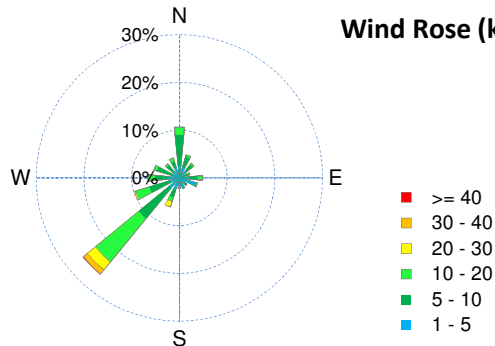
Pollutants	Month Records			24-Hour Records				1-Hour Records				
	Name	Conc Unit	Avg. Conc.	Uptime	Maximum		AAAQO	Exceed	Maximum		AAAQO	Exceed
					Conc	Time	Objective	No.	Conc	Time	Objective	No.
SO ₂	ppb	< 1	100.0%	1	Jan-23	48	0	5	Jan-14 16:00	172	0	
NO	ppb	3.0	100.0%	9.4	Jan-25	-	-	35.2	Jan-20 0:00	-	-	
NO ₂	ppb	9.5	100.0%	15.3	Jan-3	-	-	30.5	Jan-19 8:00	159	0	
NO _x	ppb	12.5	100.0%	22.6	Jan-25	-	-	63.8	Jan-20 0:00	-	-	
O ₃	ppb	21	100.0%	31	Jan-22	-	-	39	Jan-19 15:00	82	0	
CO	ppm	0.2	100.0%	0.3	Jan-25	-	-	0.6	Jan-25 10:00	13	0	
THC	ppm	2.3	100.0%	2.8	Jan-6	-	-	3.6	Jan-02 2:00	-	-	
PM _{2.5}	µg/m ³	6	99.7%	19	Jan-6	30	0	31	Jan-31 18:00	-	-	



Instrument Uptime (%)

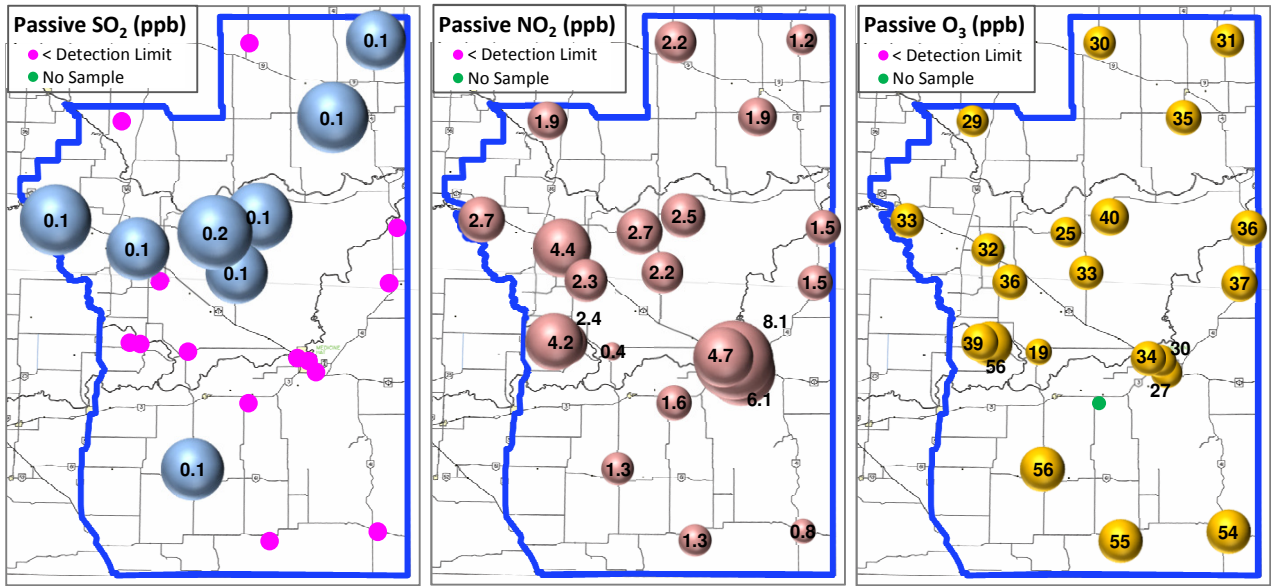


Wind Rose (km/hr)



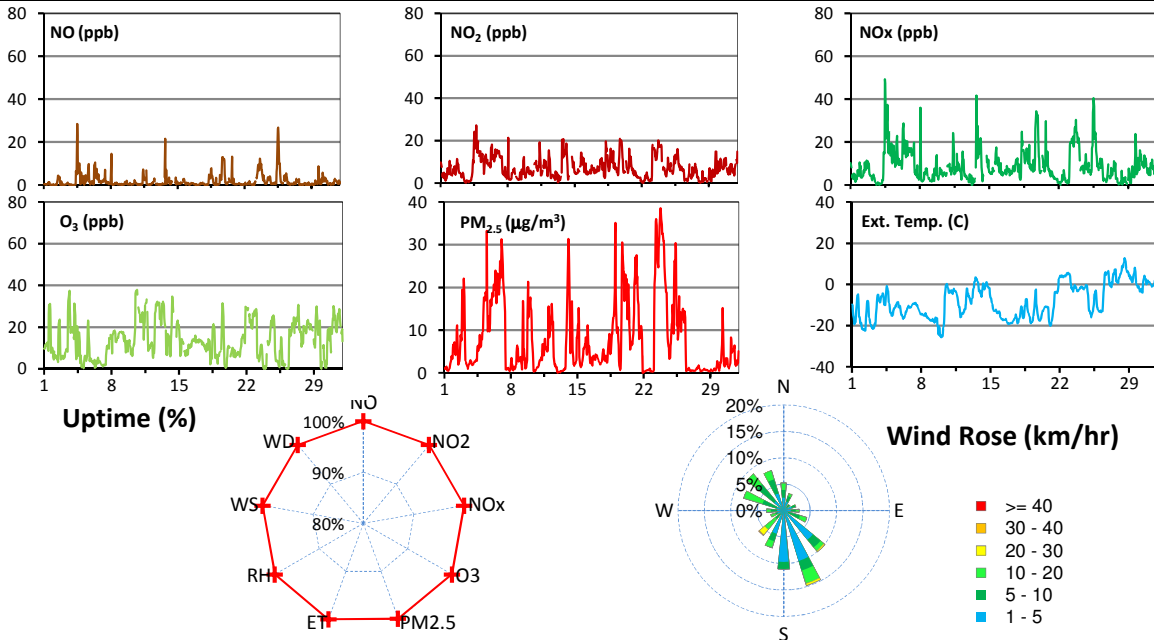
Palliser Airshed Society - January 2016 Summary Report

Passive Sampling Results



Continuous Sampling Results - Brooks Station

Pollutants		Month Records		24-Hour Records				1-Hour Records			
Name	Conc Unit	Avg. Conc.	Uptime	Maximum		AAAQO Objective	Exceed No.	Maximum		AAAQO Objective	Exceed No.
				Conc	Time			Conc	Time		
NO	ppb	1.9	100.0%	6.9	Jan-25	-	-	28.5	Jan-04 12:00	-	-
NO ₂	ppb	7.0	100.0%	14.4	Jan-23	-	-	27.2	Jan-04 18:00	159	0
NO _x	ppb	8.9	100.0%	20.5	Jan-23	-	-	49.3	Jan-04 12:00	-	-
O ₃	ppb	14	100.0%	25	Jan-22	-	-	38	Jan-10 16:00	82	0
PM _{2.5}	ug/m3	8	99.9%	28	Jan-23	30	0	39	Jan-23 19:00	-	-



Monthly Update

- *All data has been slope, intercept, and baseline corrected. Data may change after validation process.
- *The measured ambient concentrations of all parameters are within the AAAQO.
- *All compliance parameters are above 90% operational. 10 hours of WS/WD data at Crescent Heights is flagged as "maintenance" on January 13. The instrument was swapped out for retrofitting, and a programming issue caused this extended period of maintenance.