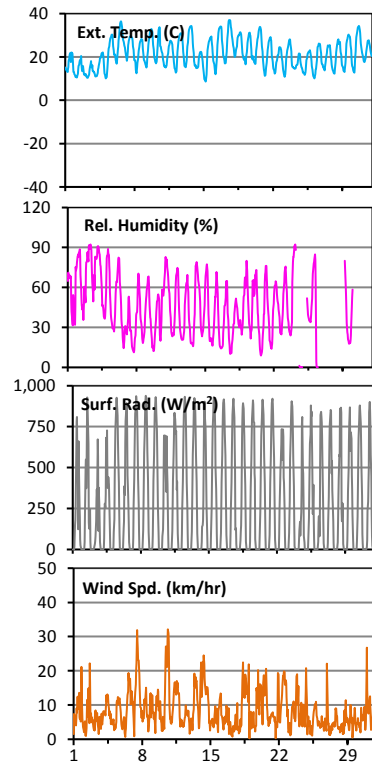
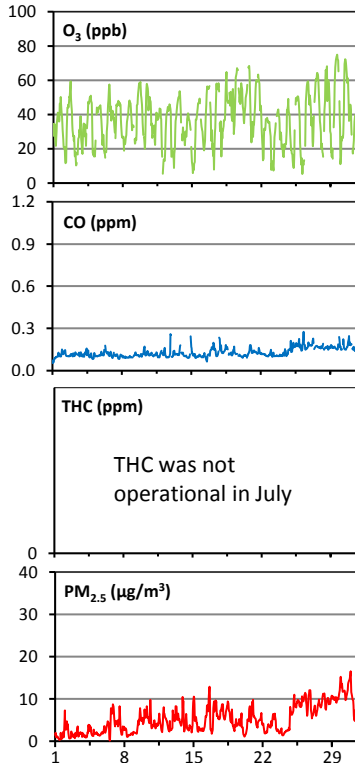
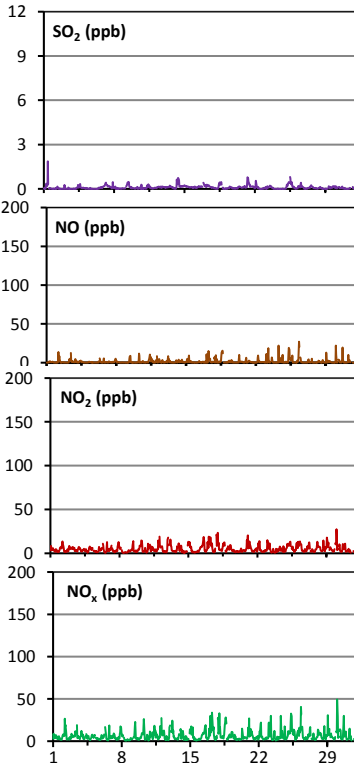
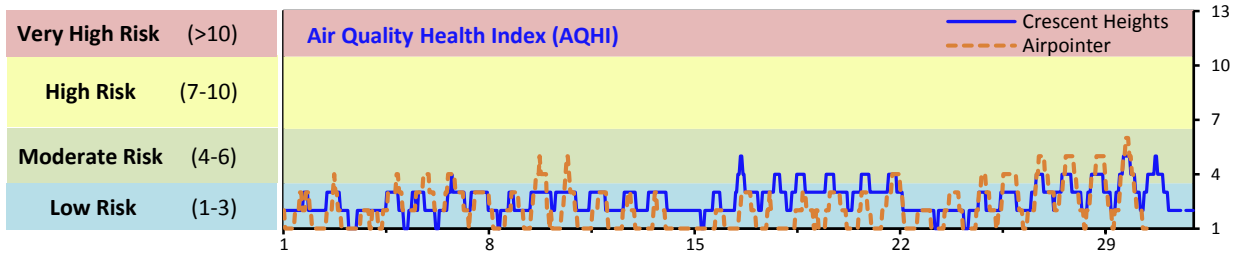


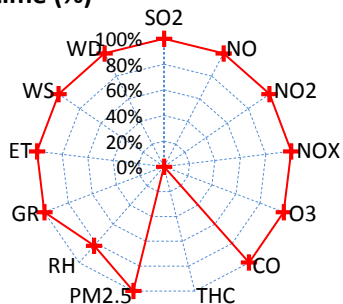
Palliser Airshed Society - July 2018 Summary Report

Continuous Sampling Results - Crescent Heights Station

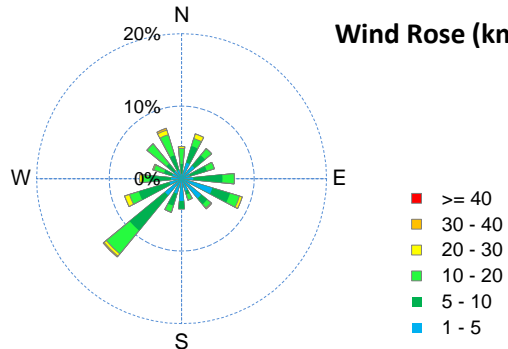
Pollutants	Month Records			24-Hour Records				1-Hour Records				
	Name	Conc Unit	Avg. Conc.	Uptime	Maximum		AAAQO Objective	Exceed No.	Maximum		AAAQO Objective	Exceed No.
					Conc	Time			Conc	Time		
SO ₂	ppb	< 1	100.0%	< 1	Jul-25	48	0	2	Jul-01 10:00	172	0	
NO	ppb	1.6	100.0%	3.7	Jul-25	-	-	27.0	Jul-26 8:00	-	-	
NO ₂	ppb	5.1	100.0%	9.9	Jul-17	-	-	27.5	Jul-30 1:00	159	0	
NO _x	ppb	6.7	100.0%	13.6	Jul-17	-	-	49.3	Jul-30 1:00	-	-	
O ₃	ppb	37	100.0%	51	Jul-19	-	-	75	Jul-29 17:00	82	0	
CO	ppm	0.1	100.0%	0.2	Jul-30	-	-	0.3	Jul-26 8:00	13	0	
THC	ppm	-	-	-	-	-	-	-	-	-	-	
PM _{2.5}	µg/m ³	5	100.0%	13	Jul-30	30	0	17	Jul-30 22:00	80	0	



Instrument Uptime (%)

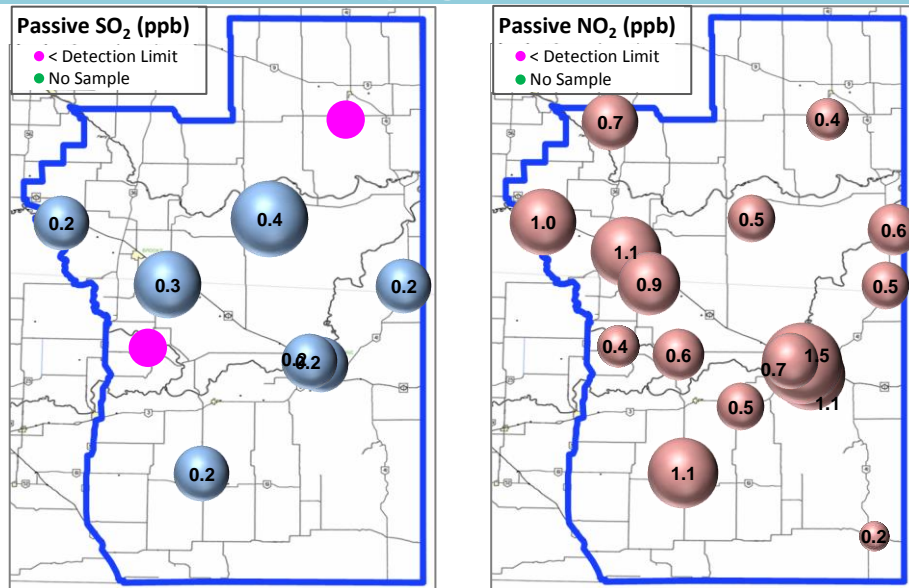


Wind Rose (km/hr)



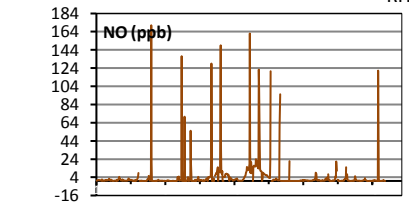
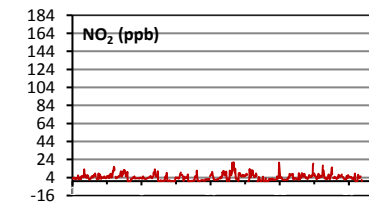
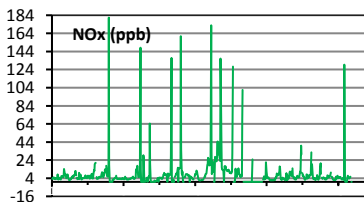
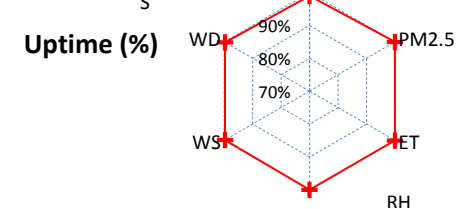
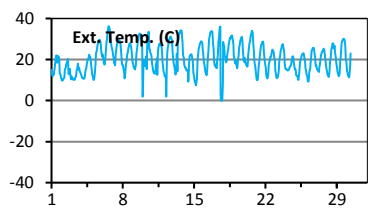
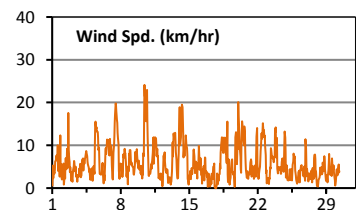
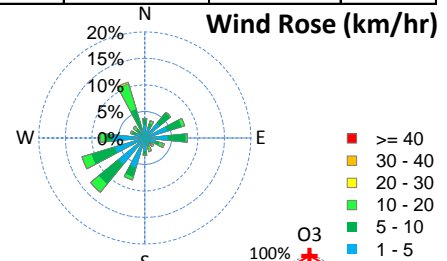
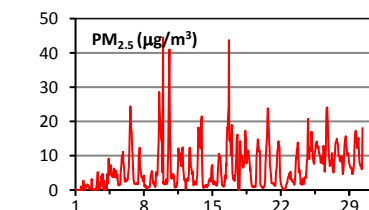
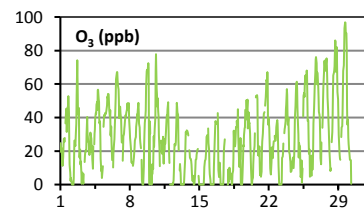
Palliser Airshed Society - July 2018 Summary Report

Passive Sampling Results



Continuous Sampling Results - Medicine Hat Airport Station

Pollutants	Conc Unit	Month Records		24-Hour Records				1-Hour Records			
		Avg. Conc.	Uptime	Maximum Conc	Time	AAAQO Objective	Exceed No.	Maximum Conc	Time	AAAQO Objective	Exceed No.
NO	ppb	4.5	99.9%	23.1	Jul-17	-	-	171.1	Jul-06 14:00	-	-
NO ₂	ppb	4.2	99.9%	8.9	Jul-17	-	-	22.3	Jul-10 0:00	159	0
NO _x	ppb	8.7	99.9%	32	Jul-17	-	-	181.4	Jul-06 14:00	-	-
O ₃	ppb	28	99.0%	53	Jul-29	-	-	97	Jul-29 17:00	82	8
PM _{2.5}	ug/m3	6	100.0%	12	Jul-26	30	0	45	Jul-09 23:00	80	0



Monthly Update

*All data has been validated; data may change after validation process.

*The measured ambient concentrations of all parameters are within the AAAQO.

*All compliance parameters are greater than 90% operational, with the exception of the THC analyzer which was not operational during the month of July and the Relative Humidity at the Crescent Heights Station.