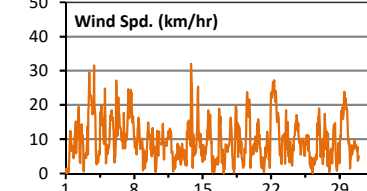
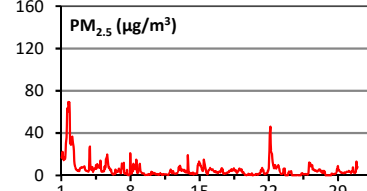
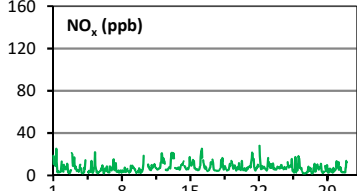
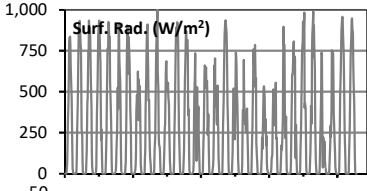
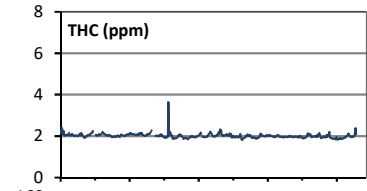
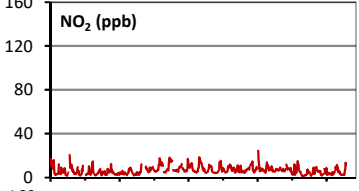
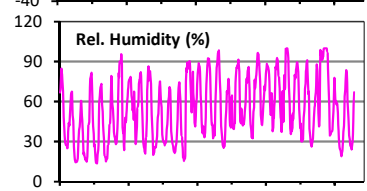
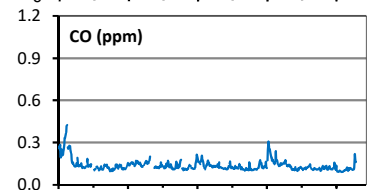
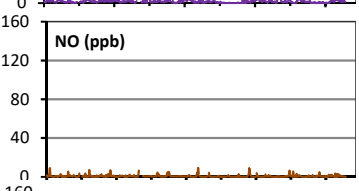
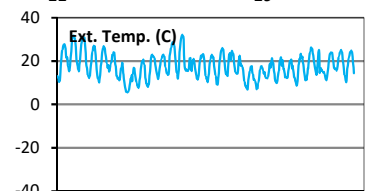
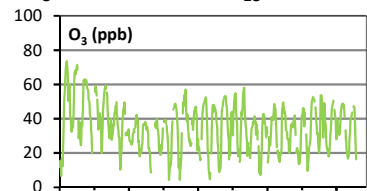
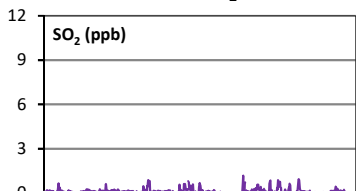
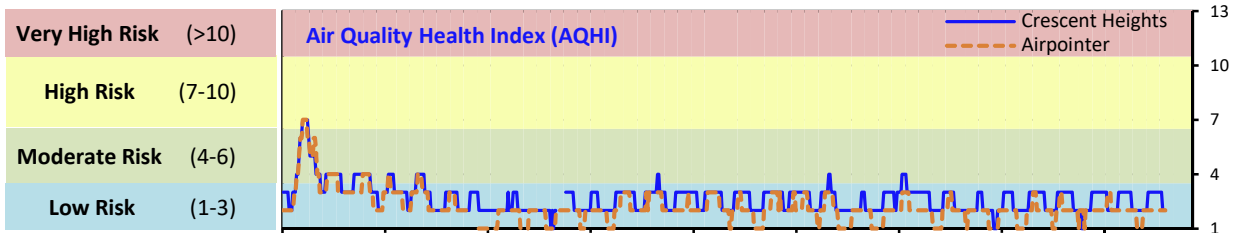


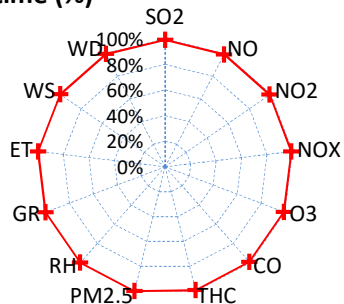
# Palliser Airshed Society - June 2019 Summary Report

## Continuous Sampling Results - Crescent Heights Station

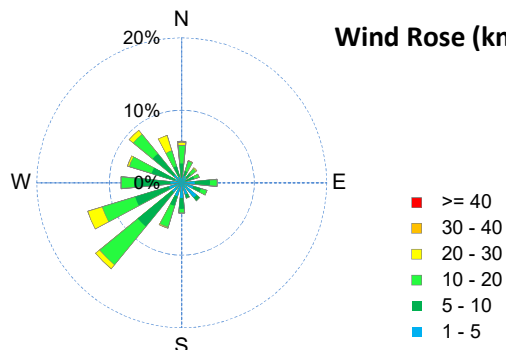
Pollutants		Month Records		24-Hour Records				1-Hour Records			
Name	Conc Unit	Avg. Conc.	Uptime	Maximum		AAAQO Objective	Exceed No.	Maximum		AAAQO Objective	Exceed No.
				Conc	Time			Conc	Time		
SO <sub>2</sub>	ppb	< 1	99.2%	< 1	Jun-15	48	0	1	Jun-20 20:00	172	0
NO	ppb	0.7	99.2%	1.4	Jun-21	-	-	9.3	Jun-16 5:00	-	-
NO <sub>2</sub>	ppb	6.5	99.2%	9.9	Jun-13	-	-	24.5	Jun-22 2:00	159	0
NO <sub>x</sub>	ppb	7.2	99.2%	11.1	Jun-13	-	-	28.1	Jun-22 2:00	-	-
O <sub>3</sub>	ppb	35	99.2%	50	Jun-2	-	-	74	Jun-01 18:00	76	0
CO	ppm	0.1	99.2%	0.3	Jun-1	-	-	0.4	Jun-01 21:00	13	0
THC	ppm	2.0	99.2%	2.1	Jun-1	-	-	3.6	Jun-11 23:00	-	-
PM <sub>2.5</sub>	µg/m <sup>3</sup>	5	100.0%	35	Jun-1	29	1	70	Jun-01 18:00	80	0



Instrument Uptime (%)

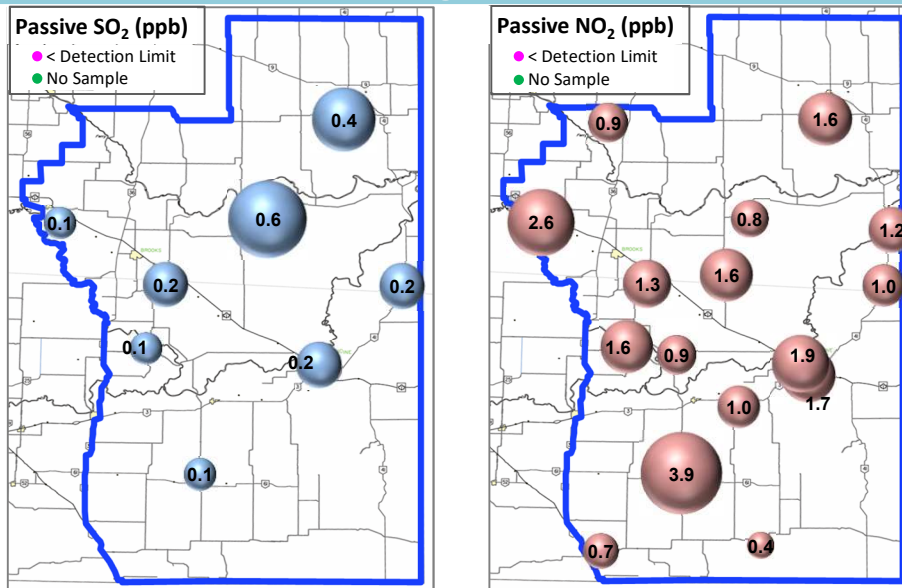


Wind Rose (km/hr)



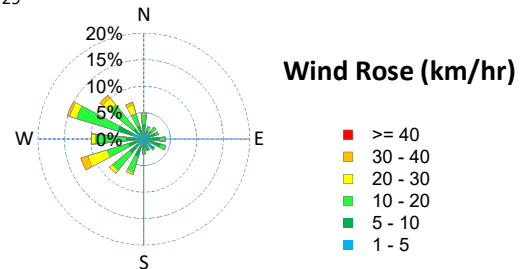
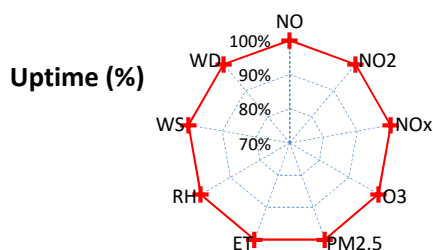
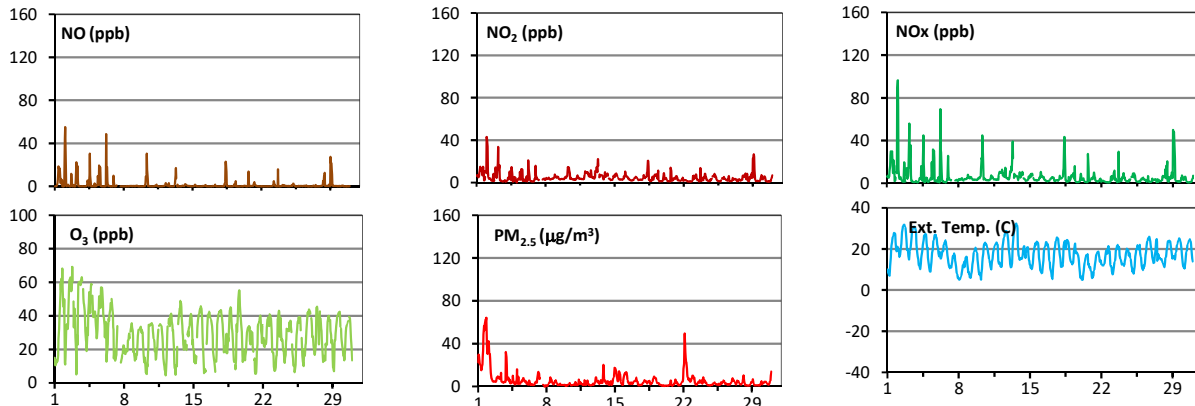
# Palliser Airshed Society - June 2019 Summary Report

## Passive Sampling Results



## Continuous Sampling Results - Medicine Hat Trap Club

Pollutants	Conc Unit	Month Records		24-Hour Records				1-Hour Records			
		Avg. Conc.	Uptime	Maximum		AAAQO Objective	Exceed No.	Maximum		AAAQO Objective	Exceed No.
				Conc	Time			Conc	Time		
NO	ppb	1.7	99.9%	7.2	Jun-2	-	-	55.1	Jun-02 2:00	-	-
NO <sub>2</sub>	ppb	4.7	99.9%	9.2	Jun-2	-	-	43.1	Jun-02 1:00	159	0
NO <sub>x</sub>	ppb	6.3	99.9%	16.4	Jun-2	-	-	96.6	Jun-02 2:00	-	-
O <sub>3</sub>	ppb	30	99.9%	46	Jun-3	-	-	69	Jun-02 19:00	76	0
PM <sub>2.5</sub>	ug/m <sup>3</sup>	6	100.0%	36	Jun-1	29	1	64	Jun-01 21:00	80	0



## Monthly Update

\*All data has been validated; data may change after validation process.

\*The measured ambient concentrations of all parameters are within the AAAQO with the exception of one 24-hour PM<sub>2.5</sub> exceedances recorded at Crescent Heights.

\*All compliance parameters are > 90% operational.