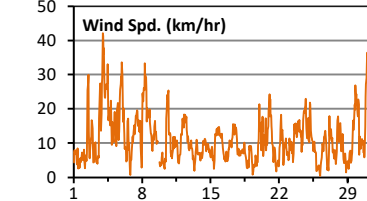
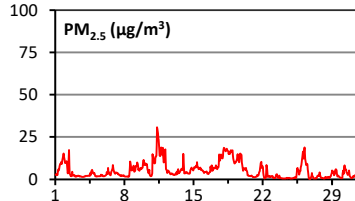
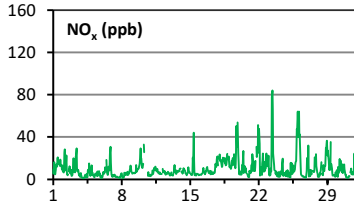
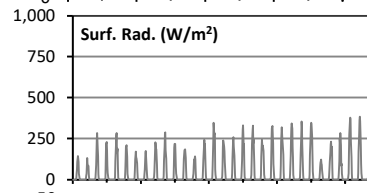
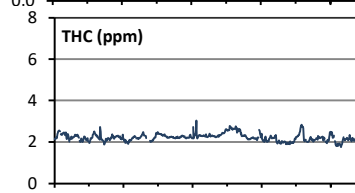
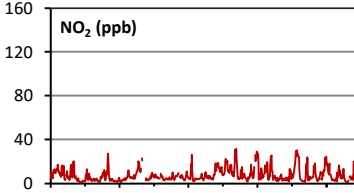
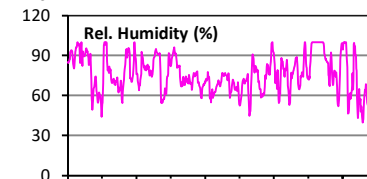
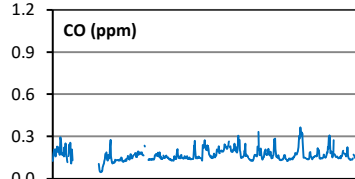
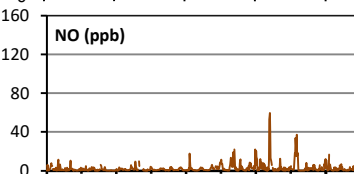
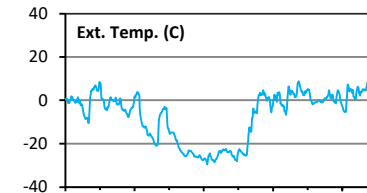
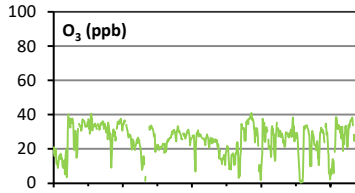
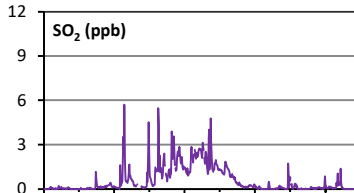
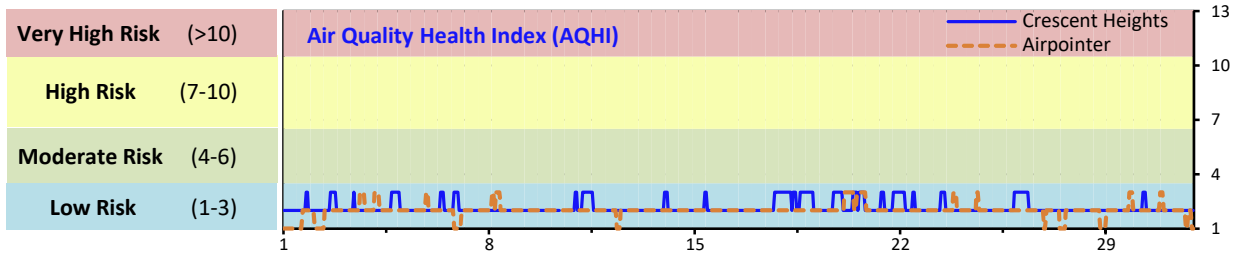


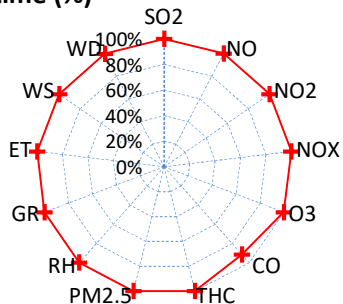
# Palliser Airshed Society - January 2020 Summary Report

## Continuous Sampling Results - Crescent Heights Station

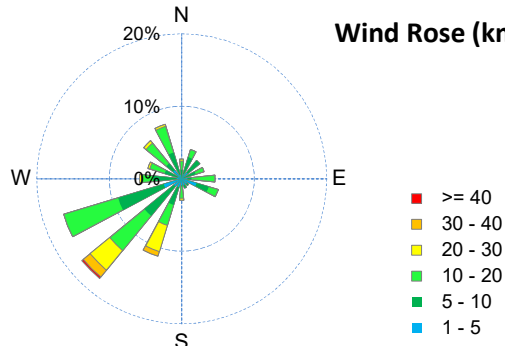
Pollutants	Month Records			24-Hour Records				1-Hour Records				
	Name	Conc Unit	Avg. Conc.	Uptime	Maximum		AAAQO Objective	Exceed No.	Maximum		AAAQO Objective	Exceed No.
					Conc	Time			Conc	Time		
SO <sub>2</sub>	ppb	1	100.0%	2	Jan-16	48	0	6	Jan-09 1:00	172	0	
NO	ppb	2.5	100.0%	9.5	Jan-23	-	-	59.6	Jan-23 10:00	-	-	
NO <sub>2</sub>	ppb	7.5	100.0%	14.2	Jan-19	-	-	31.7	Jan-19 21:00	159	0	
NO <sub>x</sub>	ppb	10.0	100.0%	19.3	Jan-19	-	-	84.1	Jan-23 10:00	-	-	
O <sub>3</sub>	ppb	25	100.0%	35	Jan-4	-	-	41	Jan-21 1:00	76	0	
CO	ppm	0.2	91.5%	0.2	Jan-18	-	-	0.4	Jan-26 0:00	13	0	
THC	ppm	2.2	100.0%	2.6	Jan-19	-	-	3.0	Jan-15 10:00	-	-	
PM <sub>2.5</sub>	µg/m <sup>3</sup>	5	100.0%	17	Jan-11	29	0	31	Jan-11 8:00	80	0	



Instrument Uptime (%)

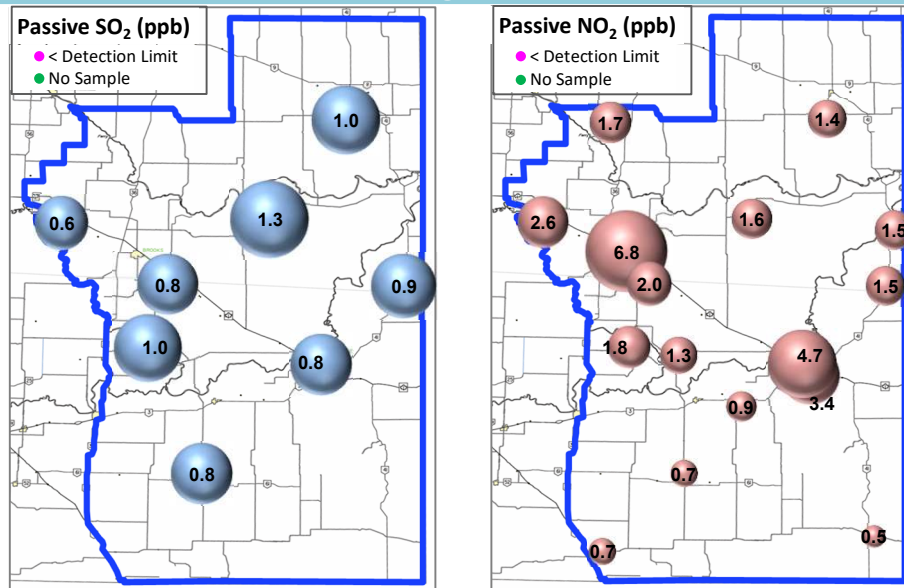


Wind Rose (km/hr)



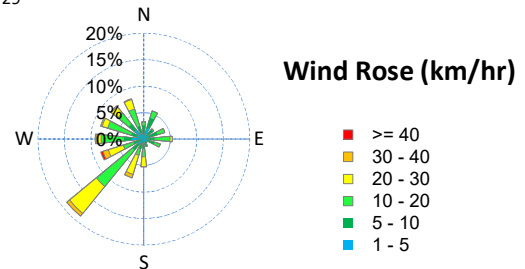
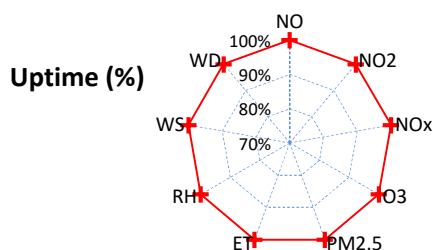
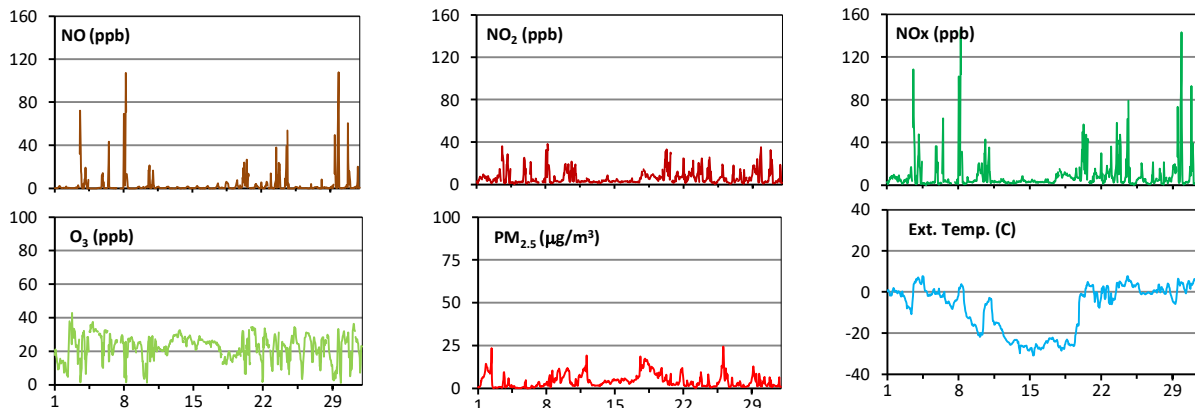
# Palliser Airshed Society - January 2020 Summary Report

## Passive Sampling Results



## Continuous Sampling Results - Medicine Hat Trap Club

Pollutants	Conc Unit	Month Records		24-Hour Records				1-Hour Records			
		Avg. Conc.	Uptime	Maximum		AAAQO Objective	Exceed No.	Maximum		AAAQO Objective	Exceed No.
				Conc	Time			Conc	Time		
NO	ppb	2.9	100.0%	15.4	Jan-29	-	-	108.1	Jan-29 21:00	-	-
NO <sub>2</sub>	ppb	6.3	100.0%	14.5	Jan-20	-	-	38.2	Jan-08 6:00	159	0
NO <sub>x</sub>	ppb	9.2	100.0%	29.3	Jan-29	-	-	145.5	Jan-08 6:00	-	-
O <sub>3</sub>	ppb	22	100.0%	30	Jan-13	-	-	43	Jan-02 19:00	76	0
PM <sub>2.5</sub>	ug/m <sup>3</sup>	4	100.0%	14	Jan-18	29	0	25	Jan-26 3:00	80	0



## Monthly Update

\*All data has been validated; data may change after validation process.

\*The measured ambient concentrations of all parameters are within the AAAQO.

\*All compliance parameters had > 90% operational uptime.